

E. L. GRANT  
T-3354

"FROM"

NE 1/4 SE 1/4 SEC 9 T.15 S. R.13 E.W.M.

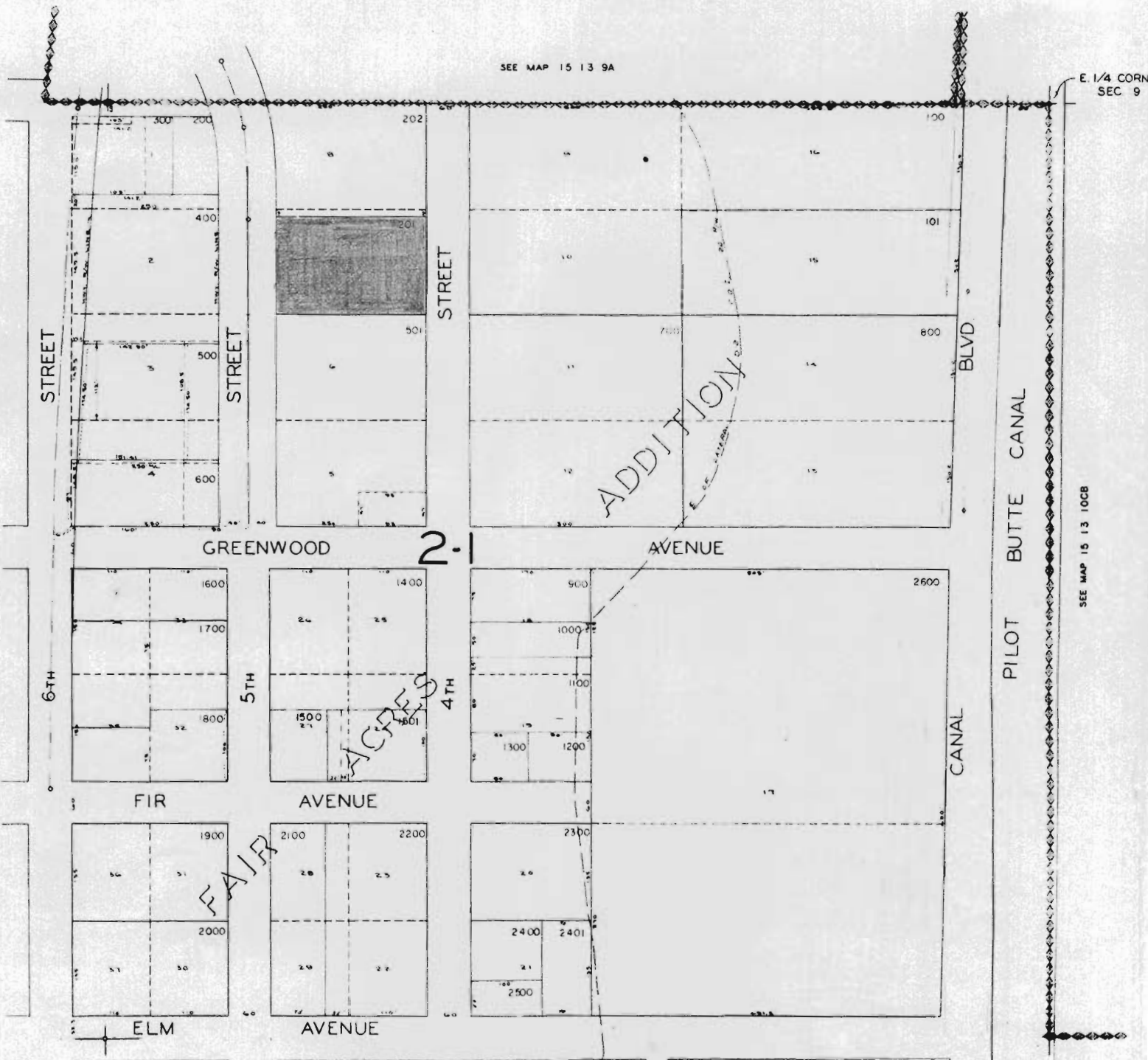
15 13 9DA

DESCHUTES COUNTY

SCALE: 1" = 100'

SEE MAP 15 13 9A

E. 1/4 CORN  
SEC 9



SEE MAP 15 13 90B

SEE MAP 15 13 10CB

SEE MAP 15 13 90D

RECEIVED  
JAN 21 1976  
WATER RESOURCES DEPT.  
SALEM, OREGON

15 13 9DA



T-3354  
"70" RE  
RECEIVED  
JAN 21 1976  
WATER RESOURCES DEPT.  
SALEM, OREGON

MCKENZIE

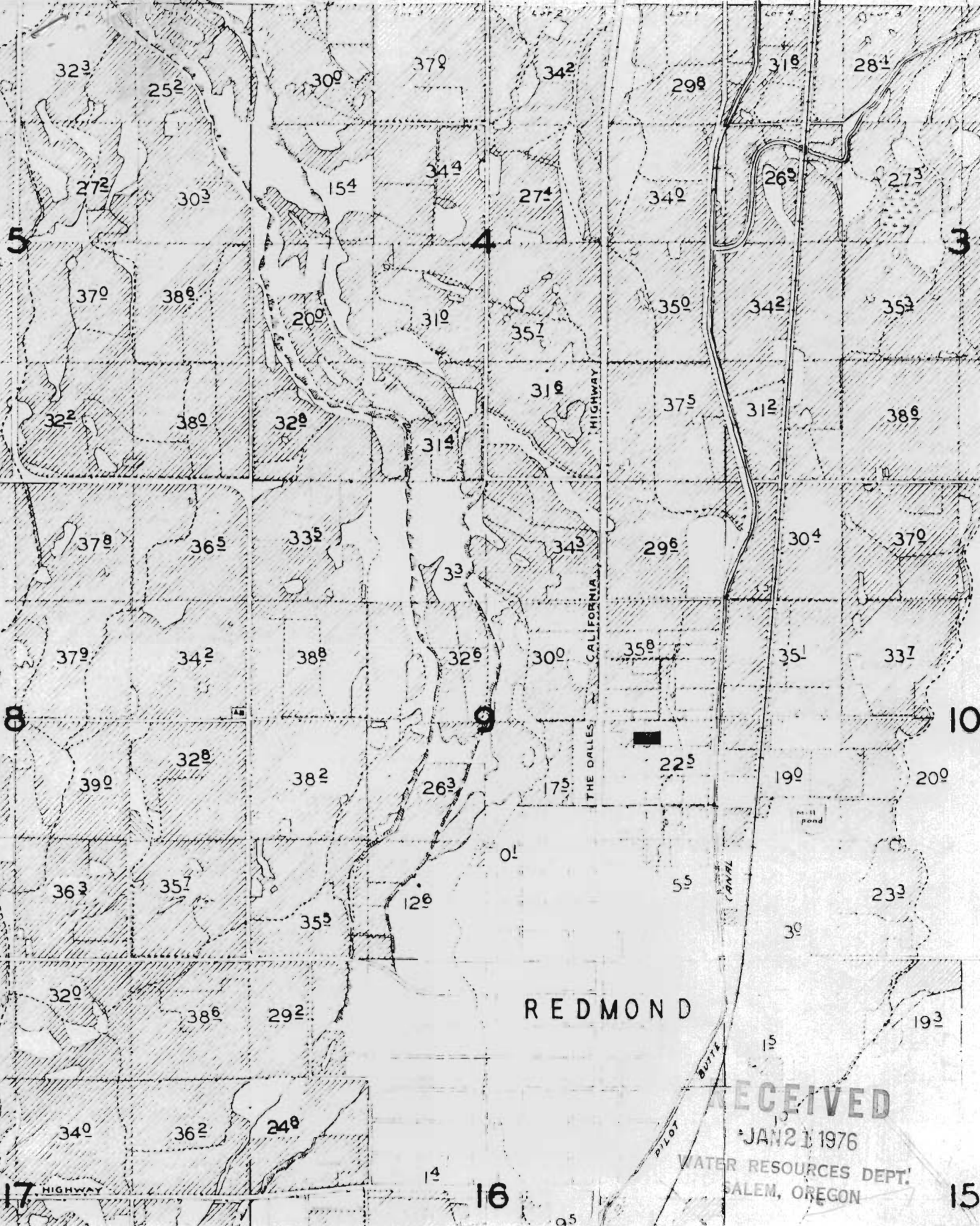
17 HIGHWAY

16

20

21





REDMOND

RECEIVED

JAN 21 1976

WATER RESOURCES DEPT.  
SALEM, OREGON