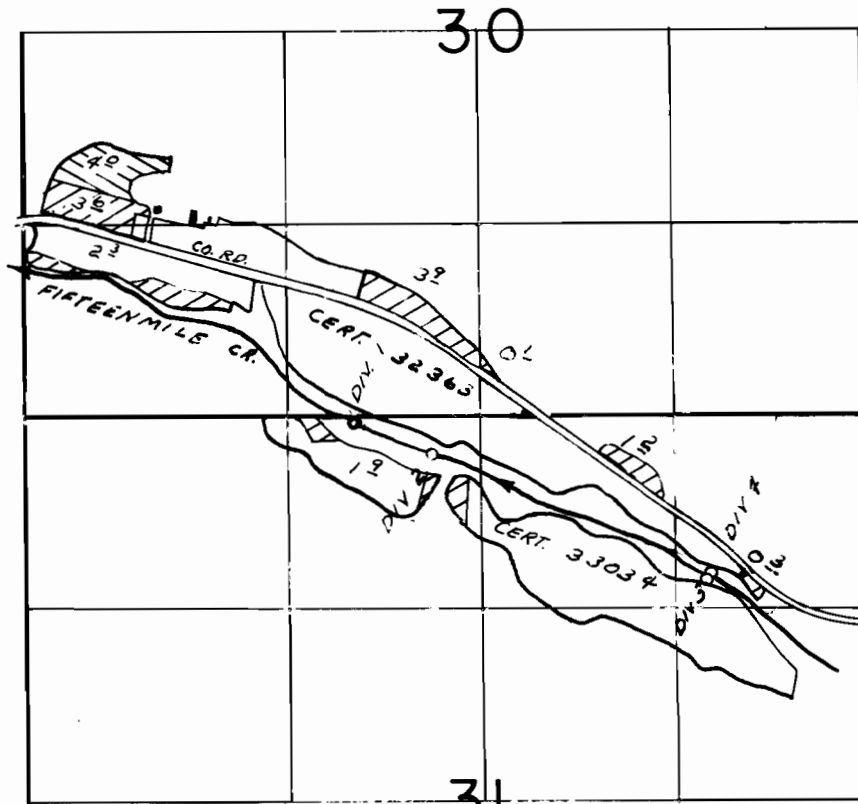


T.2N. R.15E. W.M.



DIV. 1 - 2300'E & 40'S; DIV. 2 - 270'S & 2800'E; DIV. 3 - 1120'S & 4670'E; DIV. 4 - 1080'S & 4710'E, ALL FROM THE NW CORNER SECTION 31

FINAL PROOF SURVEY
UNDER

TRANSFER NO. 3414
Application No. 54347... Permit No. 40741...
IN NAME OF

CLARENCE E. QUICK

Surveyed SEP. 16. 1977, by L.H. NUNN