

34 | 35  
3 | 2

T. 12 S.  
T. 13 S.

T. 13 S., R. 33 E.,  
W.M.

# Section 2

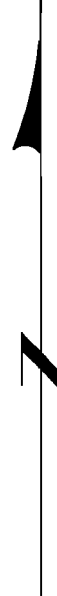
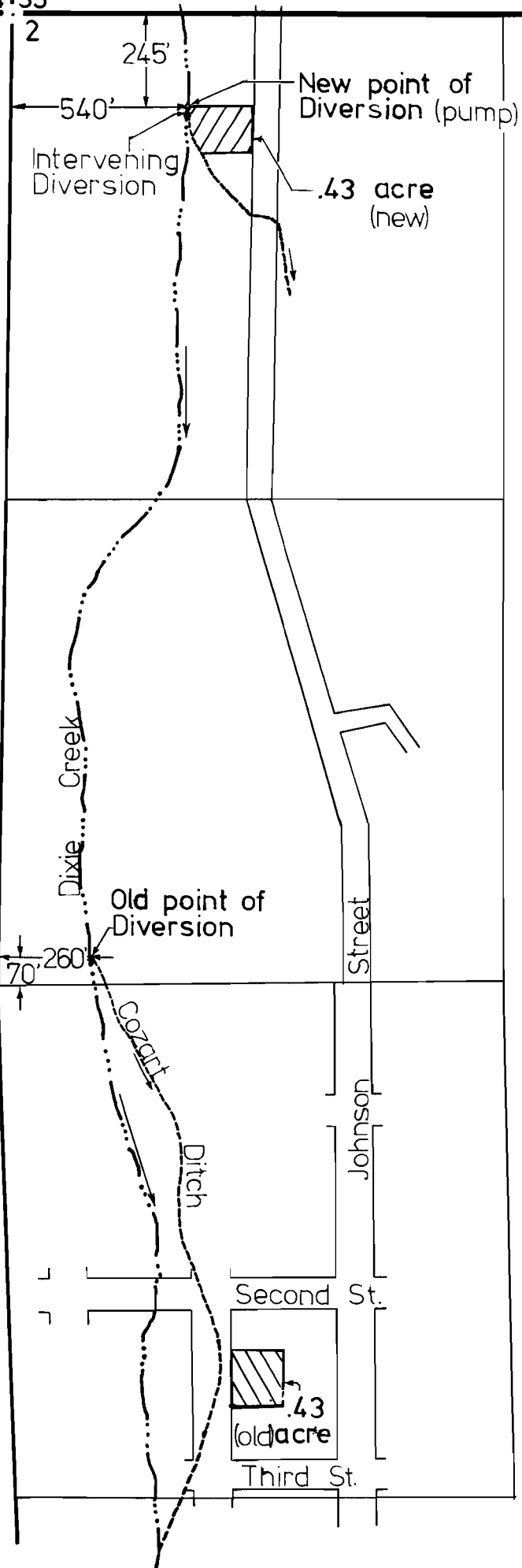
NW 1/4 NW 1/4 &  
NW 1/4 SW 1/4

Transfer application map for  
Carlyle Woodley

Map taken from County Assessor's  
maps and John Day Adjudication  
maps.

Scale: 1" = 400'

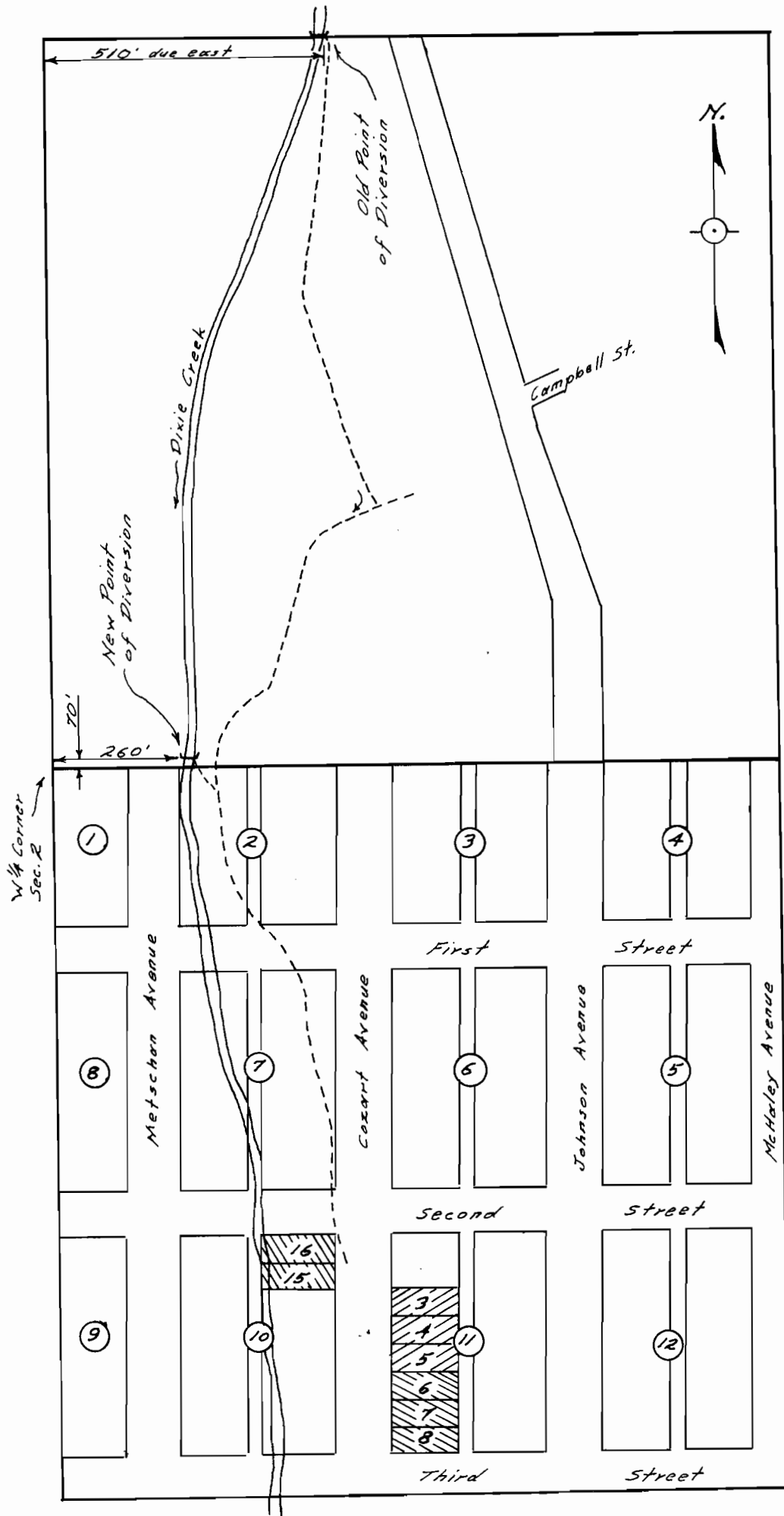
Transfer from Certificate 36815



**RECEIVED**  
 OCT 14 1976  
 WATER RESOURCES DEPT  
 SALEM, OREGON

Approved *Carlyle Woodley*  
 Drawn by Rod Allen,  
 Water Master's Office

T-3481



SW 1/4 NW 1/4 &  
 NW 1/4 SW 1/4  
 of Section 2,  
 Tp. 13 S. R. 33 E. W. M.

Scale: 1" = 264'  
 (same scale as adjudication  
 plat, page 120A)

**RECEIVED**  
 JUN 12 1968  
 STATE ENGINEER  
 SALEM OREGON

-----  
 applicant's approval