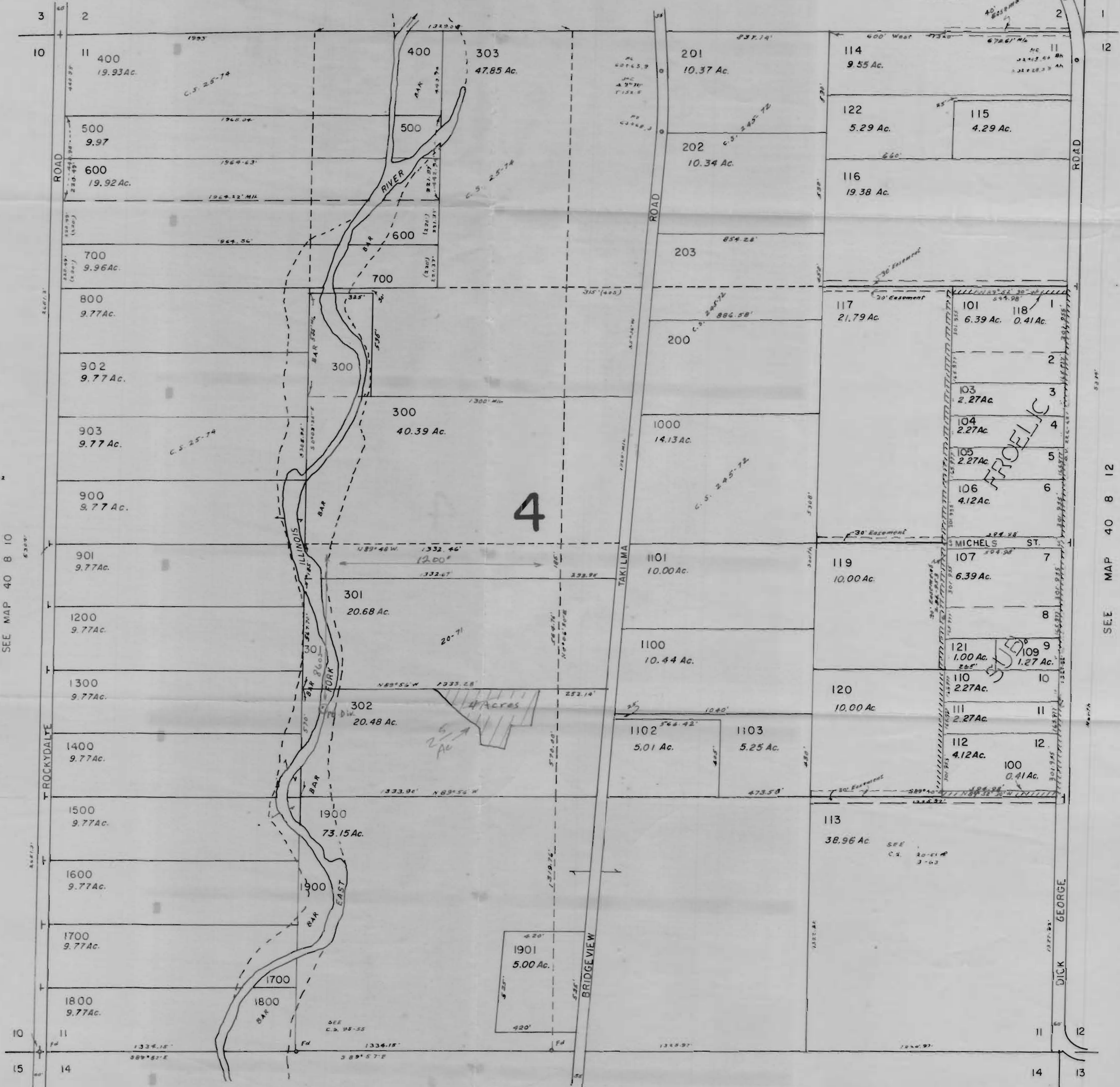


1"=400'

SEE MAP 40 8 2

RECEIVED
SEP 24 1974
STATE ENGINEER
SALEM, OREGON

CANCELLED T.L.
501
102
190
191
108



SEE C.S. 85-62

SE 1/4 of NW 1/4 Sec 14
Old Point of
Diversion 2640'S 1360'E
NW Corner of Sec 14

SEE MAP 40 8 10

SEE MAP 40 8 12

SEE MAP 40 8 14