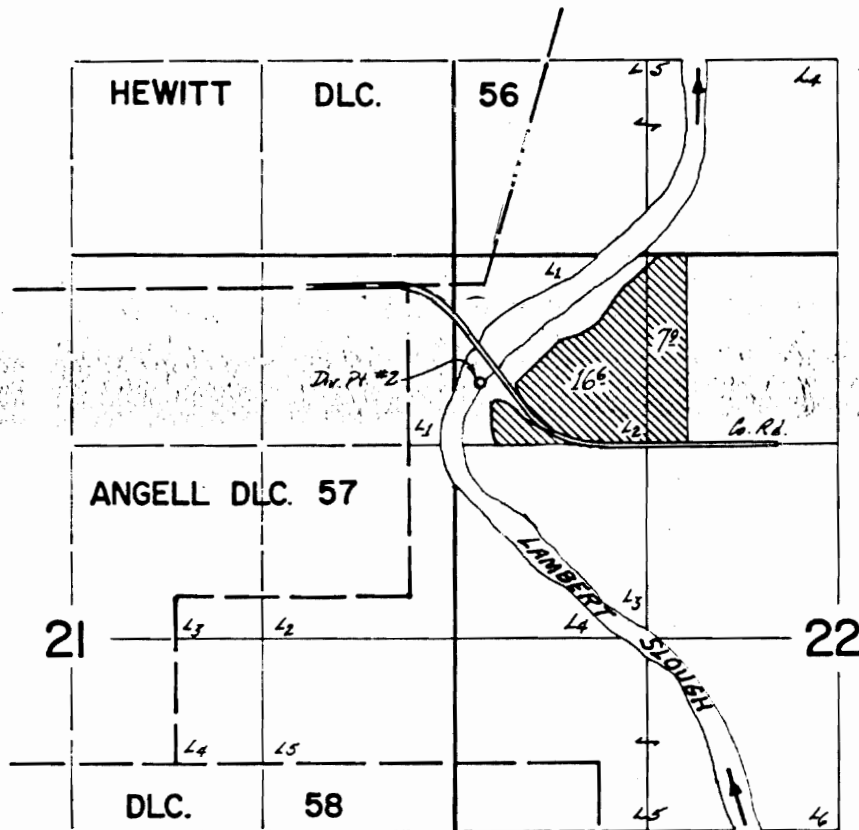


T.5S., R.3W., W.M.



Dir. Pts. located: #2 - 670' S. of 480' E.  
from the NE corner Angell DLC. 57.

**FINAL PROOF SURVEY**  
UNDER

TRANSFER NO. 3536

IN NAME OF  
**ROGER HILDEBRANDT**

SURVEYED MAY 28, 1980, BY *J. B. Brown*