

RECEIVED

MAY - 6 1977

WATER RESOURCES DEPT
SALEM, OREGON

SE 1/4 SEC. 24 T.18S. R.11E.W.M.
DESCHUTES COUNTY
1" = 200'

Dead Numbers 9500

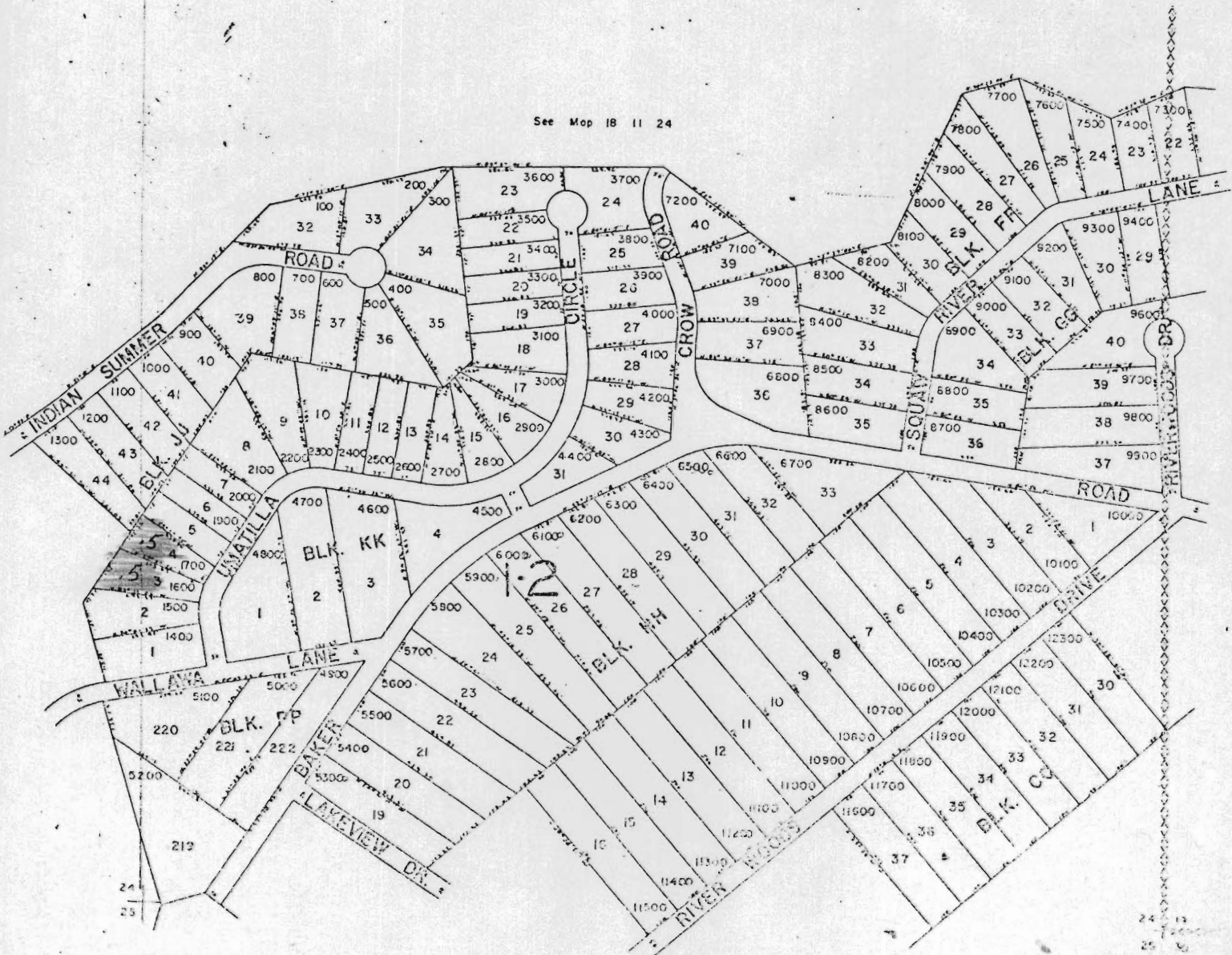
18 11 2

*Going to:
Jack Todd
SW 1/4 of S.E. 1/4 1.0 (Red)*

1/4 cor.

24 19

See Map 18 11 24



See Map 18 11 25A

18 11