

Donald C. Johnson to Walt Webb

T# 3683

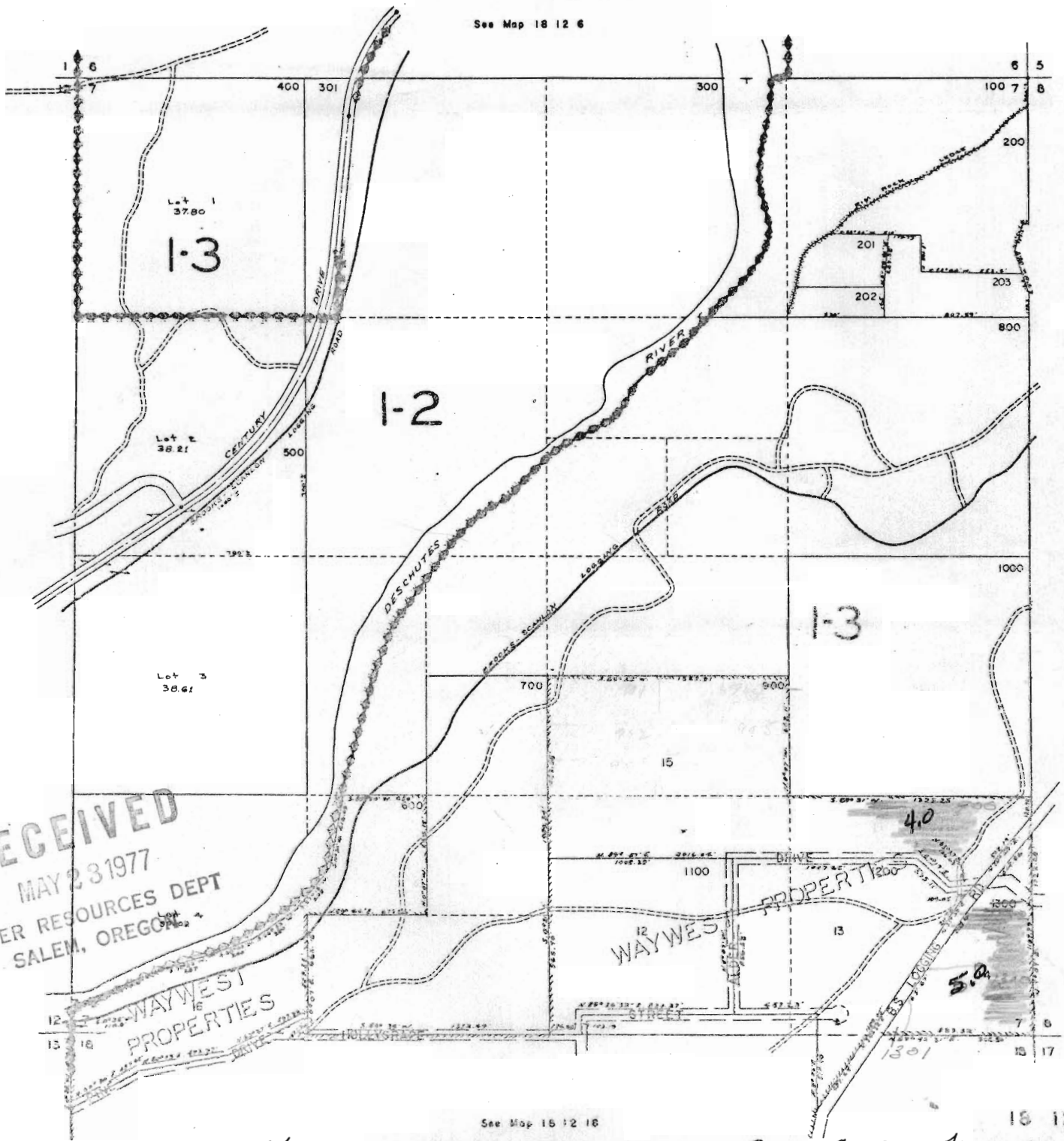
SEC. 7 T.18 S. R.12 E.W.M.

18 12 7

DESCHUTES COUNTY

SCALE: 1" = 400'

See Map 18 12 6



RECEIVED
 MAY 23 1977
 WATER RESOURCES DEPT
 SALEM, OREGON

WAYWEST
 PROPERTIES

WAYWEST
 DRIVE

See Map 18 12 18

18 12 7

SE 1/4 of SE 1/4 Sub 18-12-7 9.0 acres transferred on

See Map 18 11 12

See Map 18 12 6B

See Map 18 12 8C

Section 17, T.18S. R.12E.W.M.

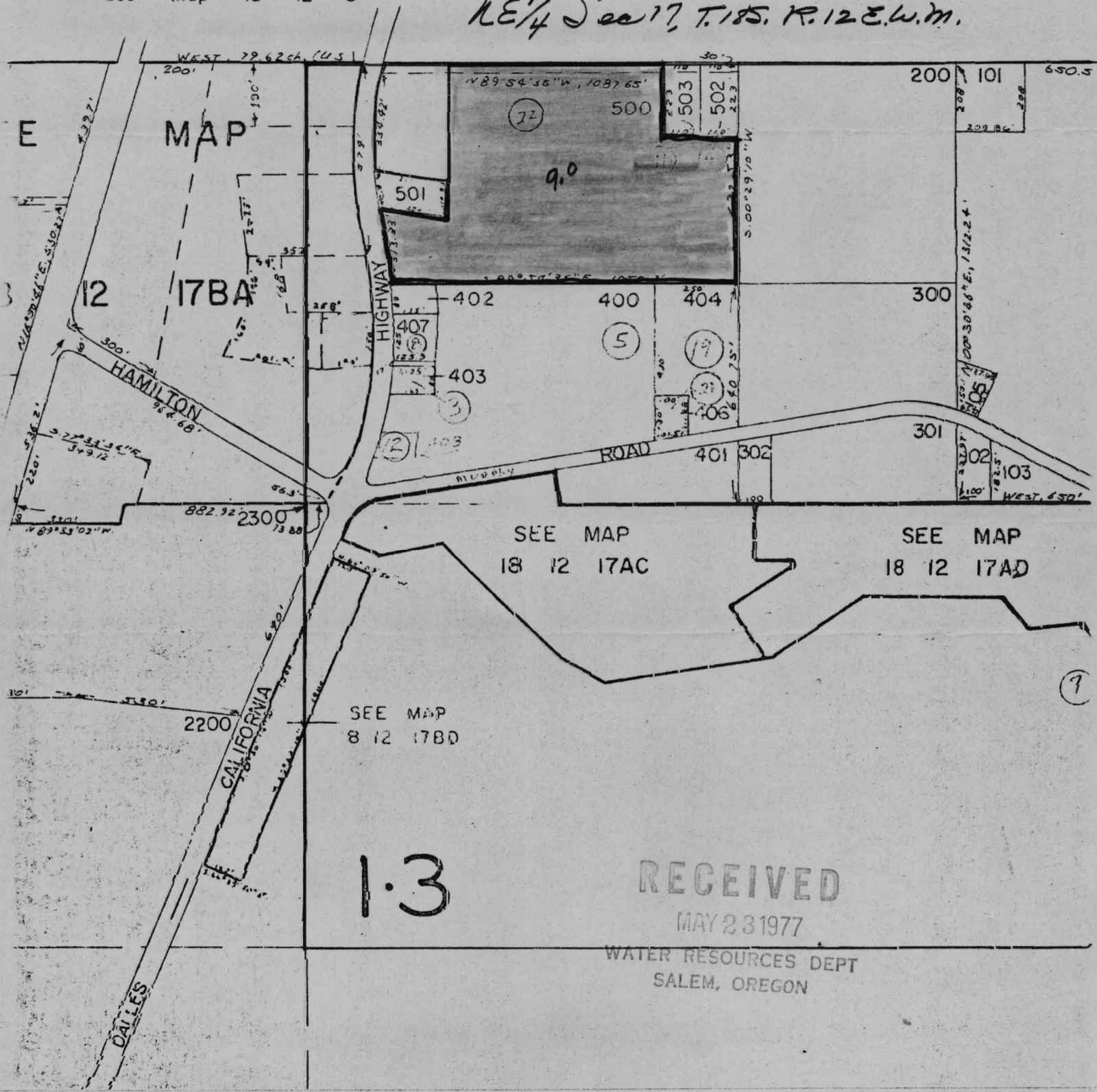
DESCHUTES COUNTY

1" = 400'

9.0 acres transferred off

See Map 18 12 8

NE 1/4 Sec 17, T.18S. R.12E.W.M.



RECEIVED

MAY 23 1977

WATER RESOURCES DEPT
SALEM, OREGON