

RECEIVED

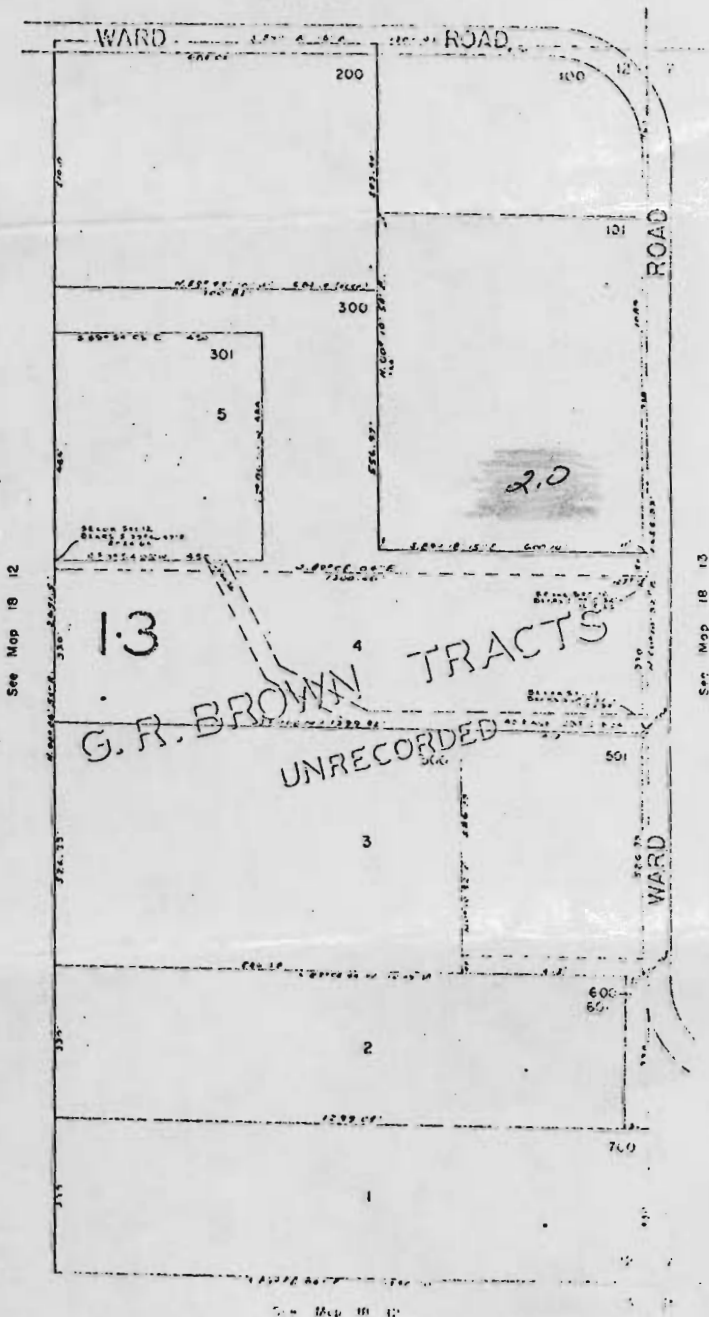
JUN 10 1977

WATER RESOURCES DEPT  
SALEM, OREGON

SE 1/4 SEC. 12 T18S. R12E W1M  
DESCHUTES COUNTY

1"=200'

See Map 18 12



18-12-12 D      N/E 1/4 of S/E 1/4      2.0 acres water  
 (on in Red)  
 (To Robert Foster)

SECTION 12, T12S, R12E, W11M  
DESCHUTES COUNTY  
OREGON

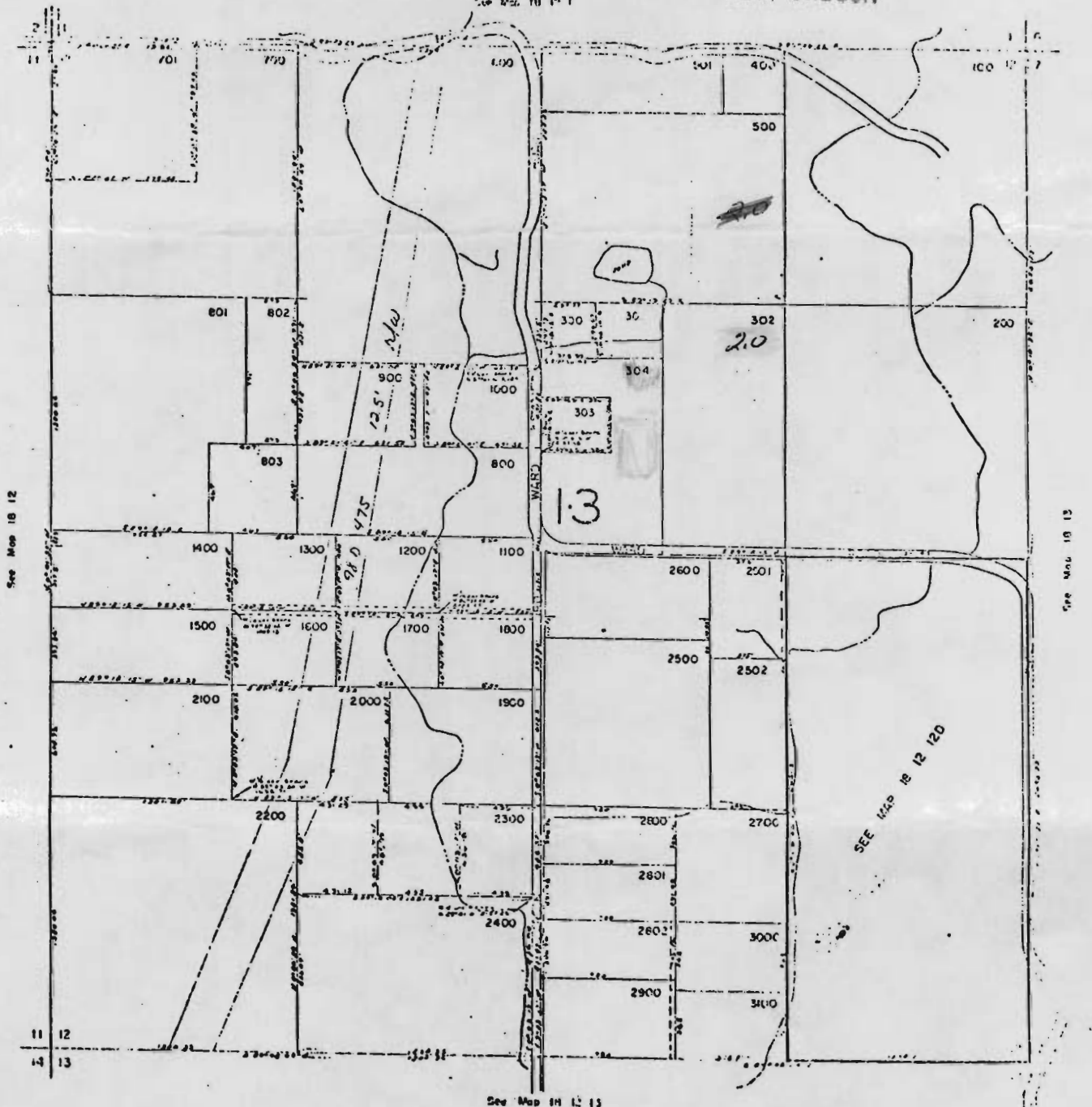
RECEIVED

18 12 1

JUN 10 1977

WATER RESOURCES DEPT  
SALEM, OREGON

See Map 18 12 1



See Map 18 12

See Map 18 13

See Map 18 12 13

18 12 1

18-12-12 N/W 1/4 of N/E 1/4 2.0 ac. water

(off in green)