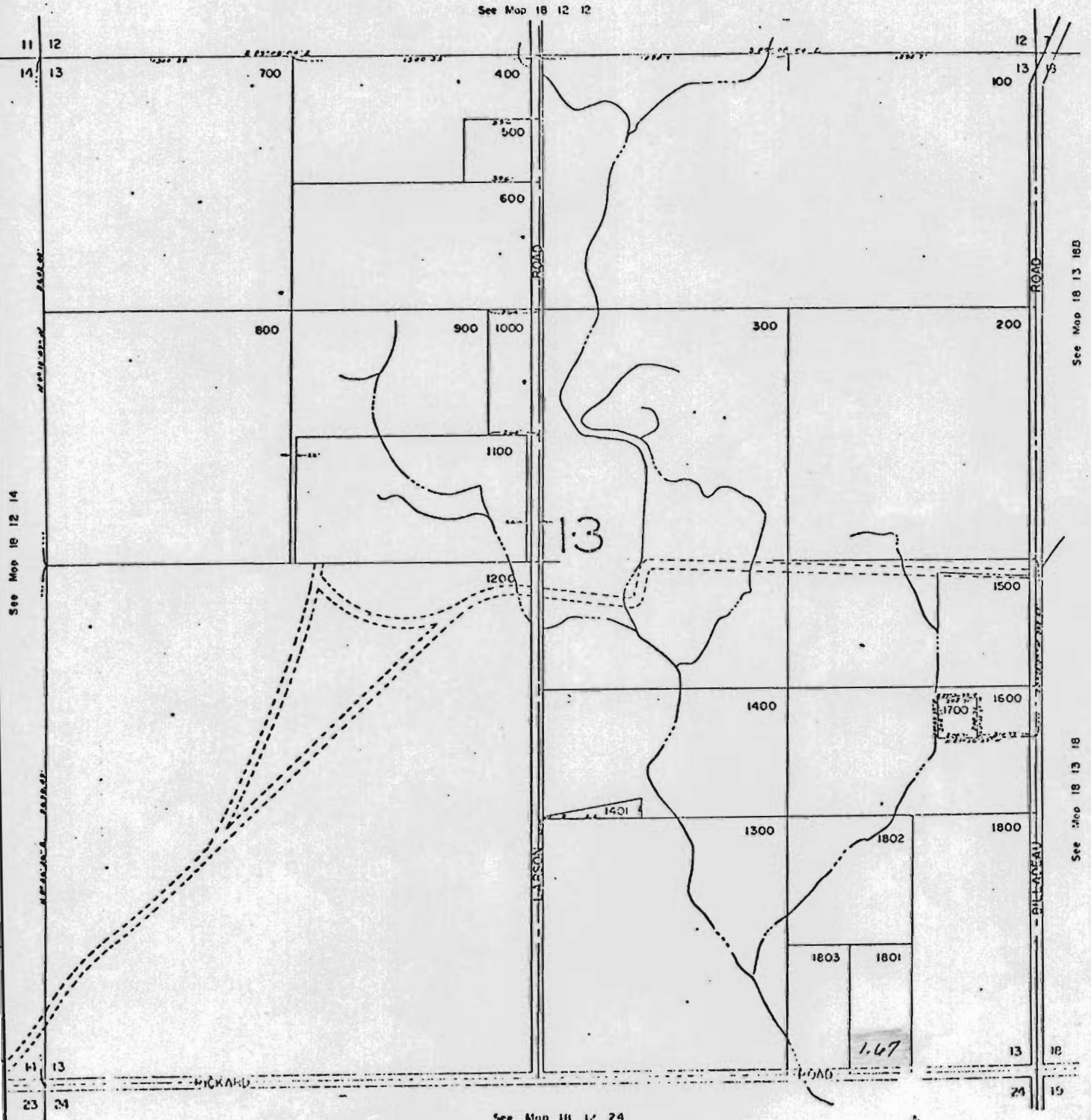


SECTION 13 T18S. R12E.W.M.
DESCHUTES COUNTY
1"=400'

RECEIVED 18 12 13
JUN 10 1977
WATER RESOURCES DEPT
SALEM, OREGON



18-12-13

Mr. W. Ping - S/E of S/E 1/4 1.67 to be put on;
(Colored in Red.)

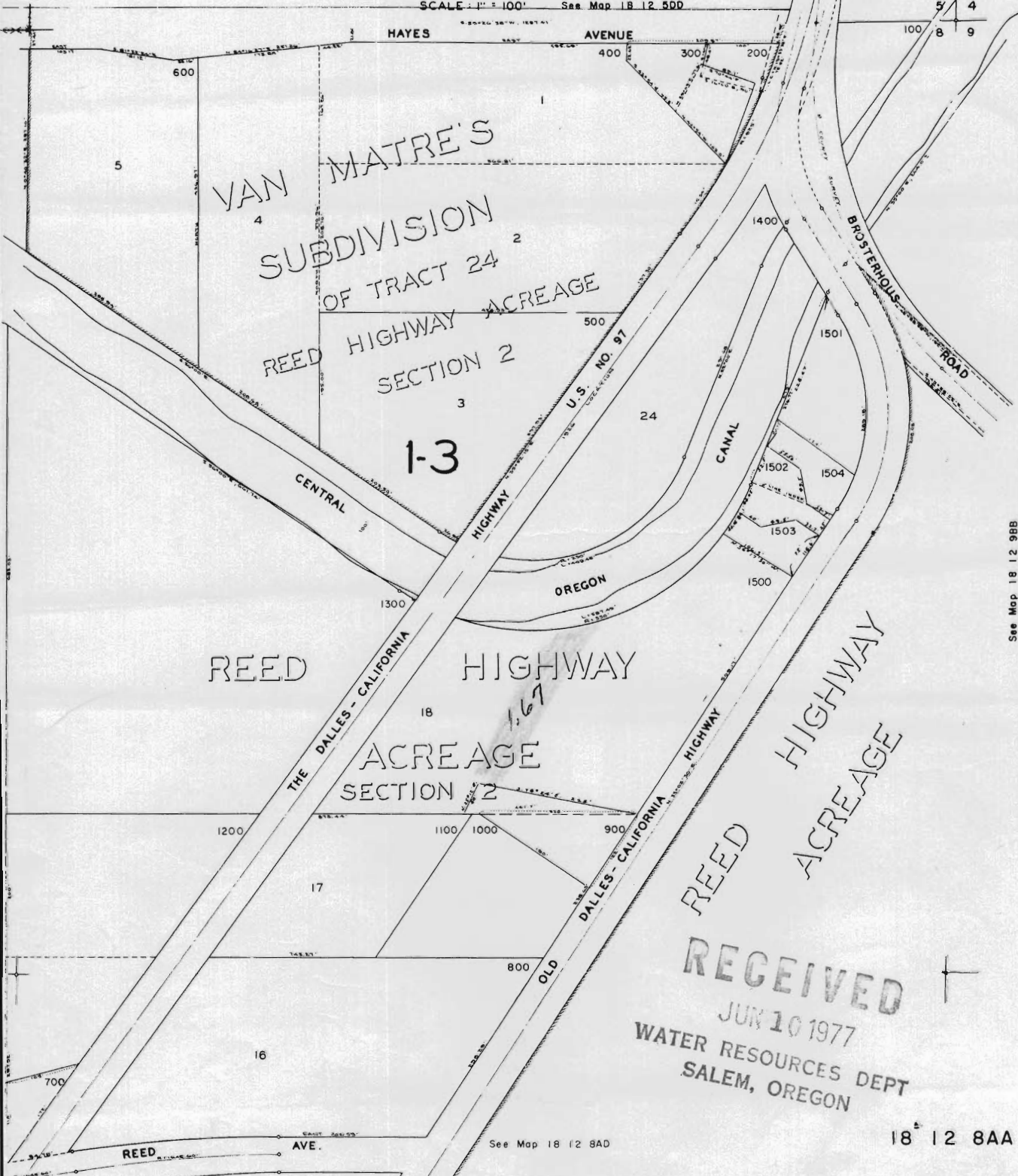
18 12 13

NE 1/4 NE 1/4 SEC. 8 T. 18S. R. 12E. W.M.

18 12 8AA

DESCHUTES COUNTY

SCALE: 1" = 100' See Map 18 12 5DD



See Map 18 12 9BB

RECEIVED
 JUN 10 1977
 WATER RESOURCES DEPT
 SALEM, OREGON

18 12 8AA

See Map 18 12 8AD

N.E 1/4 of N.E 1/4 18-12 8AA
 1.67 ac. water off. (In green)