

RECEIVED

JUN 16 1977

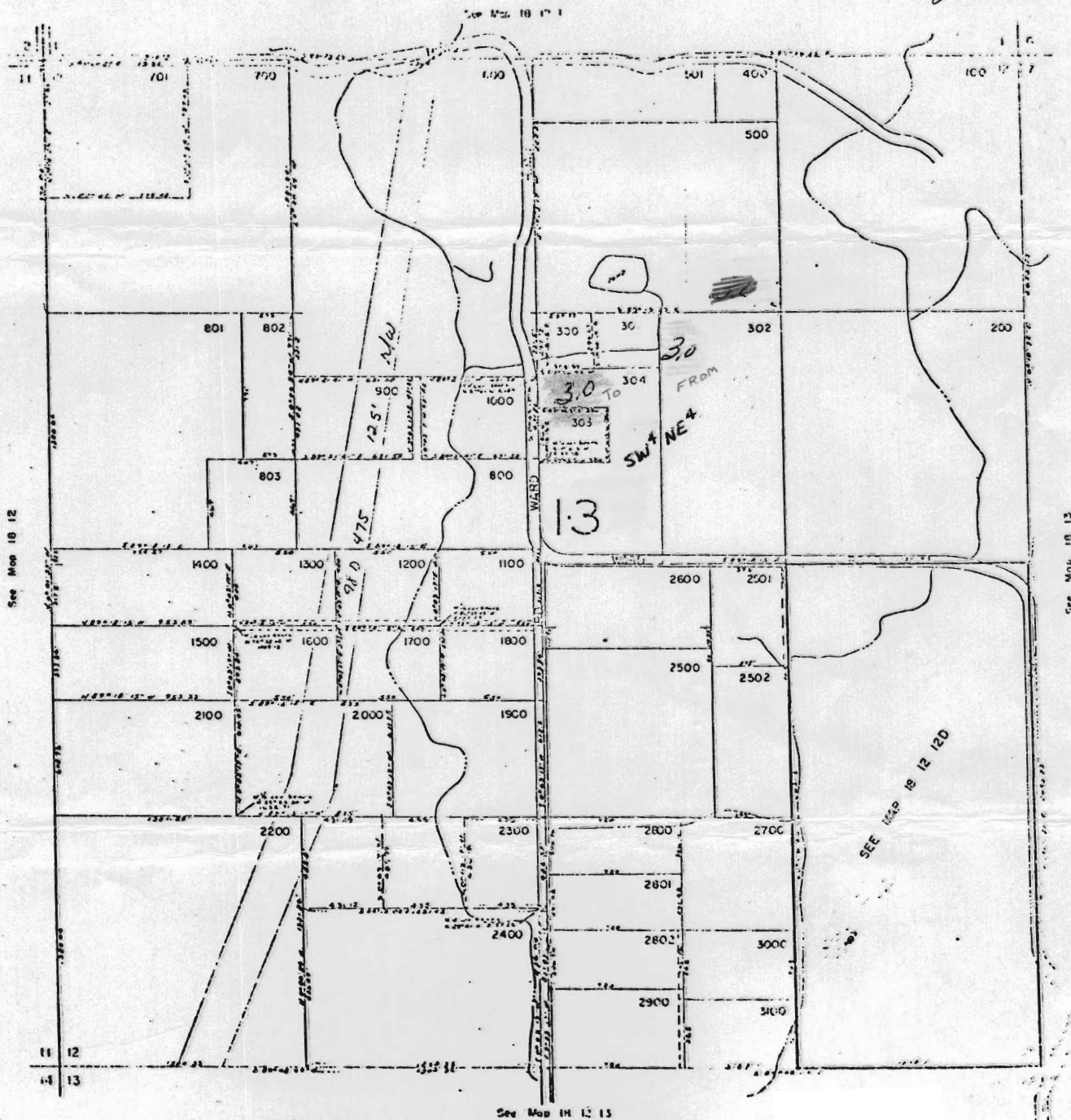
WATER RESOURCES DEPT
SALEM, OREGON

SECTION 12 T1BS R12EWN

DESCHUTES COUNTY

13 12 1

18-12-12 ~~SW~~ ^{S/W} 1/4 of NE 1/4 3.0 acres transferred off colored in green



18-12-12 ~~SW~~ ^{S/W} 1/4 of NE 1/4 3.0 acres transferred on colored in red
Richard Odle

13 12 12