

T18S, R12E

T-3740

"1N"

RECEIVED

AUG 7 1978

WATER RESOURCES DEPT.
SALEM, OREGON

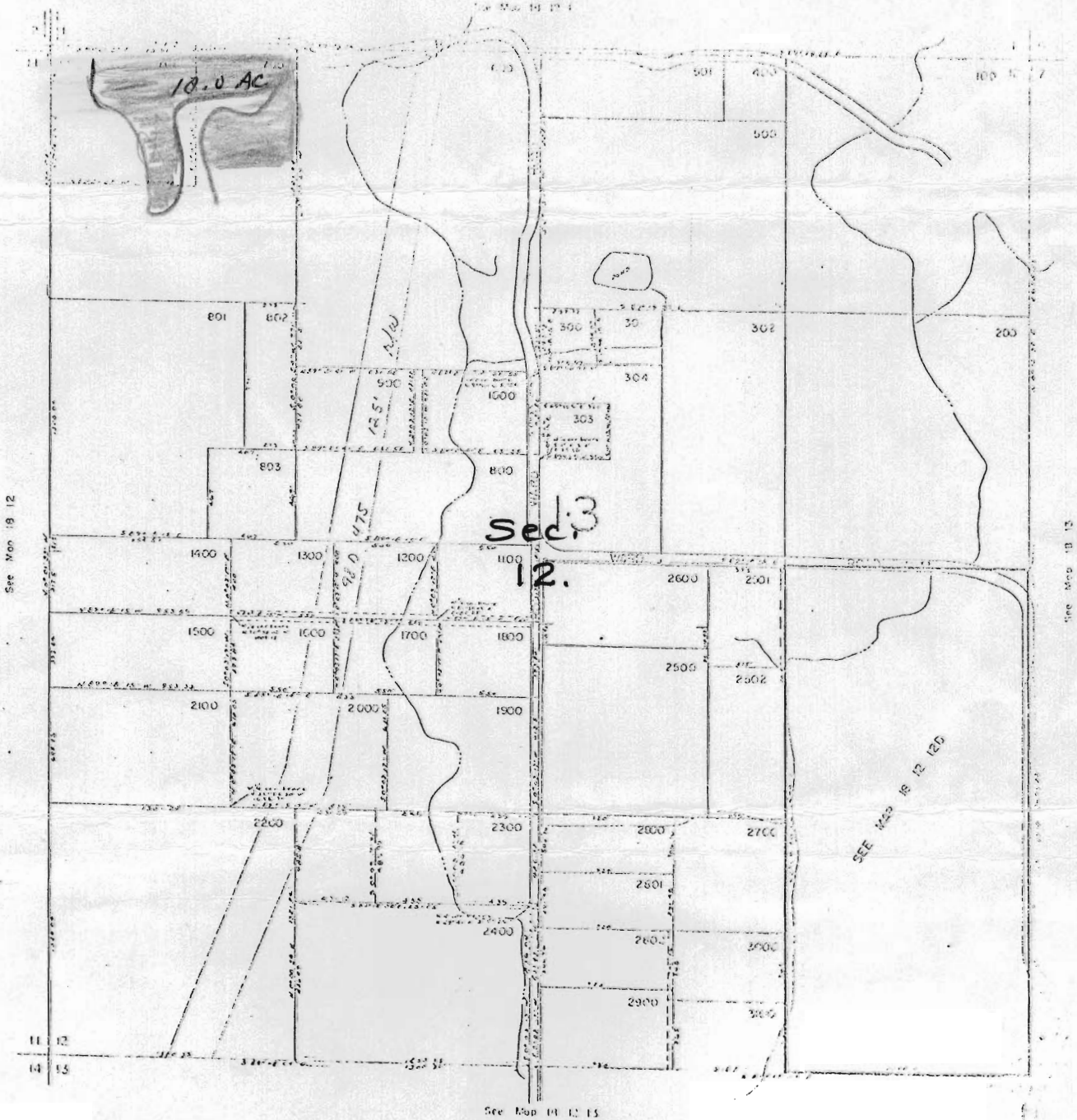
SECTION 12, T18S R12E WM

DESSAULT COUNTY

RECEIVED

JUL 27 1977

WATER RESOURCES DEPT.
SALEM, OREGON



J. Barrett

18-12-12 NW 1/4 of NW 1/4 10.0 ac. transferred on
In Red

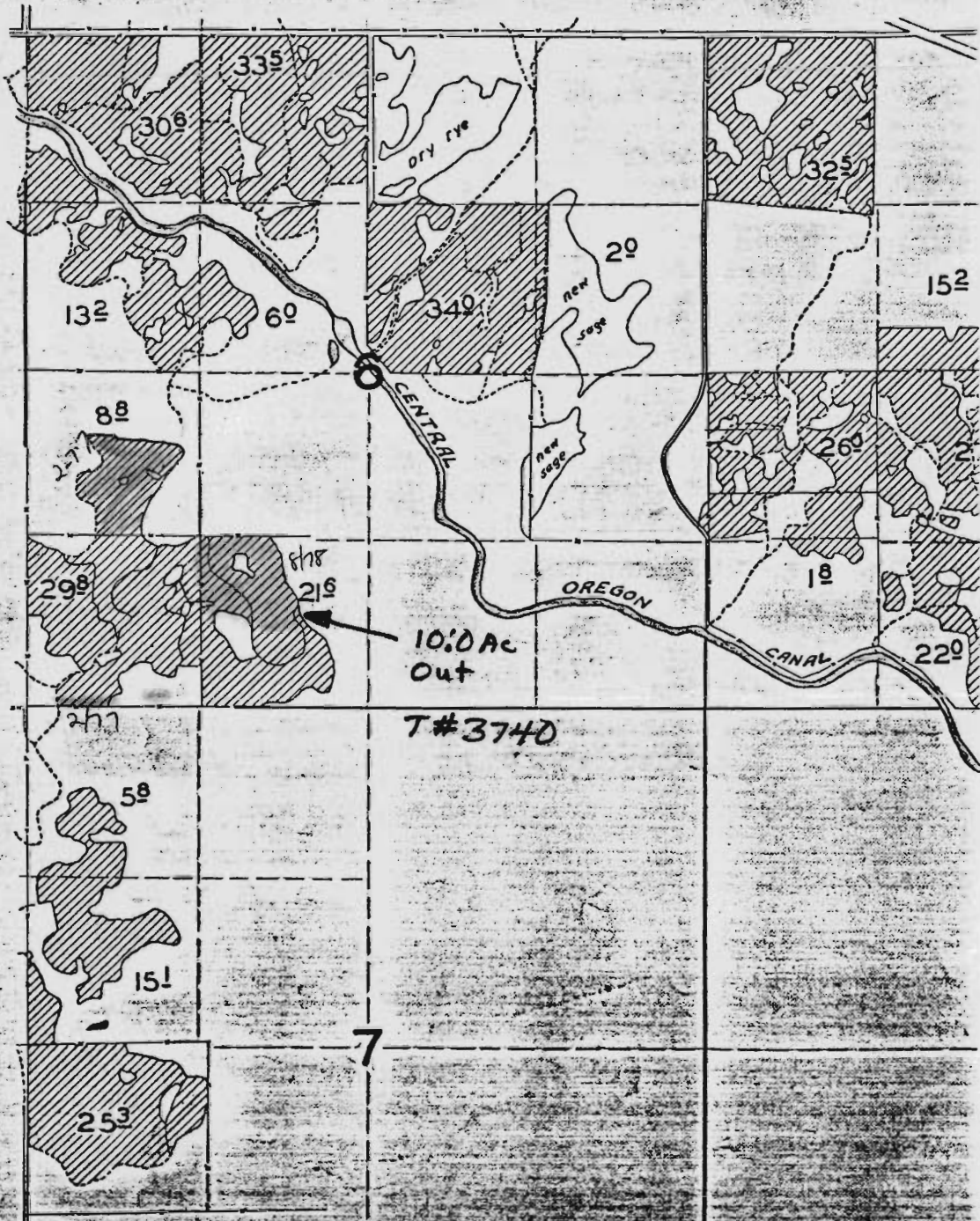
T-3740

T. 18 S., R. 13 E., W.M.

RECEIVED

AUG 7 1978

WATER RESOURCES DEPT.
SALEM, OREGON



T-3740
"OUT"

RECEIVED

AUG 7 1978

WATER RESOURCES DEPT.
SALEM, OREGON

SECTION 6 T18S. R13E.W1M.
DESCHUTES COUNTY
1"=400'

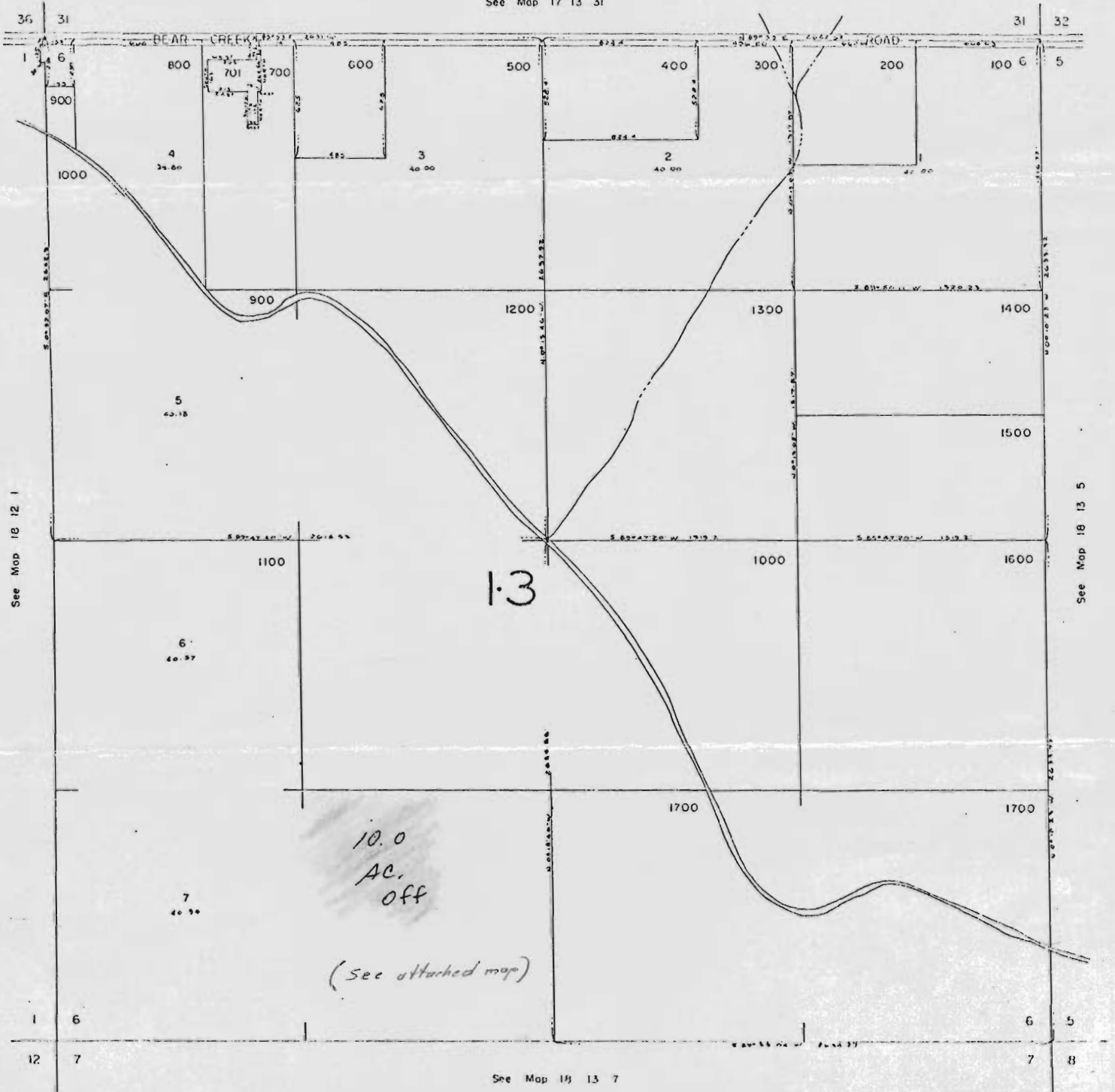
RECEIVED

JUL 27 1977

WATER RESOURCES DEPT
SALEM, OREGON

18 13 6

See Map 17 13 31



18-13-6 SE 1/4 of SW 1/4 10.0 ac. transferred off 18 13 6
D. Rastovich In Green