

RECEIVED

Section 32, T.16 S. R.12 E. W.M.

dead numbers
603

16

OCT 14 1977

DESCHUTES COUNTY

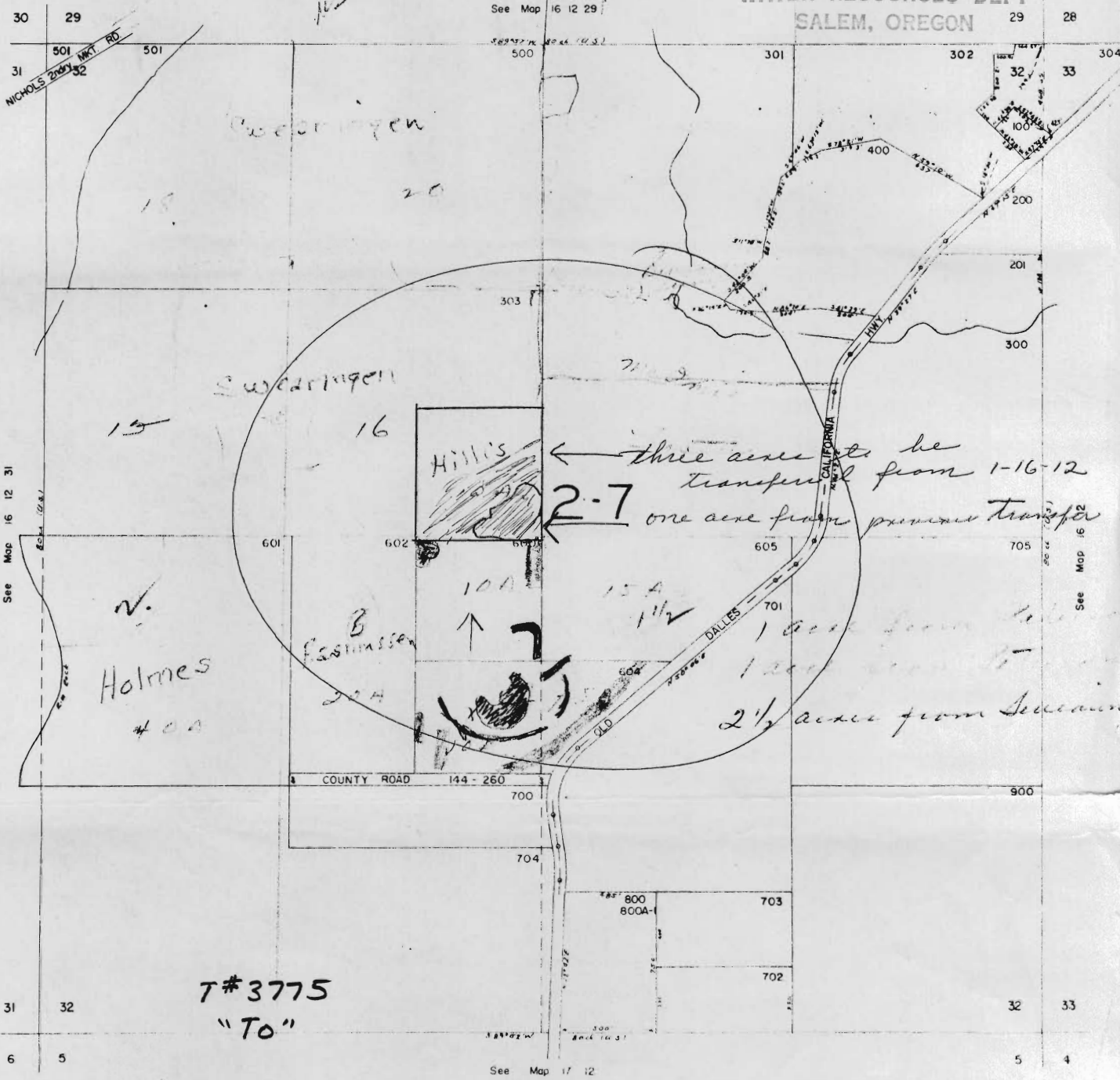
1" = 400'

WATER RESOURCES DEPT.
SALEM, OREGON

RECEIVED

SEP - 8 1977

WATER RESOURCES DEPT
SALEM, OREGON



T#3775
"To"

16
5
2 1/2
1 1/2
7

NESW

119 Swalley
1 001

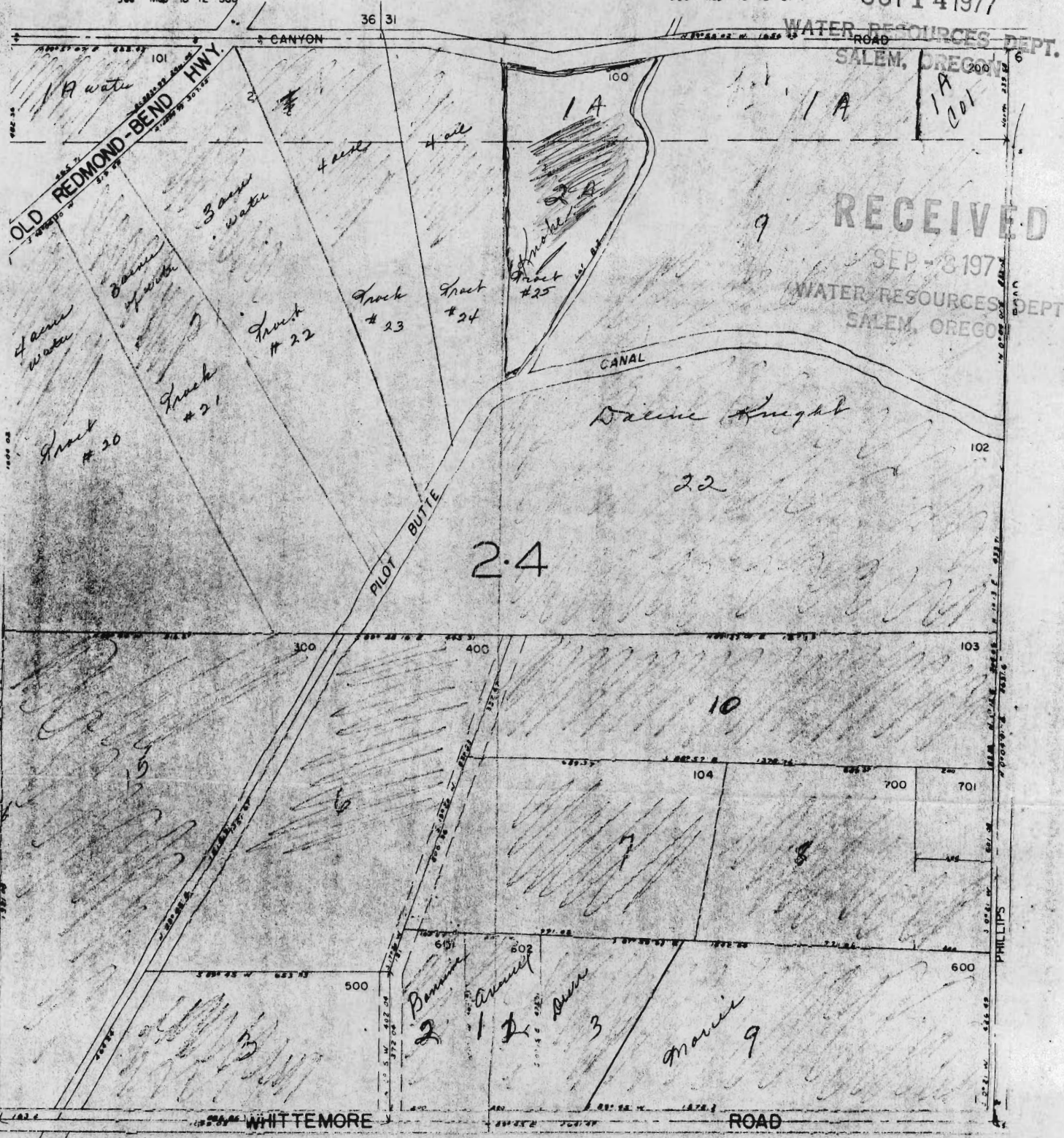
E1/4 SEC 1 T.16S. R.12E.W.M.
DESCHUTES COUNTY

1"=200'

RECEIVED
OCT 14 1977

See Map 15 12 360

See Map 15 13 31



WATER RESOURCES DEPT.
SALEM, OREGON

RECEIVED
SEP - 8 1977
WATER RESOURCES DEPT.
SALEM, OREGON

T #3775

"FROM"

WATER RESOURCES DEPT.
SALEM, OREGON

RECEIVED
OCT 14 1977

