

RECEIVED

OCT 16 1978

WATER RESOURCES DEPT.
SALEM, OREGON

Lot 2

Lot 3
230

Lot 4
182

100
230
160

new sage
231
new sage
224

Lot 1
334
75
new sage

18

147
new sage
304
300
375

19

340
350
341
368
368

372
388
350
338
297
380

374
301

17

105
85
Cleared but irrigated
195
19

BEND AIRPORT
120
180
50
128
345
220

20

262
320
300
280
40
210
318
220

304

RECEIVED

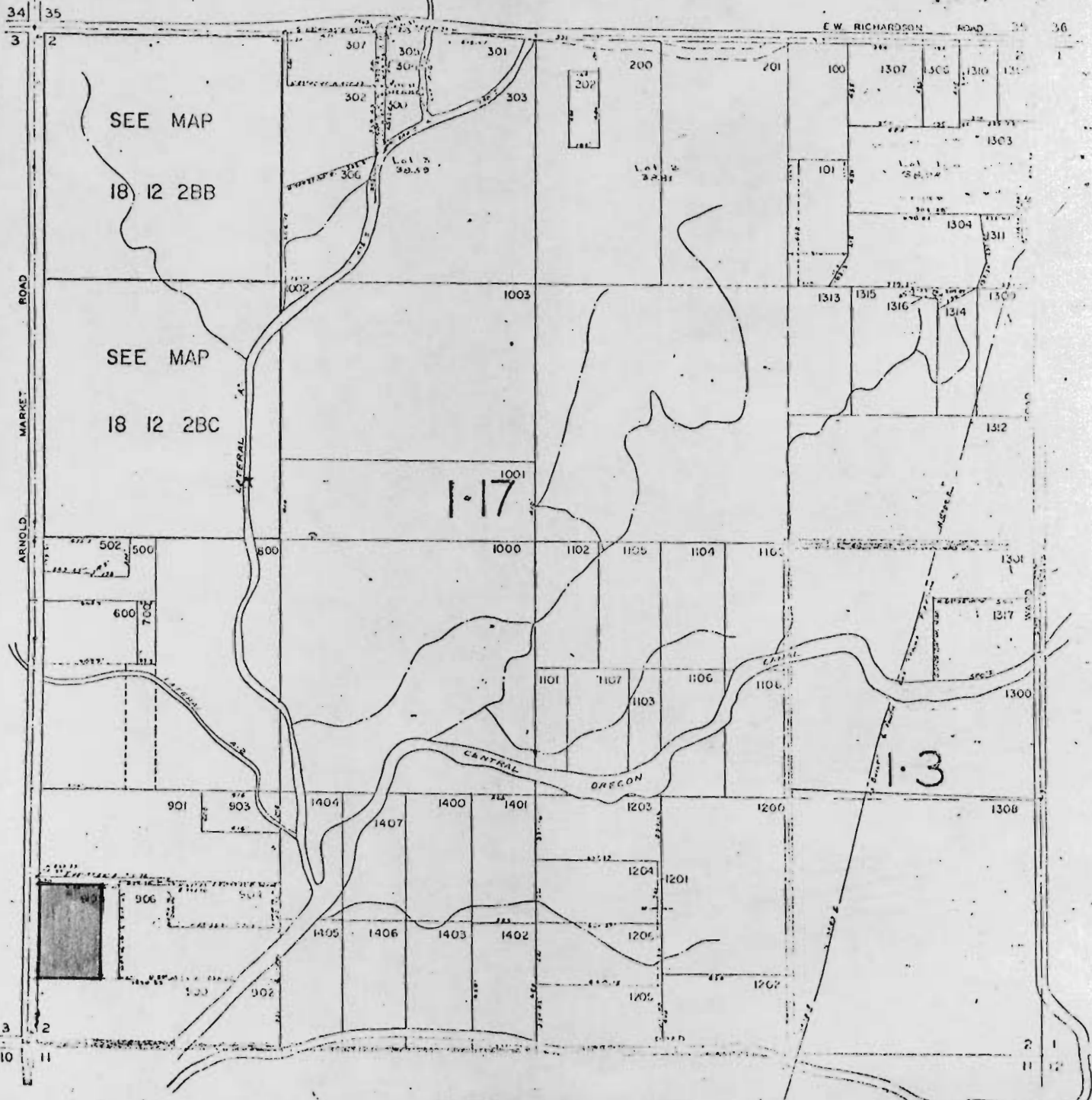
SEP 28 1977

WATER RESOURCES DEPT.
SALEM, OREGON

DESCHUTES COUNTY

SCALE: 1" = 400'

See Map 17 12 35



See Map 18 12 3

RECEIVED

OCT 16 1978

WATER RESOURCES DEPT. WATER RESOURCES DEPT
SALEM, OREGON SALEM, OREGON

RECEIVED

SEP 28 1977

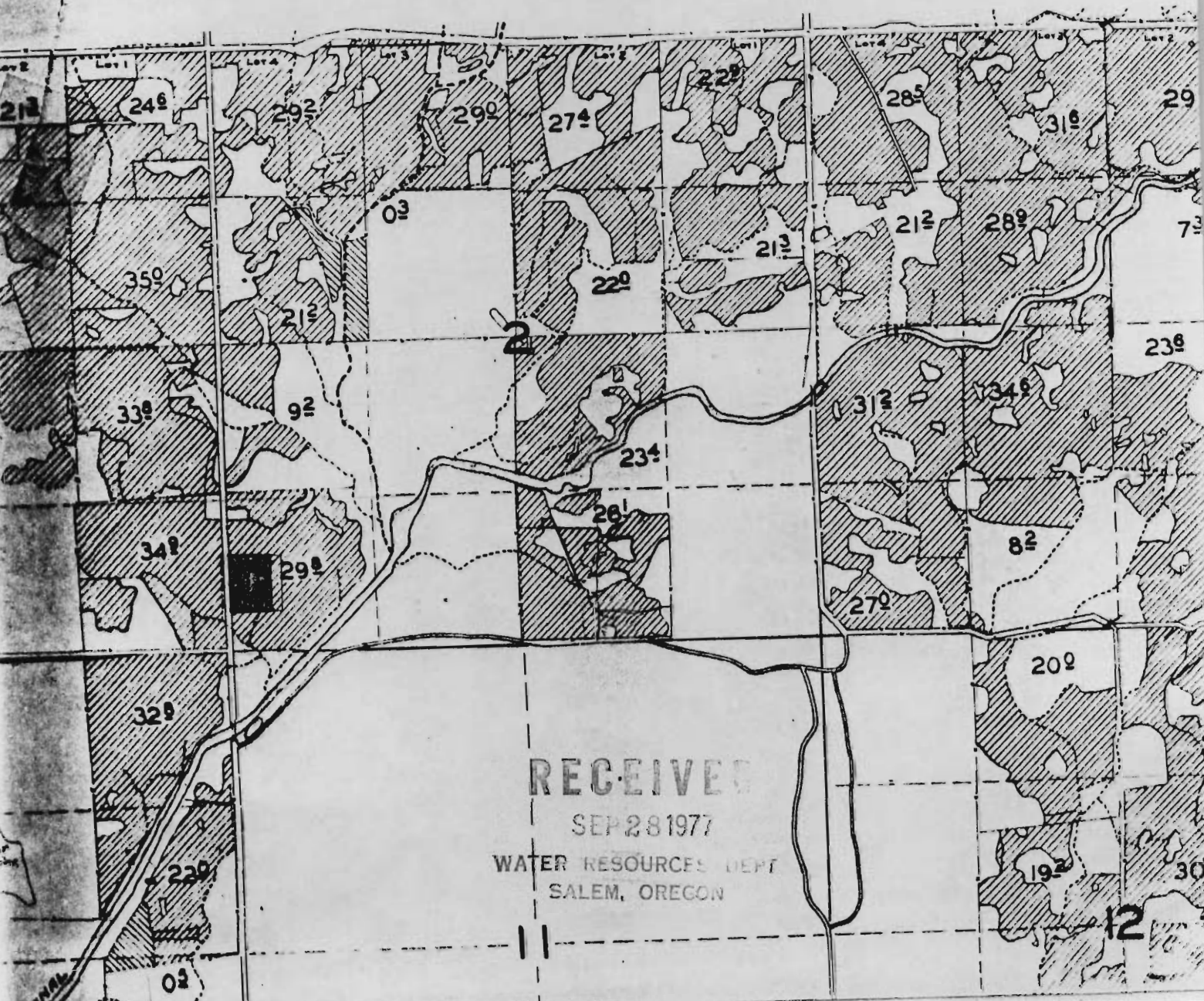
18 12 2

EAST, W.M.

RECEIVED

OCT 16 1978

WATER RESOURCES DEPT.
SALEM, OREGON



RECEIVED

SEP 28 1977

WATER RESOURCES DEPT.
SALEM, OREGON