

T-3824

note

5 acres of land w/ one acre coming by transfer from 20-17-12

SEC. 17 T.17S. R.12E.W.M.

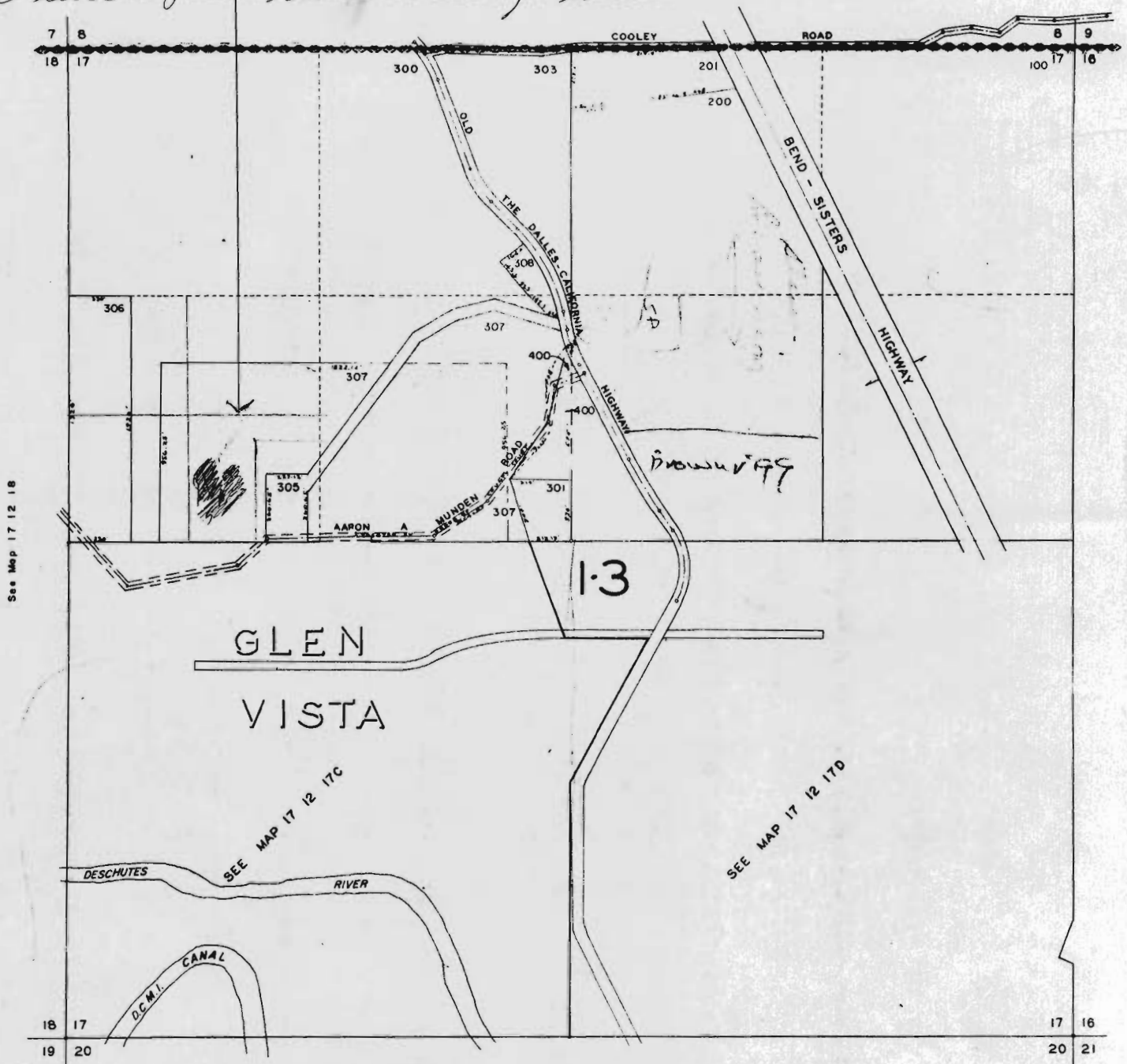
17 12 17
8 INDEX
TL 302 Dead
304

One acre to be DESCHUTES COUNTY

transferred from John Olson

SCALE: 1" = 400'
AS SHOWN ON MAP

This well put two acres of water on this land.



See Map 17 12 18

See Map 17 12 20B

See Map 17 12 20A

RECEIVED

OCT 14 1977

WATER RESOURCES DEPT.
SALEM, OREGON

17 12 1
8 INDEX