

SW 1/4 - Sec 9
18-12-9-C

T-3835

RECEIVED

NOV 9 1977

WATER RESOURCES DEPT
SALEM, OREGON

From

SW 1/4 SEC 9 T18N R12E W11N

DEDEHITES COUNTY

SCALE 1" = 200'

RECEIVED

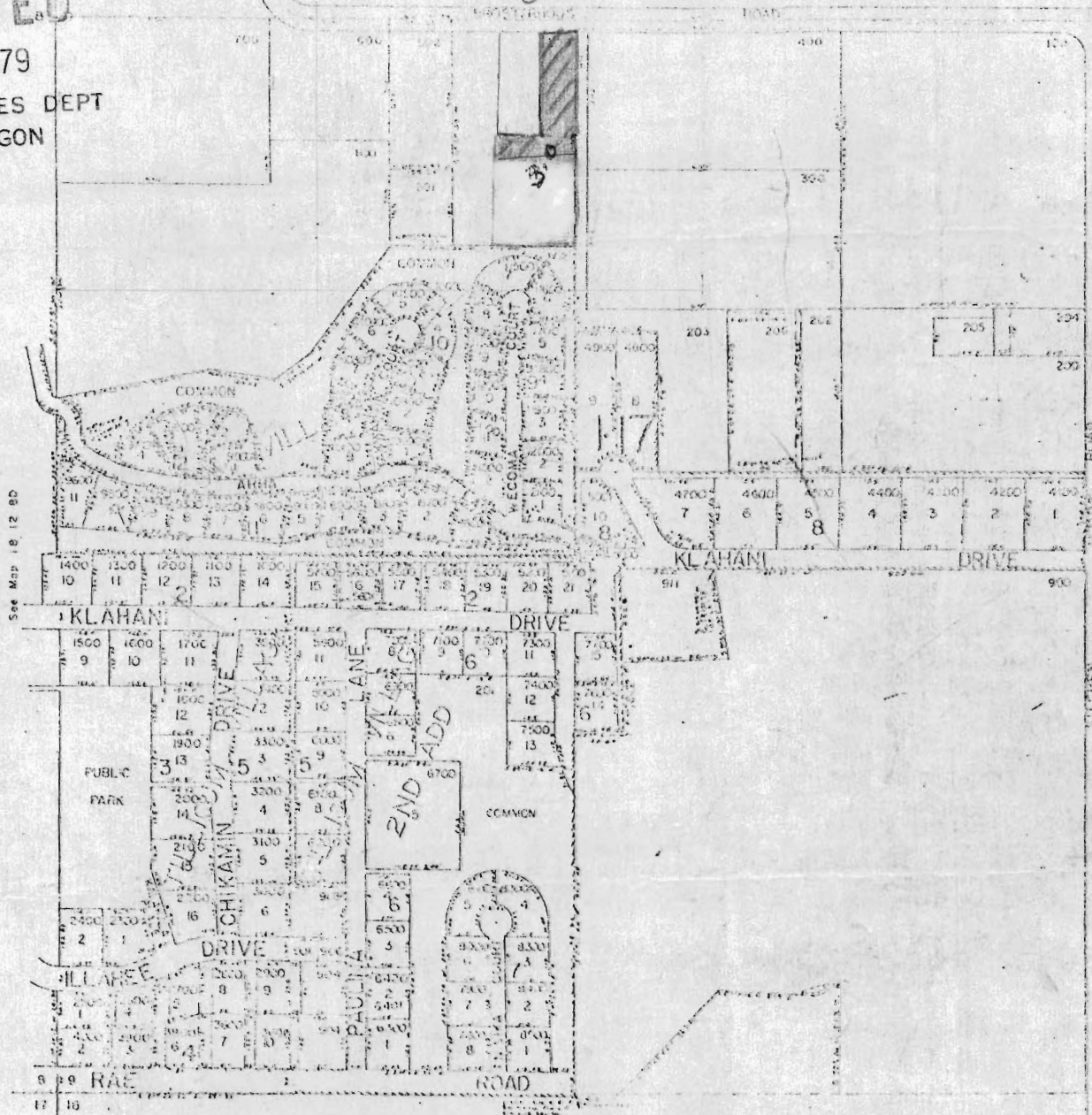
APR 05 1979

WATER RESOURCES DEPT.
SALEM, OREGON

RECEIVED

JUL 25 1979

WATER RESOURCES DEPT
SALEM, OREGON



See Map 18 12 9D

See Map 18 12 9D

SW 1/4 of SW 1/4 18-12-9 C 3.0 acres transferred off

Janela Court / D. Franke owner Date:

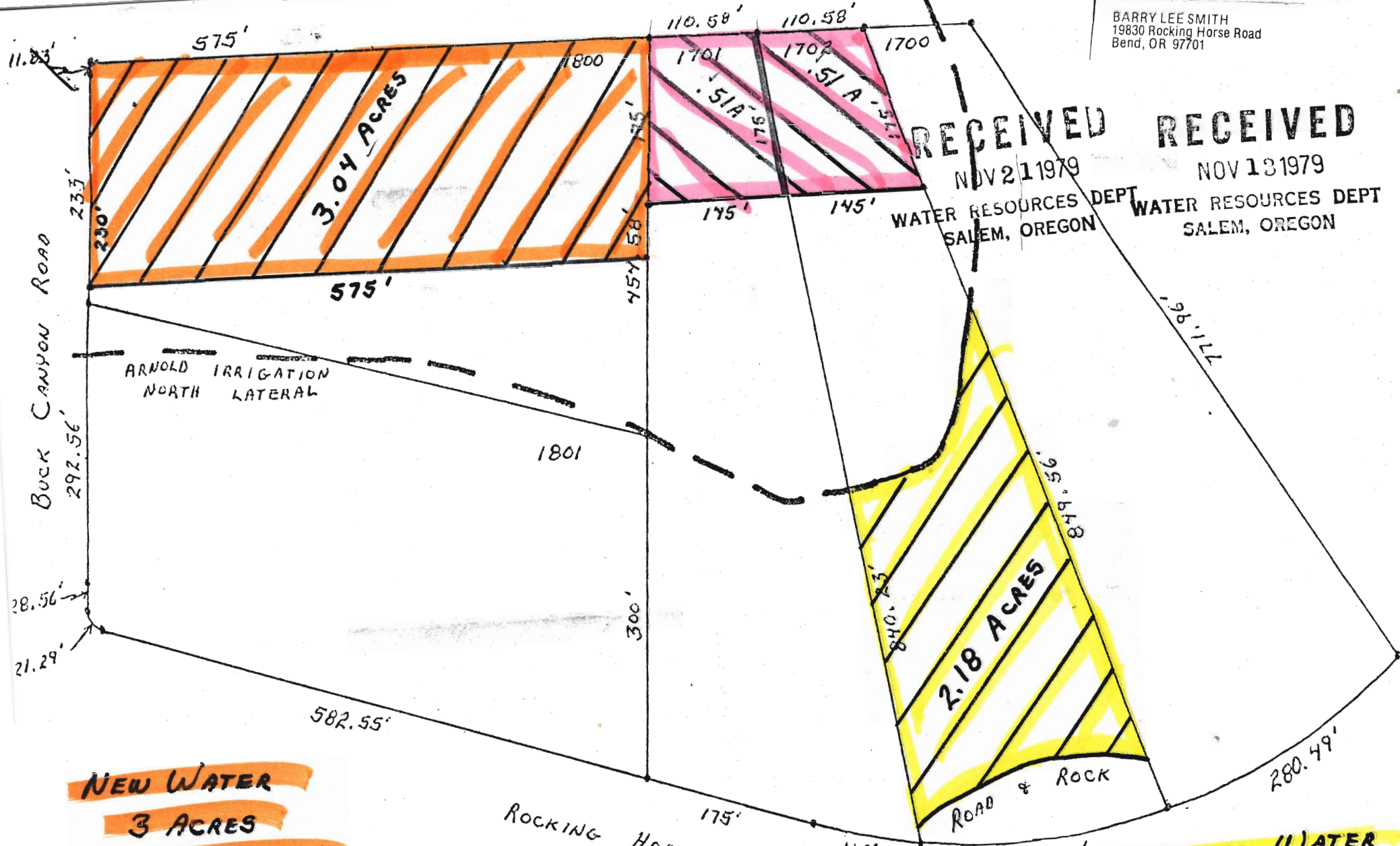
BARRY LEE SMITH
19830 Rocking Horse Road
Bend, OR 97701

RECEIVED
NOV 21 1979

WATER RESOURCES DEPT
SALEM, OREGON

RECEIVED
NOV 13 1979

WATER RESOURCES DEPT
SALEM, OREGON



NEW WATER
3 ACRES
TRANSFER # 3835
TAX LOT 1800
NE OF NW + NW OF NE
1.8A 1.2A

NEW WATER
1 ACRE
TRANSFER # 3834
TAX LOT 1701 1/2 A
1702 1/2 A
NW OF NE

ORIGINAL WATER
2 ACRES
TAX LOT 1702
SW OF NE

SCALE 3/4" = 100' (6-7-11-179)