

RECEIVED

NOV 17 1977

WATER RESOURCES DEPT  
SALEM, OREGON

SYMBOLS

- Fd 3/4" IR
- Set 5/8" IR
- Set 1/2" IR
- Set 2" IR w/plug & tack
- Fd Brass Cap

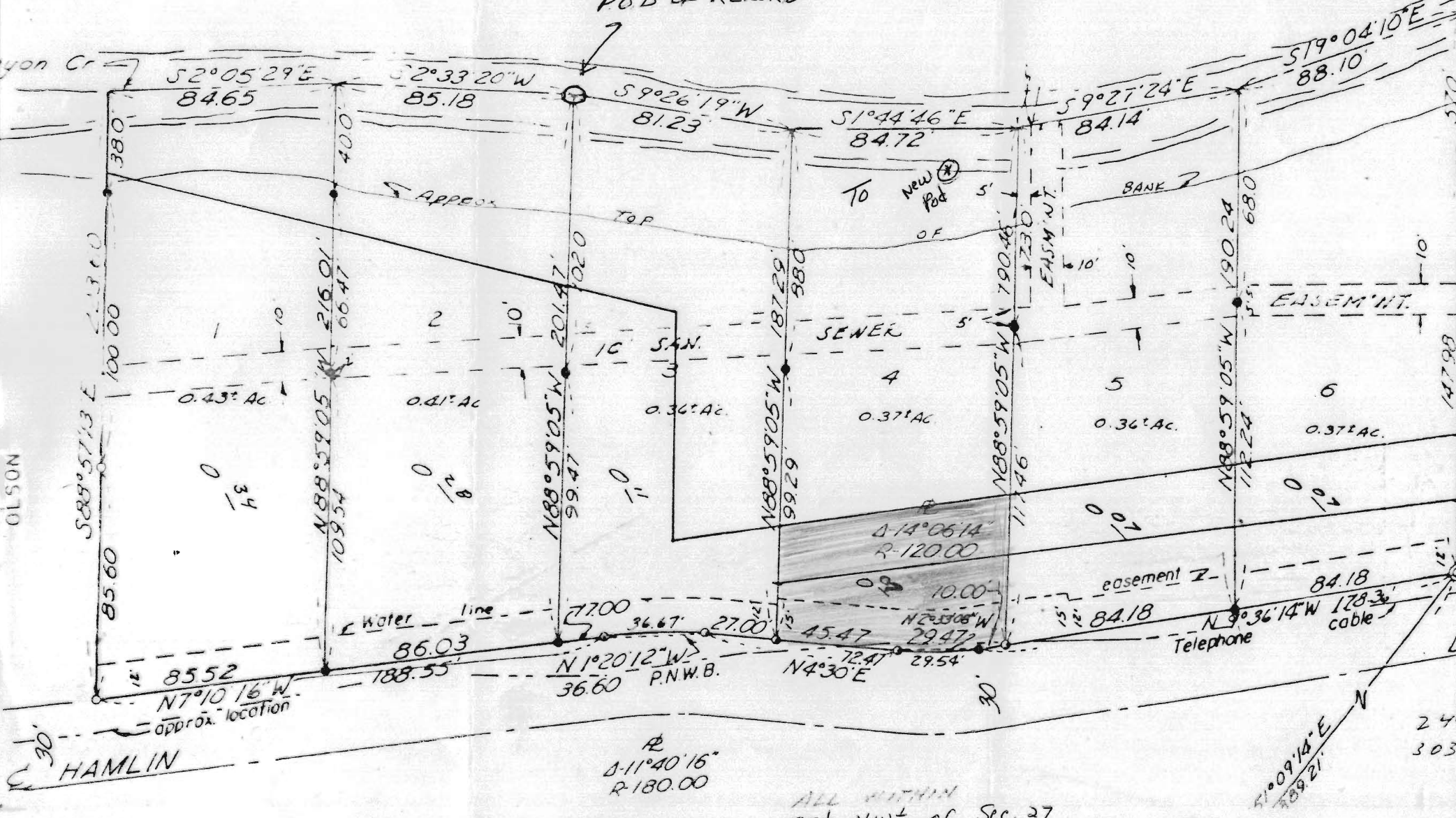
Ecsed on west R/W line HAMLIN DRIVE

Canyon Creek Estates

T.30S, R.5W, Sec. 27

POD: 25'S, 15'E, from  
NW cor of Lot 4, being  
within SE 1/4 NW 1/4 Sec. 27.

FROM  
P.O.D OF RECORD



ALL WITHIN  
SE 1/4 NW 1/4 of Sec. 27

S1°09'18" E  
109.21

244  
303