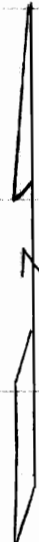
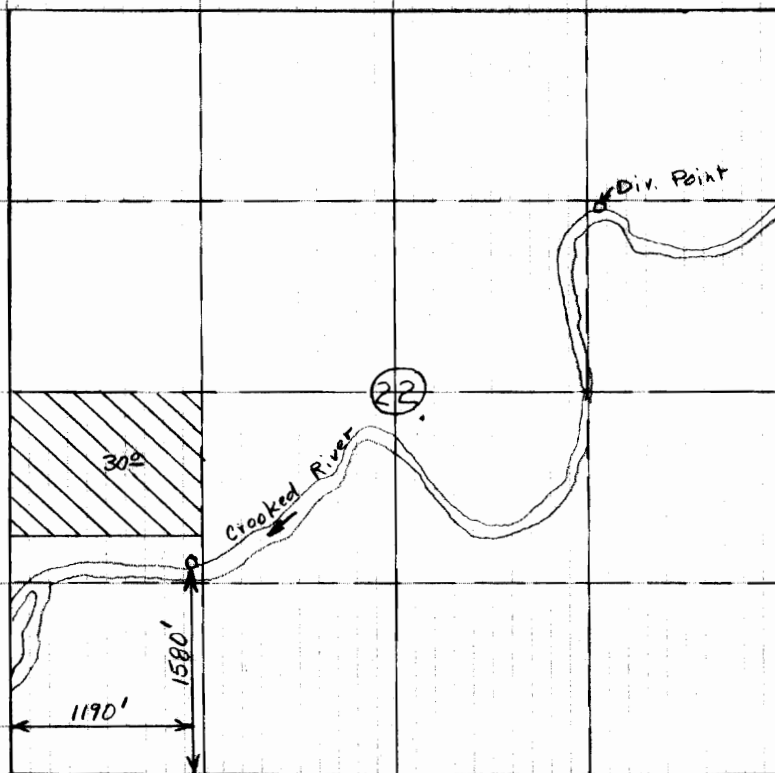


Map to accompany Volney R. Grant
Transfer application
T 14 S R 14 E W.M.



scale 4" = 1 mile

RECEIVED
MAY 1 1978
SOUTH DAKOTA

THIS MAP PREPARED BY:

Harry O. Clark

FROM INFORMATION FURNISHED BY
THE APPLICANT.