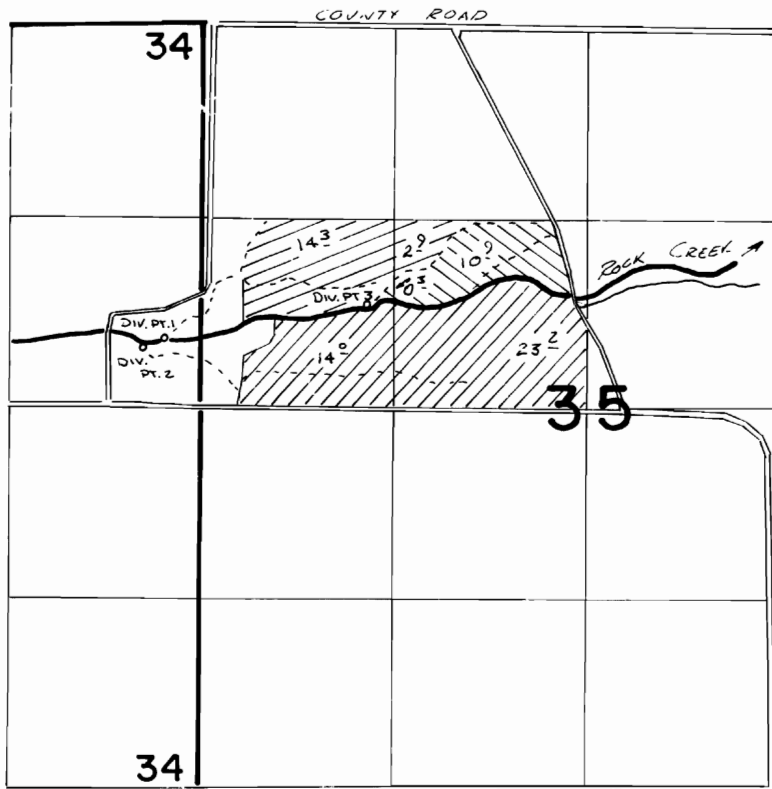


T.7S., R.38E., W. M.



Div. Pt. 1 loc: 460' N. & 250' W. FROM E 1/4 COR. SEC. 34 - TONEY-BLIZE DITCH
 Div. Pt. 2 loc: 400' N. & 400' W. FROM E 1/4 COR. SEC. 34 - FAVORITE DITCH
 Div. Pt. 3 loc: 710' N. & 1130' E. FROM W 1/4 COR. SEC. 35 - TONEY DITCH

FINAL PROOF SURVEY




UNDER

TRANSFER 3925

IN NAME OF

DONALD STEPHENS

Surveyed April 13 1982, by J. B. Church

-  Div. Pt. 3
-  Div. Pt. 2
-  Div. Pt. 1