

MCKENZIE

HIGHWAY

FORKED BUTTE

SCALE:
4" = 1 MILE

T-9351

REDMOND MUNICIPAL RESERVOIR

Chlorination Plant

3.0 AC.
HORN OFF

CANAL

PILLOT BUTTE

HIGHWAY

RAILROAD

RECEIVED

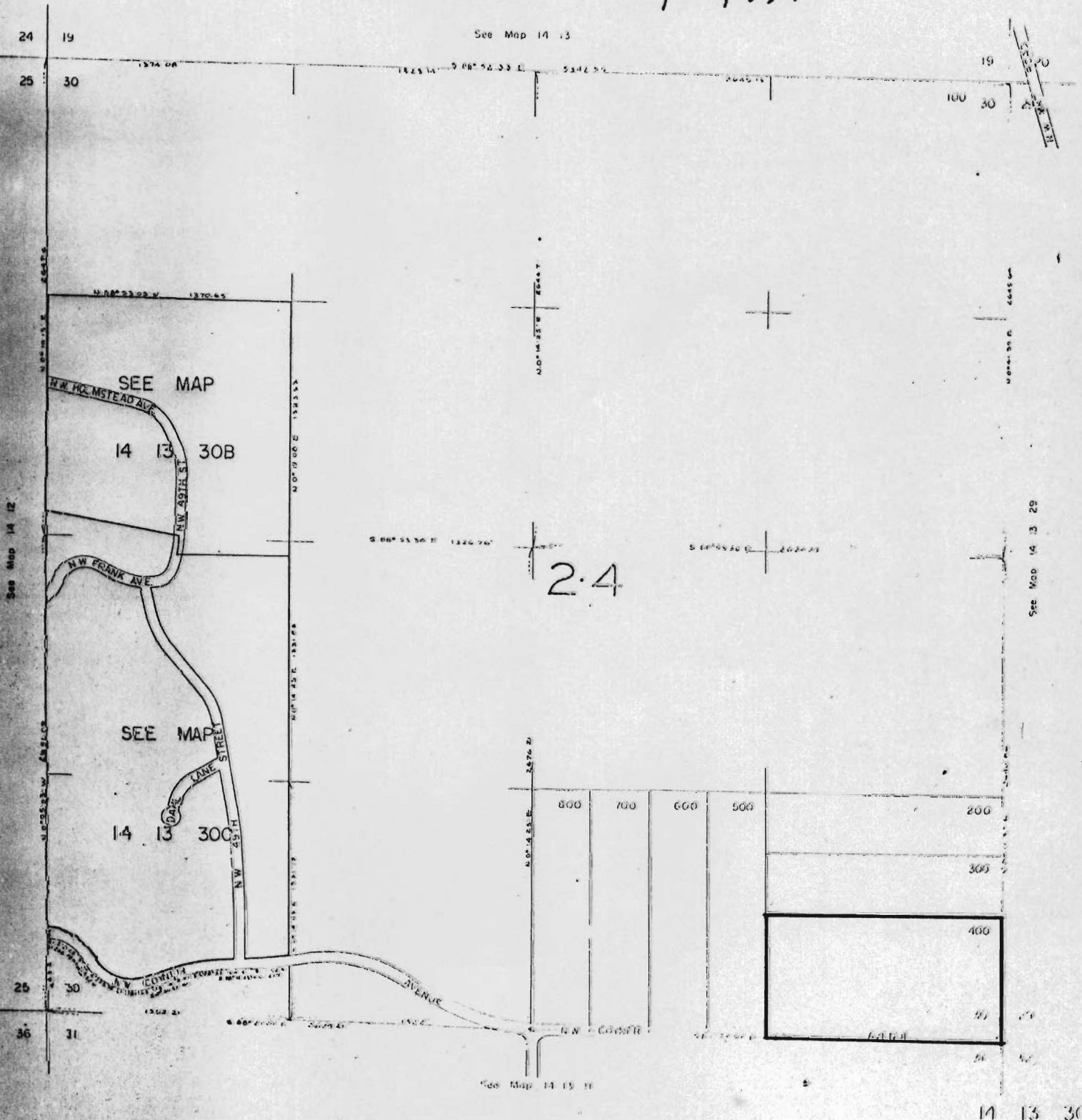
DEC 21 1979

14 13

SECTION 30 T14S. R13E. W.M.
DESCHUTES COUNTY
1" = 400'

WATER RESOURCES DEPT/
SALEM, OREGON

T-4351



14 13 30

Slower/Newton Jr.
30-14-13

19

25⁰

17⁰

37⁰

20

27⁰

28⁰

16⁴

Above ditch

Above ditch

Flum from road

T-4351

SCALE:
4" = 1 MILE

30

Slower/Newton

29

3.9 ACRES
ON

22⁰

18⁶

11⁰

36⁰

32²

11

141

LOT 1

341

17⁰

34²

35⁹

28⁹

LOT 2

16⁰

19²

27³

25⁵

36²

LOT 3

31

24⁰

5²

20⁶

22⁸

3⁸

LOT 4

24⁸

3⁰

34⁹

18⁶

24²

32