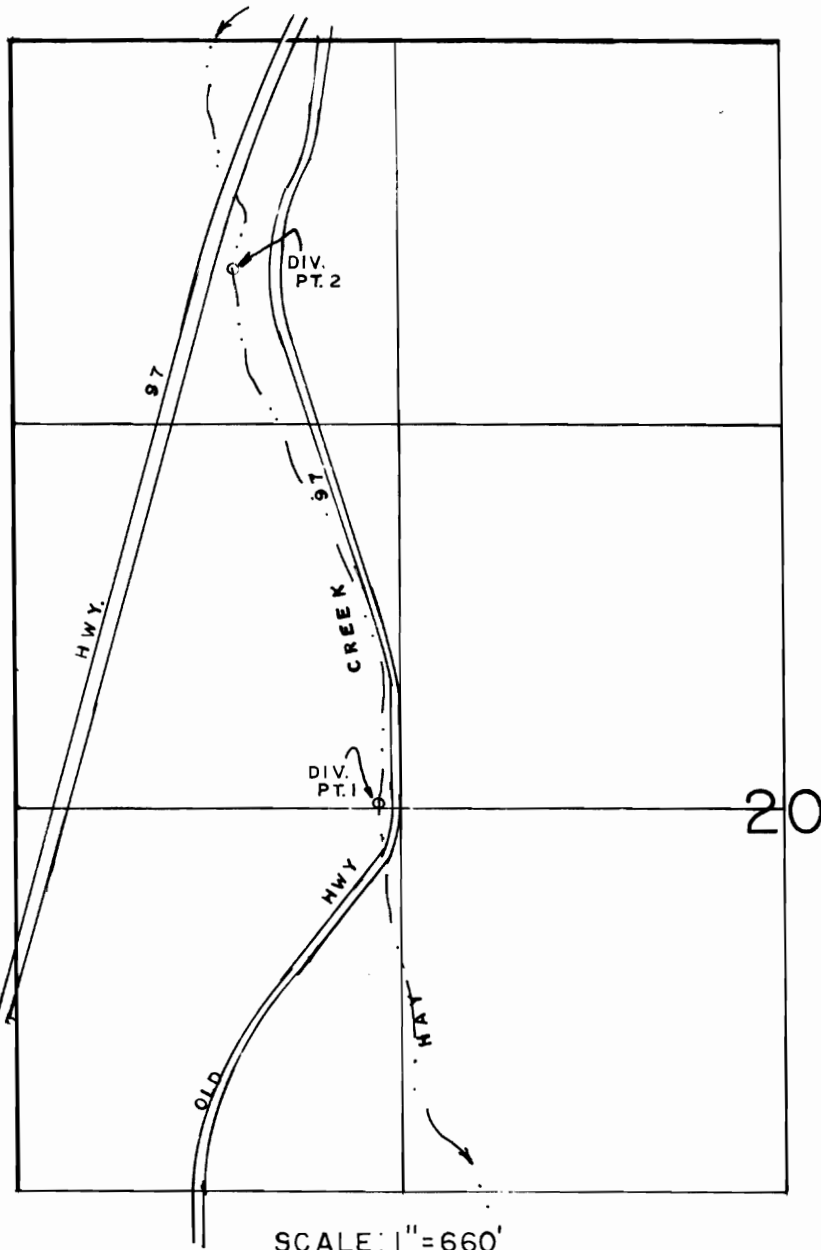


T. 9 S., R. 15 E., W.M.



DIV. PT. 1 40' N & 1260' W
FROM CEN SEC COR.
DIV. PT. 2 710' S & 690' E
FROM NW COR. BOTH
FROM SEC 20.

SCALE: 1" = 660'

FINAL PROOF SURVEY

UNDER

TRANSFER No. 4370

IN NAME OF

FLOYD BAUER

Surveyed MARCH 3, 1994, by R.M. SUTTERFIELD