

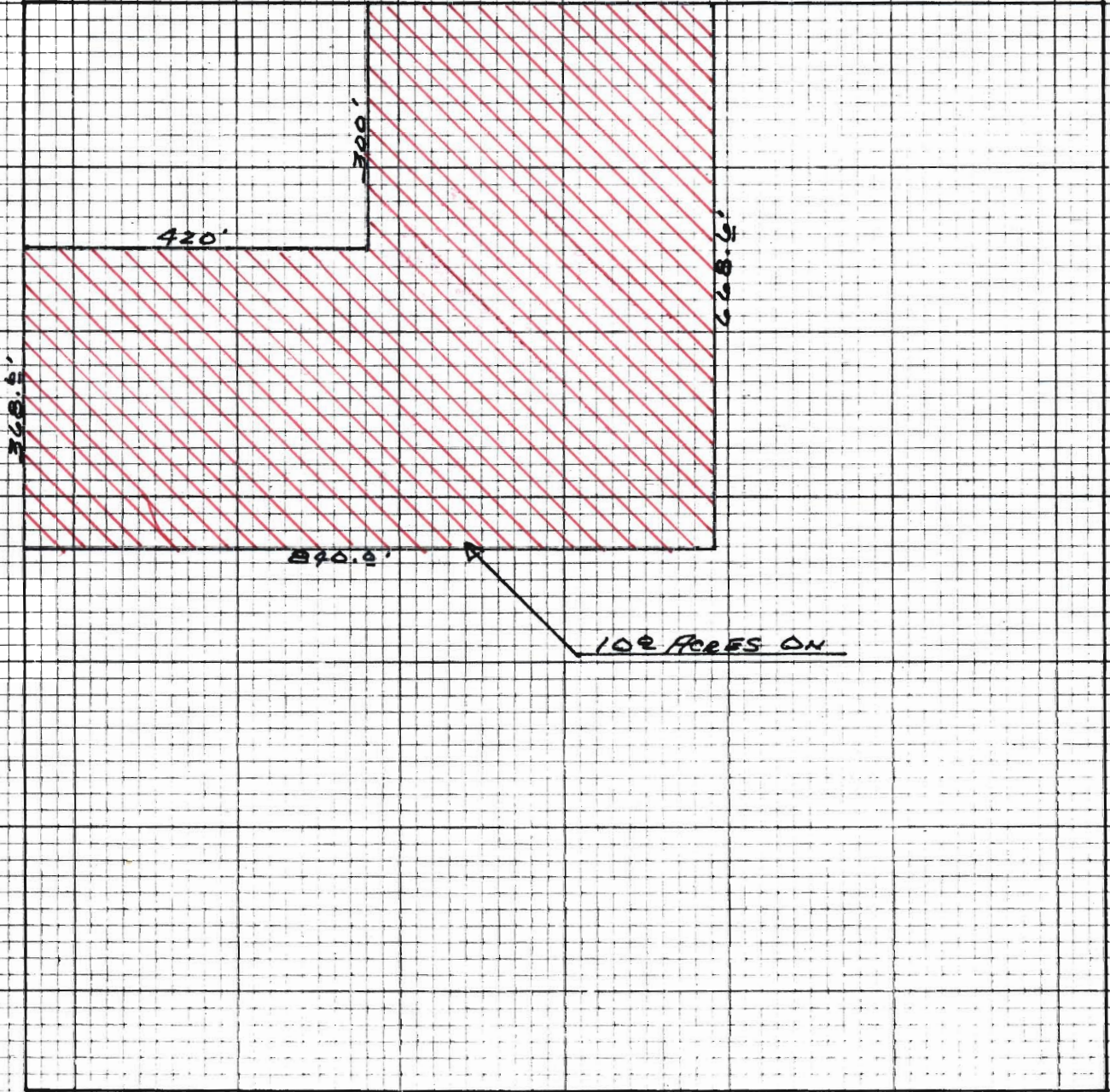
RECEIVED

OCT 0 9 1980

WATER RESOURCES DEPT  
SALEM, OREGON

N1/4-NW1/4 (LOT 1)  
SECTION 18  
T.15S., R.13E11W

SCALE 1" = 200'



RECEIVED

FEB 6 1980

WATER RESOURCES DEPT  
SALEM, OREGON