

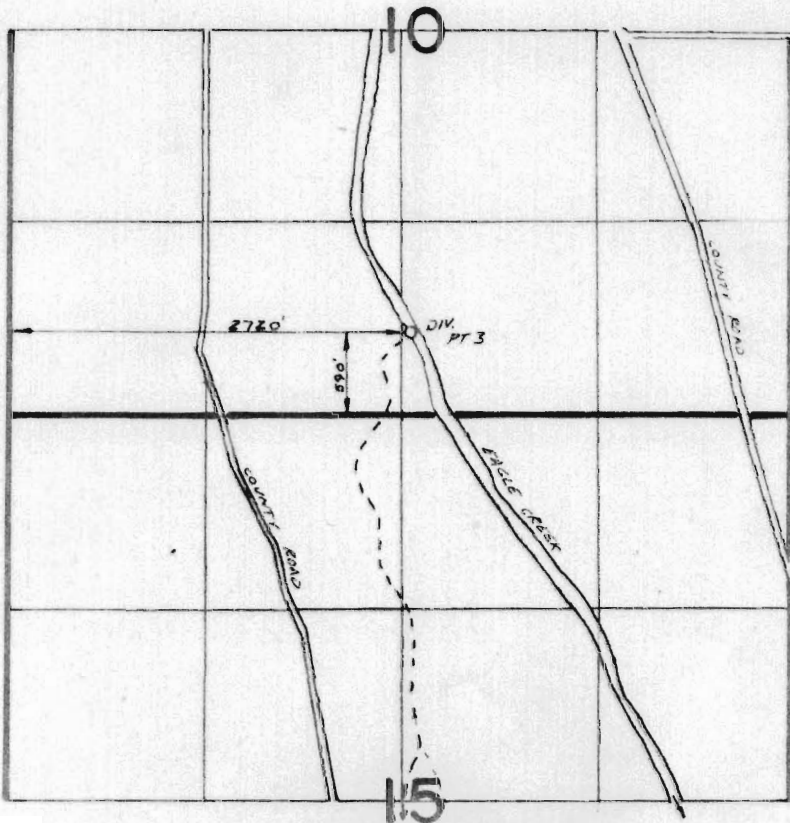
T-4392

RECEIVED

FEB 19 1980

WATER RESOURCES DEPT.  
SALEM, OREGON

T 9S R 45E W.M.



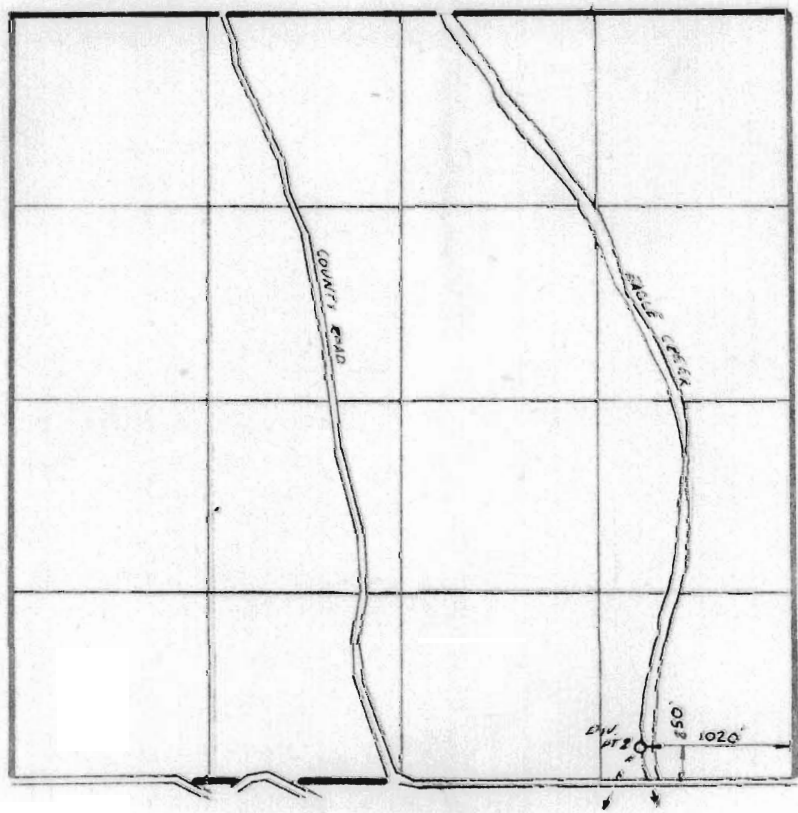
NASH DITCH

From

T-4392

RECEIVED  
FEB 19 1980  
WATER RESOURCES DEPT  
SALEM, OREGON

T 9S R 45E W.M.  
SECTION 15



LITTLE EAGLE DITCH

To