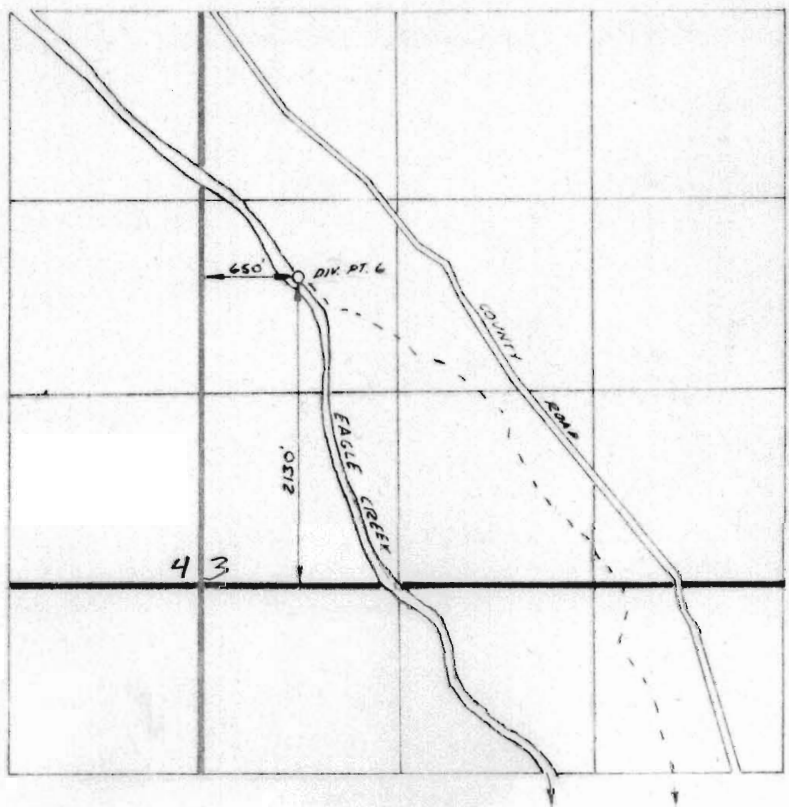


To

T-4403

RECEIVED
FEB 25 1980
WATER RESOURCES DEPT
SALEM, OREGON

T 9S R 45E W.M.
SECTION 3



MOODY DITCH

FROM

T-4403

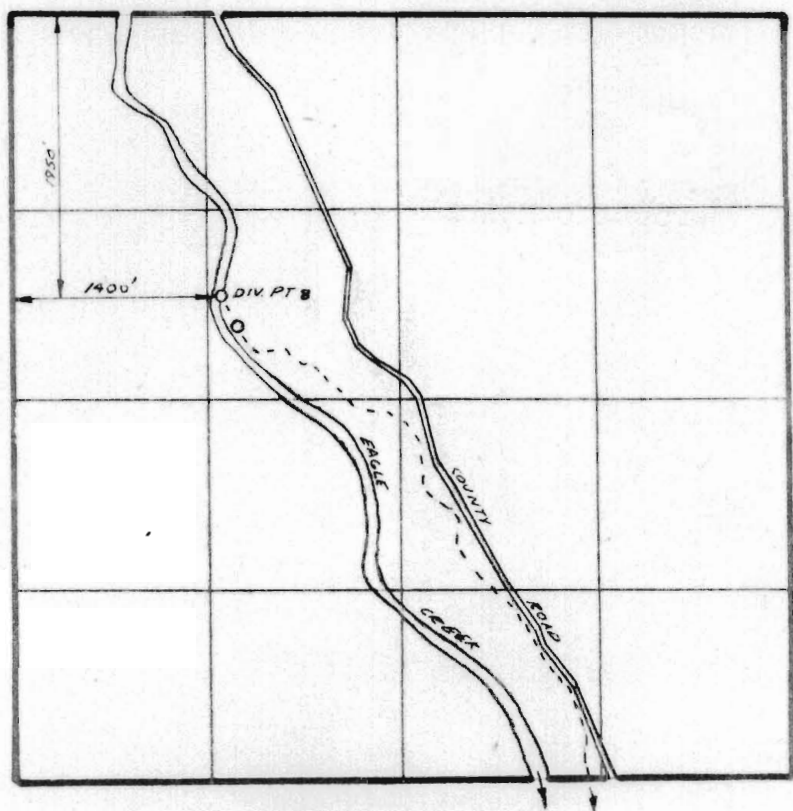
RECEIVED

FEB 25 1980

WATER RESOURCES DEPT
SALEM, OREGON

T 8S R 45E W.M.

SECTION 33



NEWT YOUNG DITCH