

GUY BAGLEY PROPERTY

In

JESSE WOOD D.L.C. No. 75, T. 12 S., R. 6 W., Will. Mer.

Scale: 1 inch = 5 chains

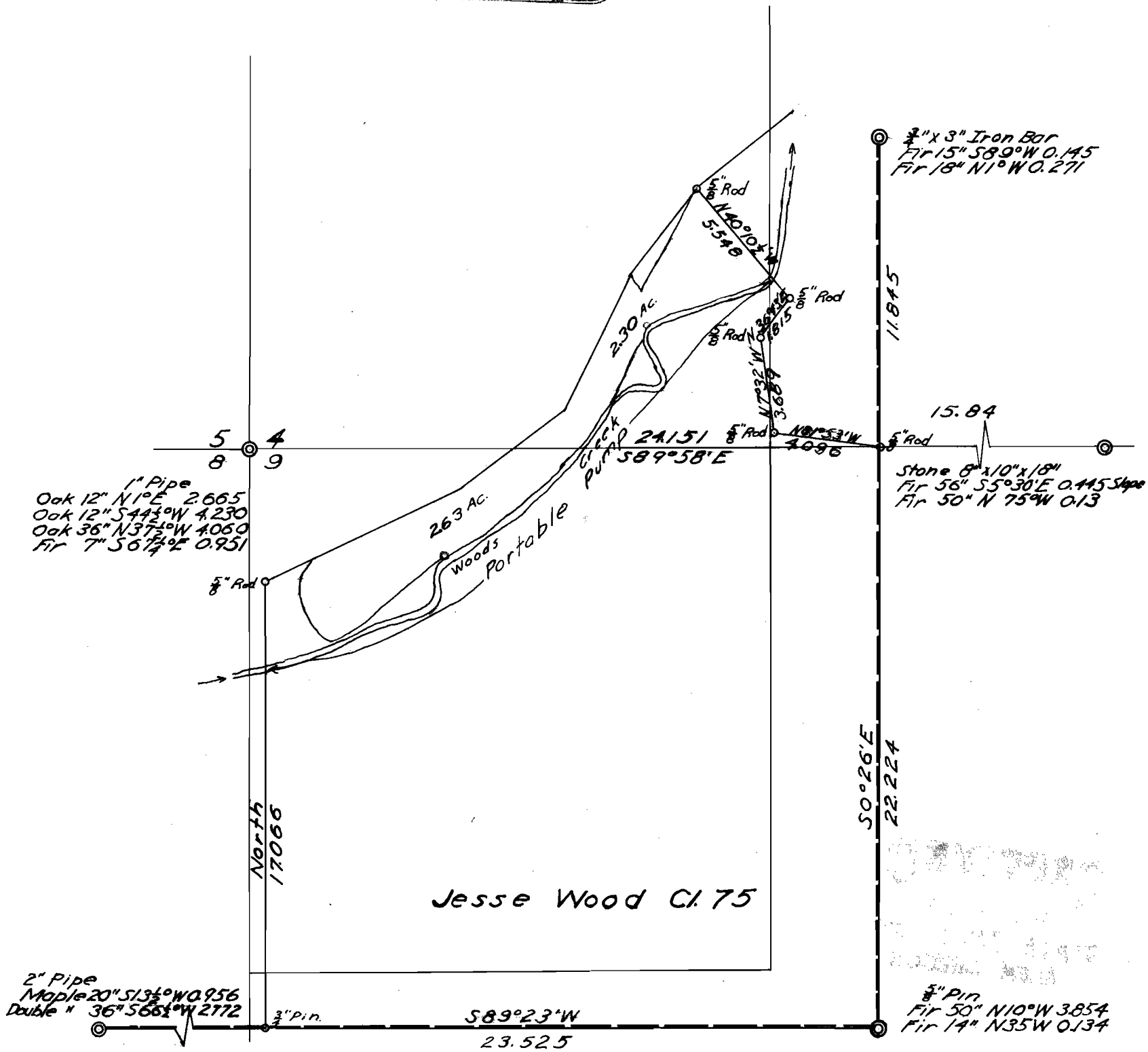
April 14, 1952

I, Curtis C. Hanson, County Surveyor of Benton County, Oregon, hereby certify that this plat was made on April 14, 1952, from maps on file in my office and from County Assessor's aerial photographs and that the monuments are shown on this plat as indicated on said maps.

REGISTERED
OREGON
LAND SURVEYOR

Curtis C. Hanson

NOVEMBER 9, 1945
CURTIS C. HANSON
161



Application No. 25008
Permit No. 20960