

RECEIVED

JUN 9 1980 NW14 SEC. 32 T17S. R13E WM
DESCHUTES COUNTY

WATER RESOURCES DEPT
SALEM, OREGON

1"=200'

See Map 17 13

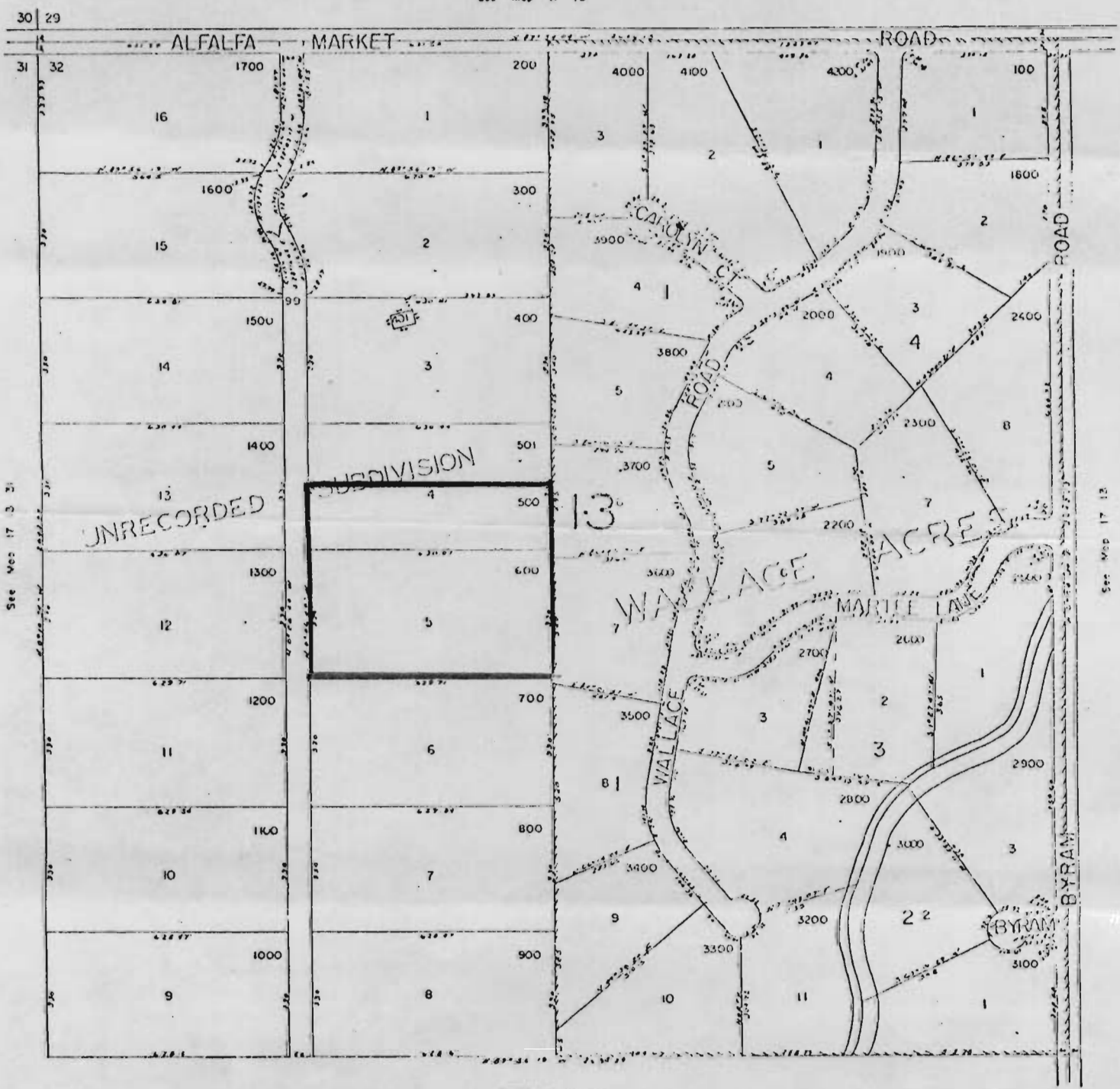
T-4474

RECEIVED

APR 14 1980

WATER RESOURCES DEPT
SALEM, OREGON

17 13 32B



See Map 17 3 21

See Map 17 13

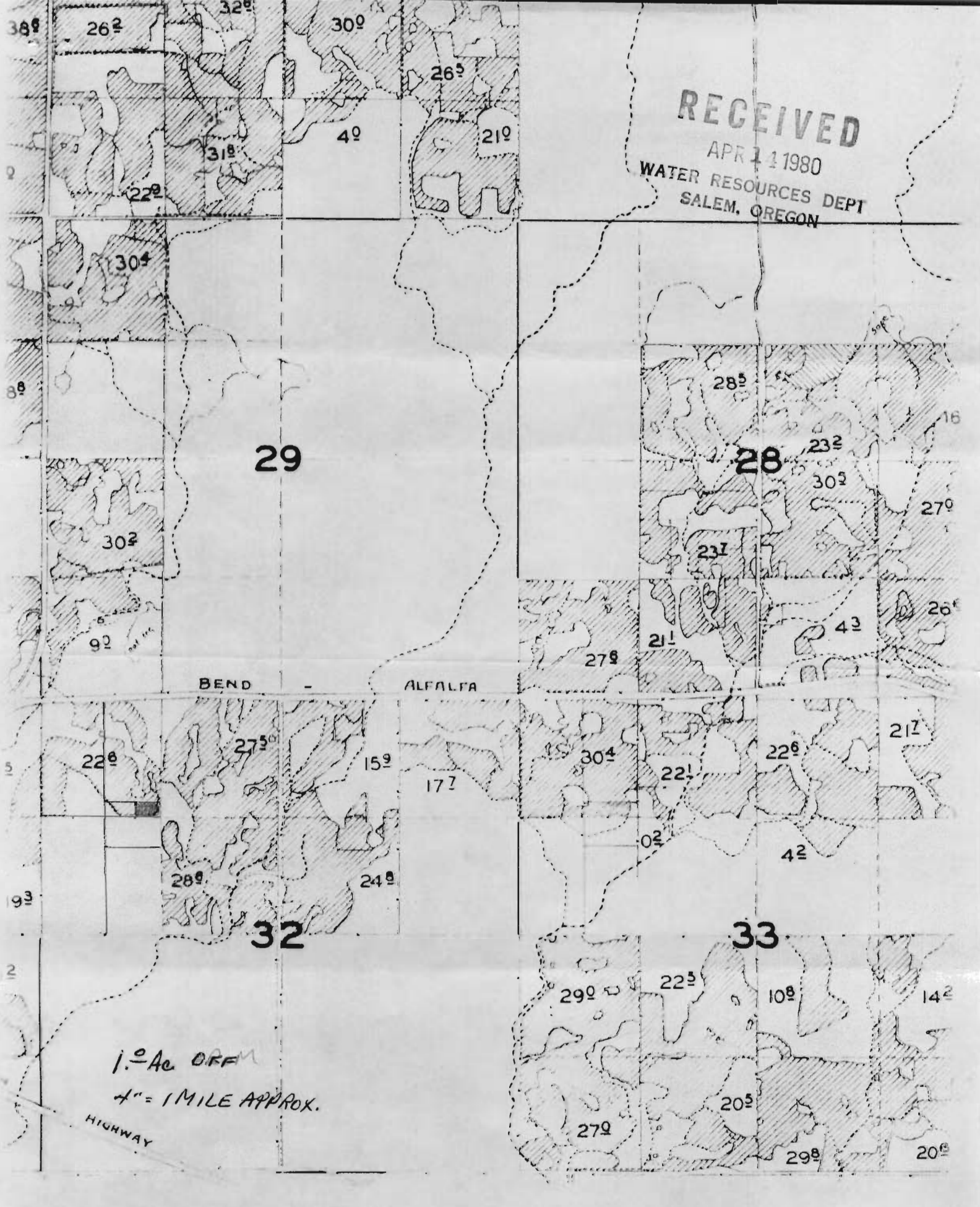
See Map 10 13

17 13 32B

RECEIVED

APR 14 1980

WATER RESOURCES DEPT
SALEM, OREGON



29

28

32

33

BEND

ALFALFA

1.0 Ac ORFM

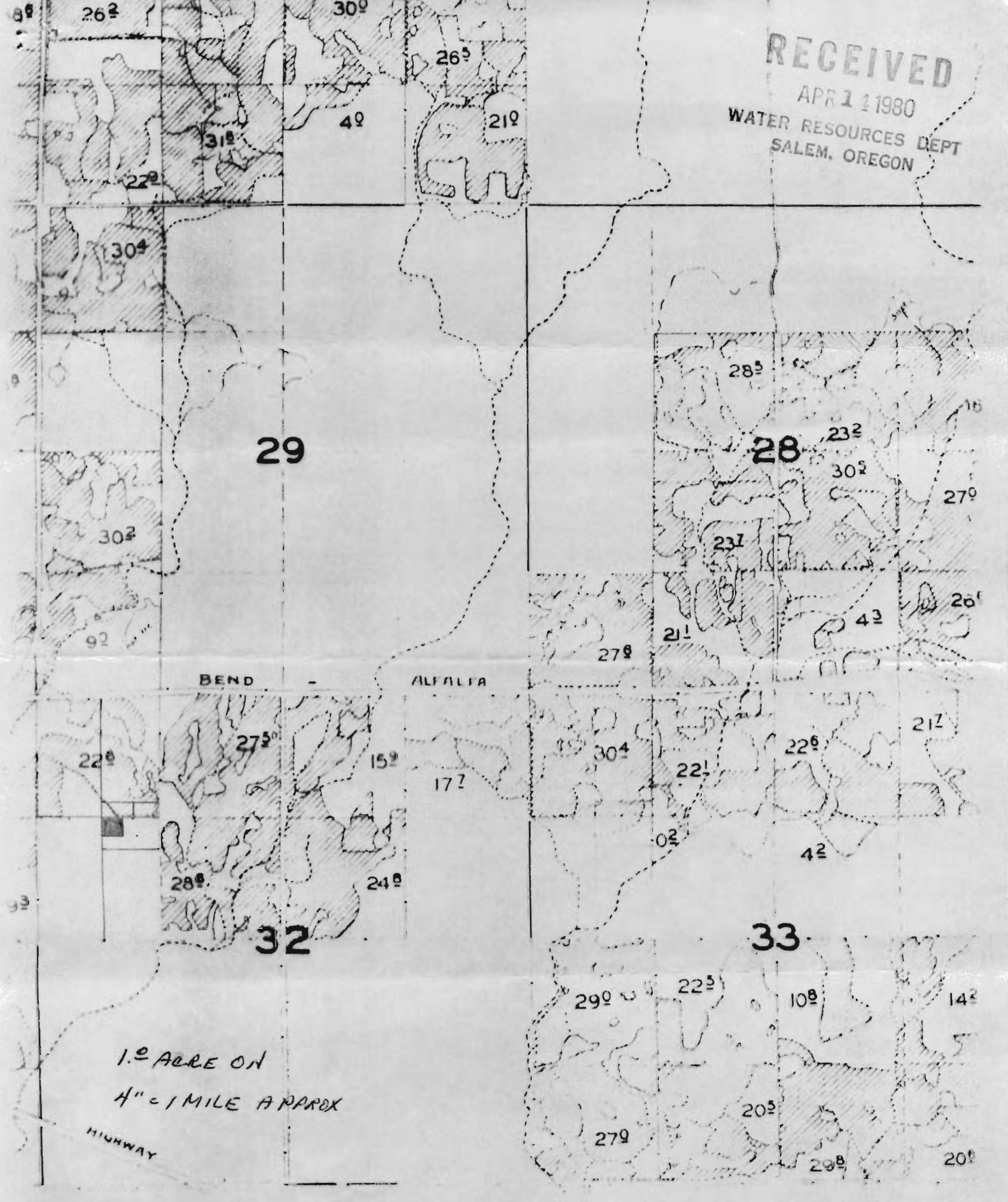
4" = 1 MILE APPROX.

HIGHWAY

RECEIVED

APR 11 1980

WATER RESOURCES DEPT
SALEM, OREGON



1.0 ACRES ON
1" = 1 MILE APPROX

HIGHWAY