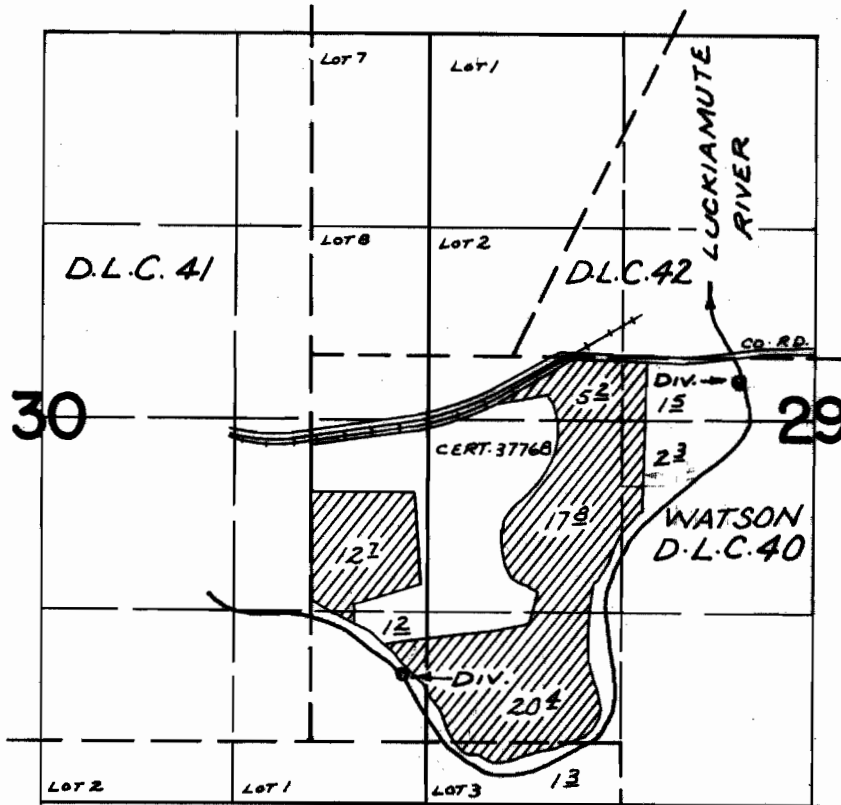


# T.10S.R.6W.W.M.



DIV. PTS. LOC: 170'S. & 2940'E.; 2200'S. & 620'E., BOTH FROM N.W. COR. WATSON D.L.C. 40

## FINAL PROOF SURVEY UNDER

Application No. 46939 Permit No. 35107  
IN NAME OF

*GRACEN L. BUSH*

Surveyed NOV. 6, 1974, by L. M. TOLL