

RECEIVED
OCT 23 1980
WATER RESOURCES DEPT
SALEM, OREGON

T-4624

15

14

POWELL BUTTE

300 385 394 384 400 400 145
298 385 400 400 400 400 392
100 385 394 394 394 394 382

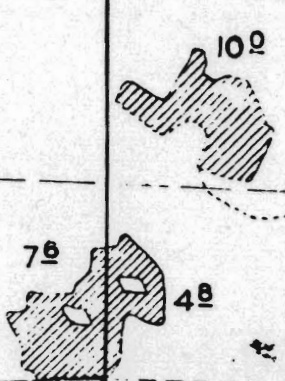
1 Acre ON

1.30 ACRES ON

3.0 ACRES OFF

22

23



265 380 380 394 394 388 388
308 375 382 390 387 400 400 394 368
391 378 371 382 382 390 391 385 380
ALFALFA

COUNTY GRAVE PIT

310 375 387 164 367 382 344 247
394 318 338 328 388 105 10

27

STOC

02

T-4624

RECEIVED
OCT 23 1980
WATER RESOURCES DEPT
SALEM, OREGON

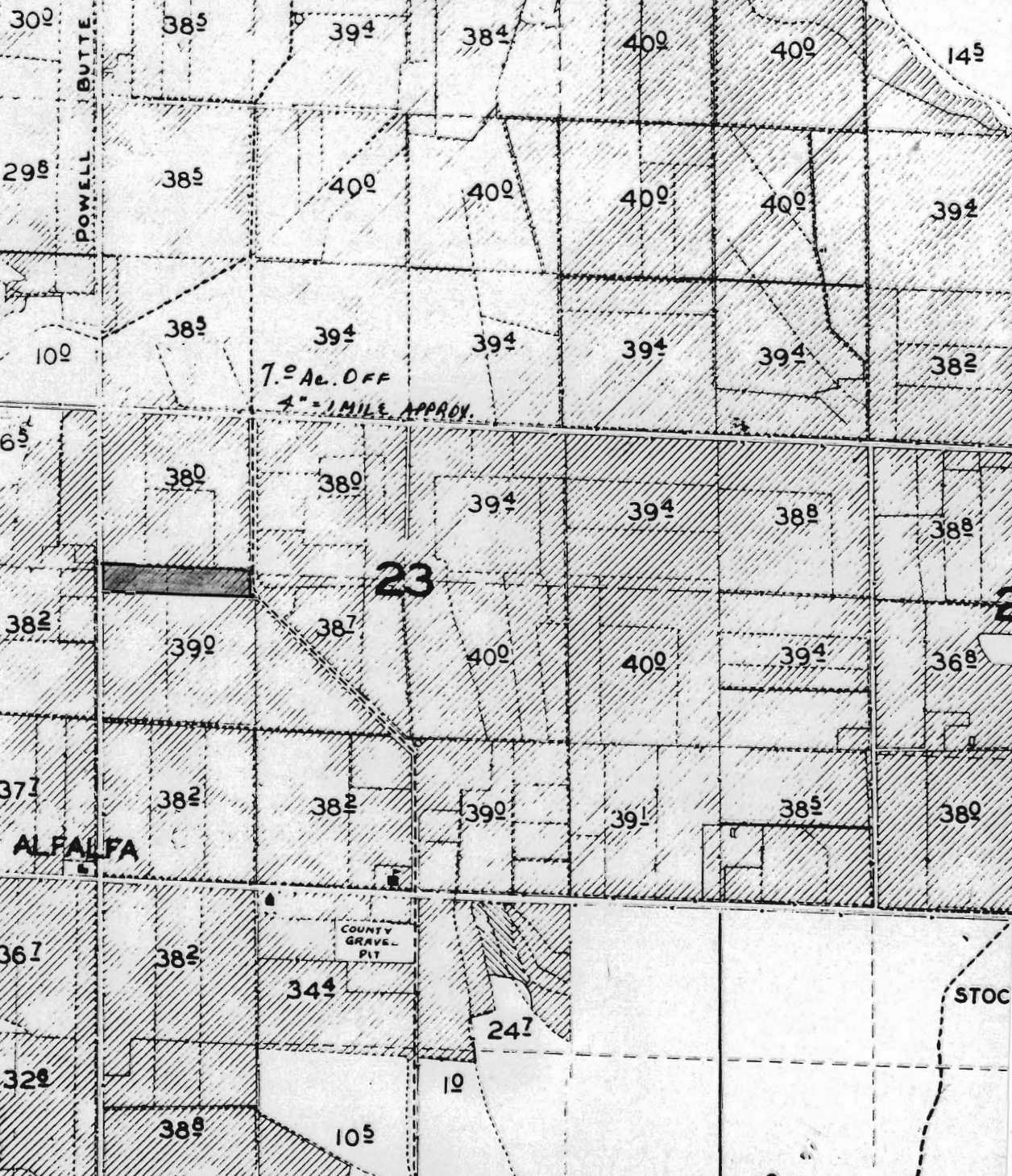
15

14

15

POWELL BUTTE

7.0 AL. OFF
4" = 1 MILE APPROX.



22

23

24

27

28

02

76

48

309

375

382

390

387

400

400

394

368

391

376

371

382

382

390

391

385

380

310

375

387

164

367

382

344

247

394

318

338

328

388

105

10

STOC