

SECTION 18 T.17S. R.13E.
DESCHUTES COUNTY

1"=400'

F-4713

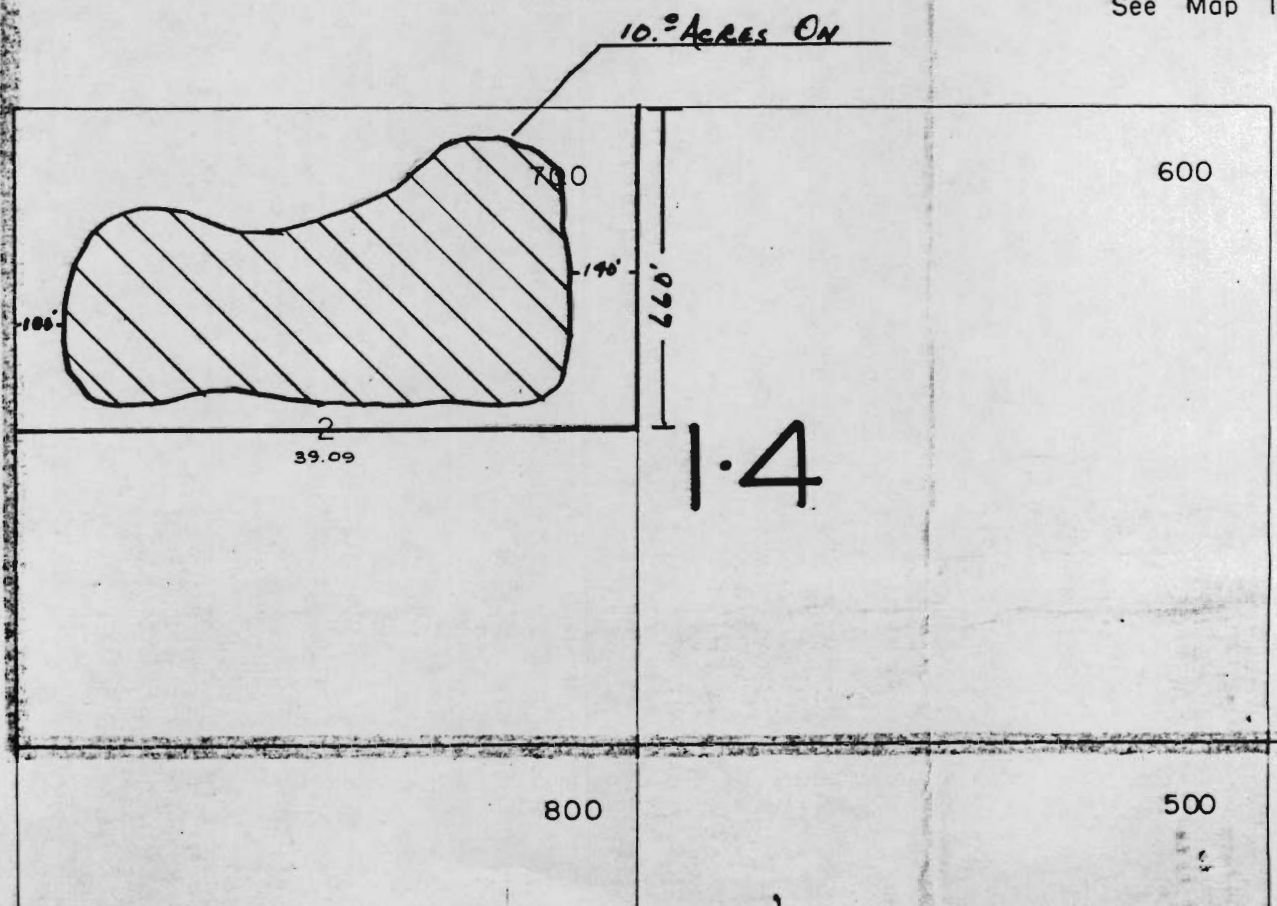
RECEIVED

MAR 18 1982

WATER RESOURCES DEPT
SALEM, OREGON

12 7
13 18

See Map 17 13



See Map 17 12

F4713

RECEIVED

MAR 18 1982

WATER RESOURCES DEPT
SALEM, OREGON

10° ACRES ON

4" = 1 MILE APP.

