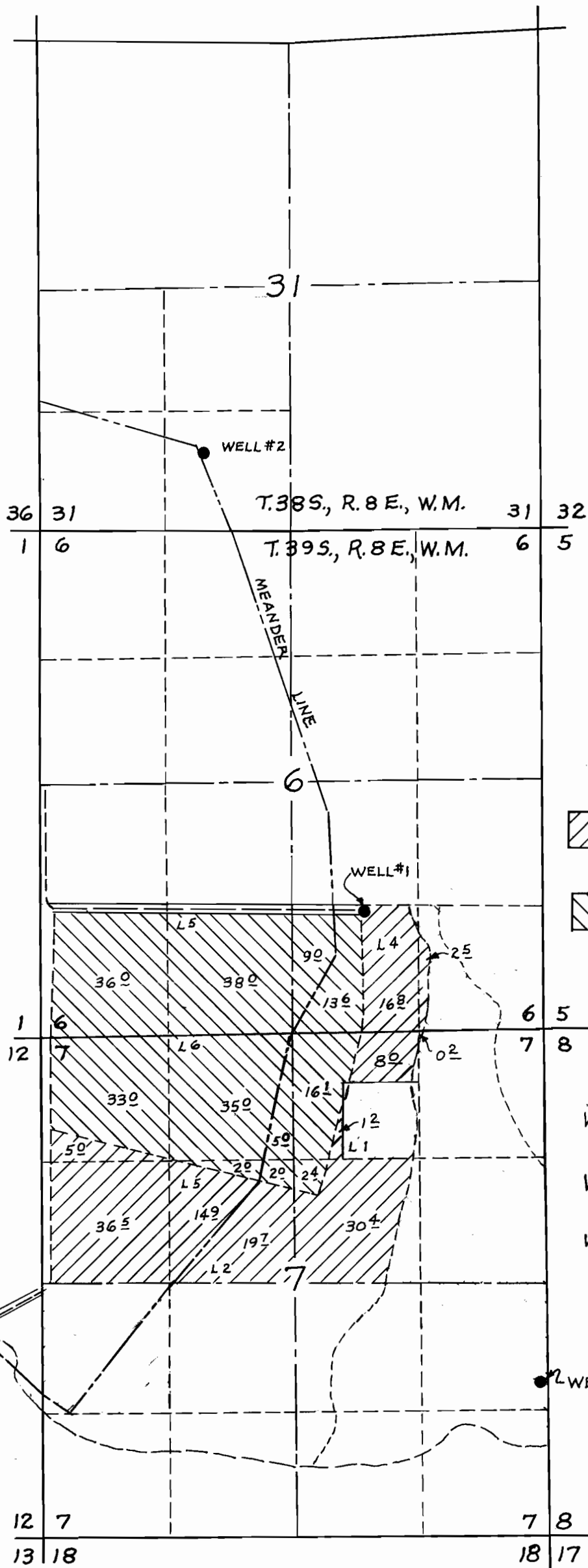

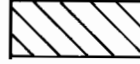


ROUND LAKE



-  Supplemental irrigation from Well #1 & Well #2 (Irrigation from Well #3 to be discontinued.)
-  Supplemental irrigation from Well #2 (Irrigation from Well #3 to be discontinued.)

WELL LOCATIONS

- Well No. 1 ~ 1250' N. & 1880' W from S.E. corner Sec. 6
- Well No. 2 ~ 820' N. & 900' W. from N¹/₄ Cor. Sec. 6
- Well No. 3 ~ 1030' S. & 70' W. from E¹/₄ Corner Sec. 7

REVISED 2/6/80



MAP SHOWING LANDS TO BE IRRIGATED BY
ROBERT T. MORRIS
 IN
 SECTIONS 6 & 7, T. 39 S., R. 8 E., W.M.
 KLAMATH COUNTY, OREGON
 Scale: 1" = 1320'
 Map prepared by: **WILLIAM L. WALES & Associates**
 Consulting Engineers
 Klamath Falls, Oregon
 July, 1979