

SW1/4 SE1/4 SEC. 24 T.5N. R.26E. W.M.  
MORROW COUNTY

1" = 100'

RECEIVED

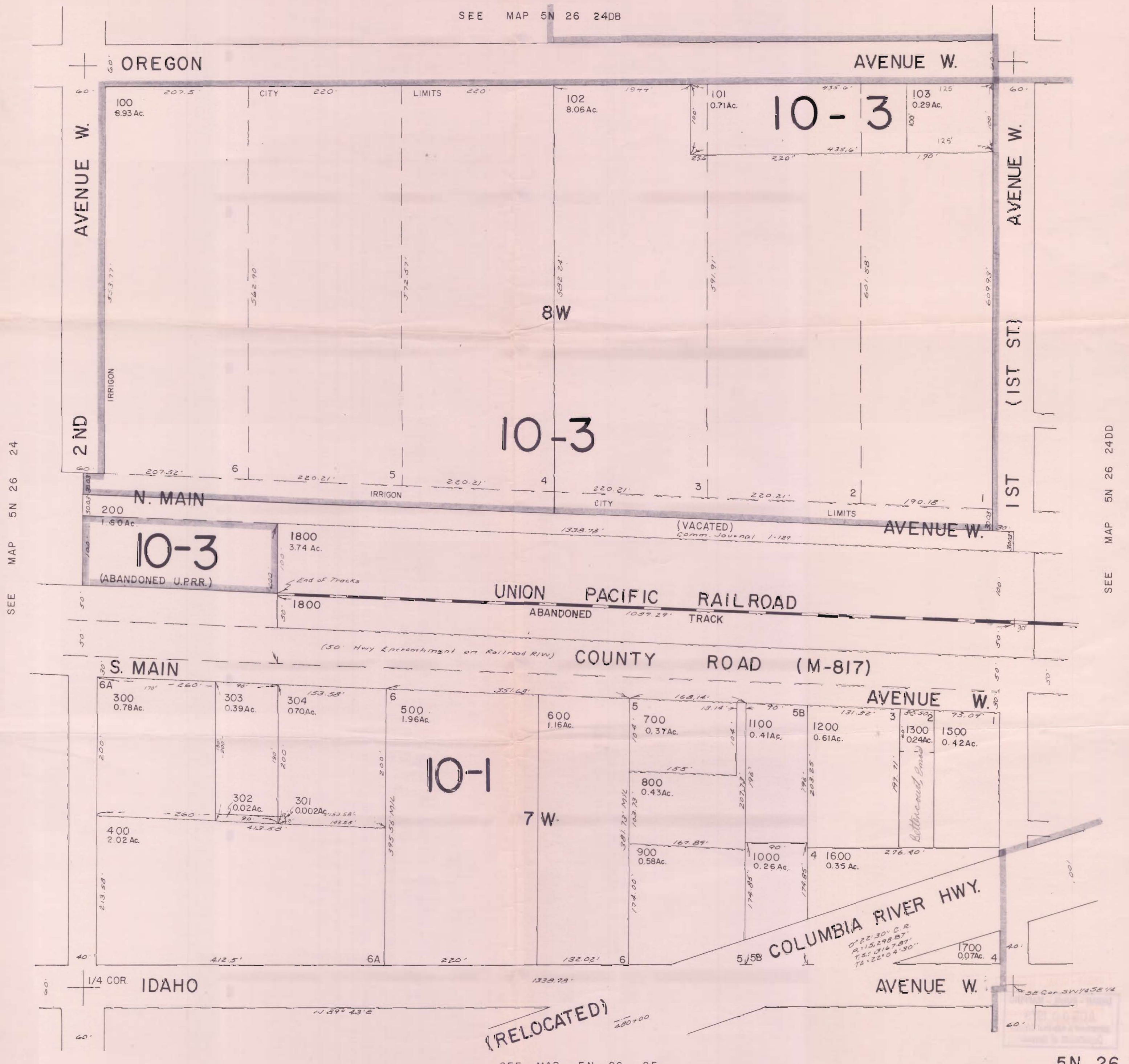
OCT - 1979

5N 26 24 DC

WATER RESOURCES DEPT  
SALEM, OREGON

CANCELLED NO.  
1400

SEE MAP 5N 26 24DB



SEE MAP 5N 26 24

SEE MAP 5N 26 24DD

(RELOCATED)

SEE MAP 5N 26 25

5N 26 24DC