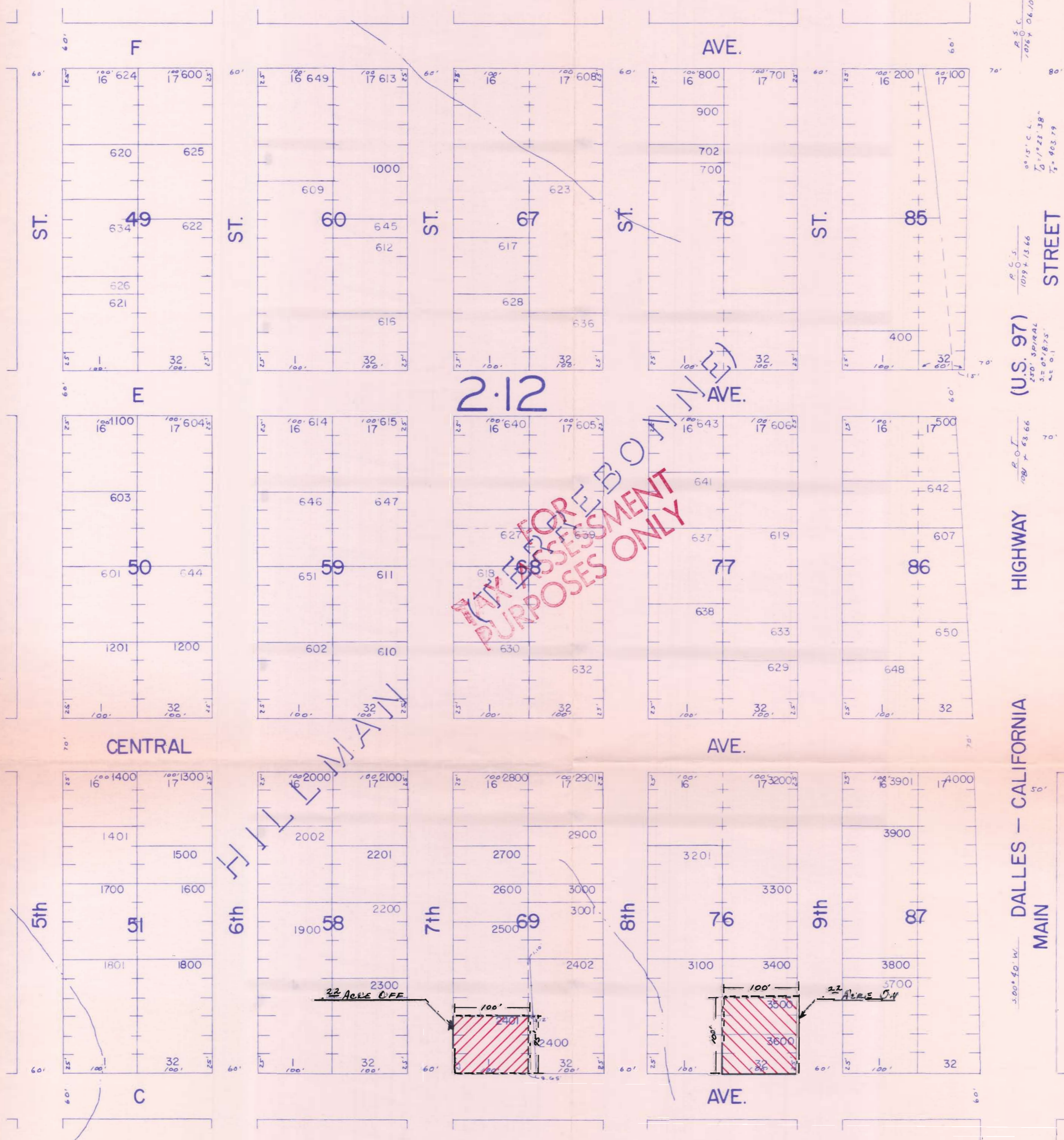


T-4429

RECEIVED
MAY 17 1980
WATER RESOURCES DEPT
SALEM, OREGON



2.12

TAX FOR EBO
ASSESSMENT
PURPOSES ONLY

HILTMAN

22 ACRE OFF

22 ACRE OFF

P. S. C.
1076 x 06.10

P. S. C. L.
1076 x 06.10

P. S. C.
1076 x 13.66

(U.S. 97)
240' SPIRAL
3.5' 0" 18.75'
4.5' 0" 1

P. S. C.
1076 x 63.66

HIGHWAY

DALLES - CALIFORNIA
MAIN

3.00' 40' W

See Map 14 13 16 C B

See Map 14 13 16 D B