

River = 10, 20, 30
 Hanson 3524 11.5
 this transfer .5

RECEIVED
 JUL 13 1980
 WATER RESOURCES DEPT
 SALEM, OREGON

SECTION 16 T.16S. R.12E.W.M.
DESCHUTES COUNTY

1"=400'

See Map 16 12 9

T-4761
"TO"

to be transferred
from 16-12-29



1/4

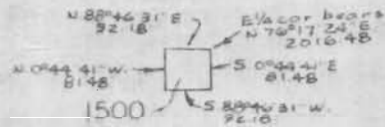
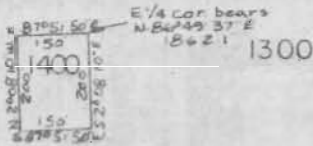
RIVER

2.6

RECEIVED
JUL 13 1980
WATER RESOURCES DEPT
SALEM, OREGON

TAX FOR
ASSESSMENT

2.4



OLD DALLEY N. 10° 14' 48" E CALIFORNIA
S 81° 57' 50" E 400'

SEE MAP
16 12 16D

KREIGER (93RD ST) U. 26° 07' 58" E 264.12'

100 16 15

200

400

100

1100

1200

1700

1800

16

15

See Map 16 12 15