

RECORD OF SURVEY

FOR CITY OF NEWBERG, OREGON

IN The Northwest 1/4 and the Southwest 1/4,
Section 29, Township 3 South, Range 2 West,
Willamette Meridian, Marion County, Oregon
June 2, 1980 Scale 1" = 100'

RECEIVED
JUN 23 1980
WATER RESOURCES DEPT
SALEM, OREGON

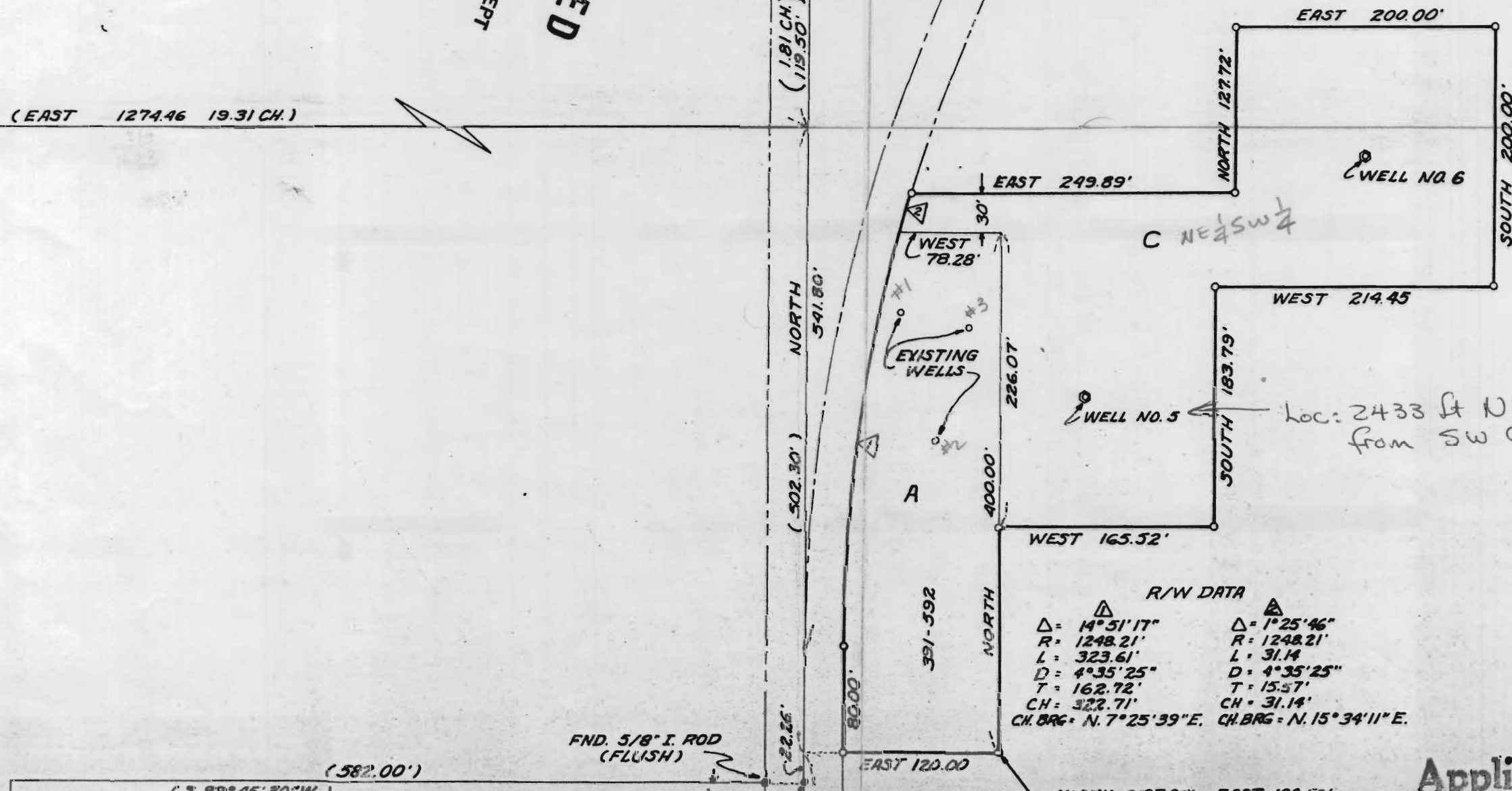
RECEIVED
FEB 9 1981
WATER RESOURCES DEPT
SALEM, OREGON

use this
map as
Final

Σ DATA
Δ = 45° 56' 31"
R = 1278.21'
L = 1024.91'
D = 4° 28' 57"
T = 541.80'
CH = 997.68'
CH BRG = N. 22° 58' 16" E.

R/W DATA
Δ = 14° 51' 17" Δ = 1° 25' 46"
R = 1248.21' R = 1248.21'
L = 323.61' L = 31.14'
D = 4° 35' 25" D = 4° 35' 25"
T = 162.72' T = 15.57'
CH = 322.71' CH = 31.14'
CH BRG = N. 7° 25' 39" E. CH BRG = N. 15° 34' 11" E.

1/4 CORNER NOT FOUND
30 | 29
(EAST 1274.46 19.31 CH.)



FND. 5/8" I. ROD (FLUSH)

Application No. G 9805