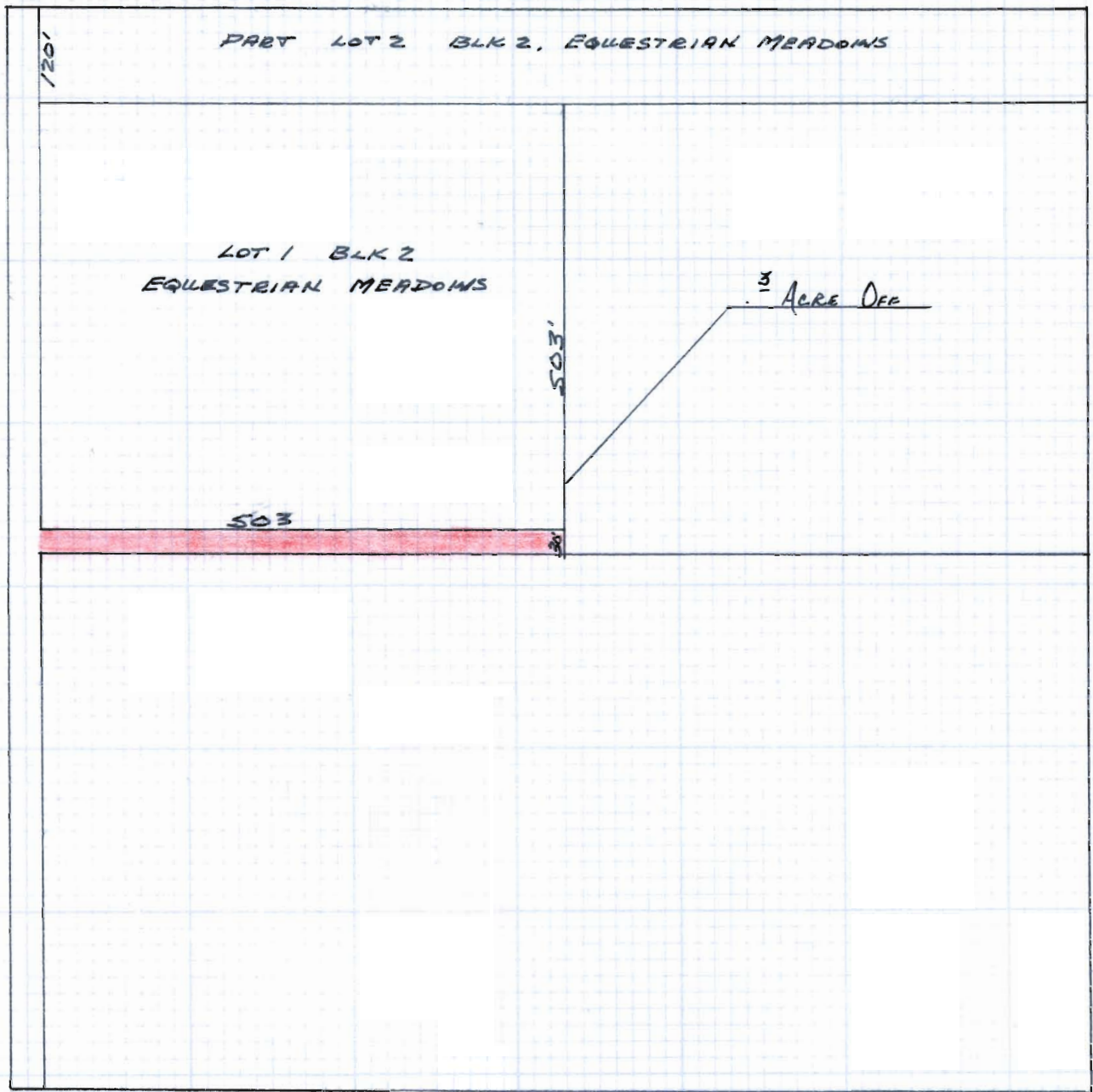


T-4730

SECTION 27, T.14S., R.13E1117
NE 1/4 - NW 1/4

SCALE 1" 200'



RECEIVED

APR 3 1981

WATER RESOURCES DEPT
SALEM, OREGON

T-4730

SECTION 22, T.14S., R.13EWM
NW 1/4 - SE 1/4

SCALE 1" = 200'

PART OF EQUESTRIAN MEADOWS

RECEIVED

APR 3 1981

WATER RESOURCES DEPT
SALEM, OREGON

