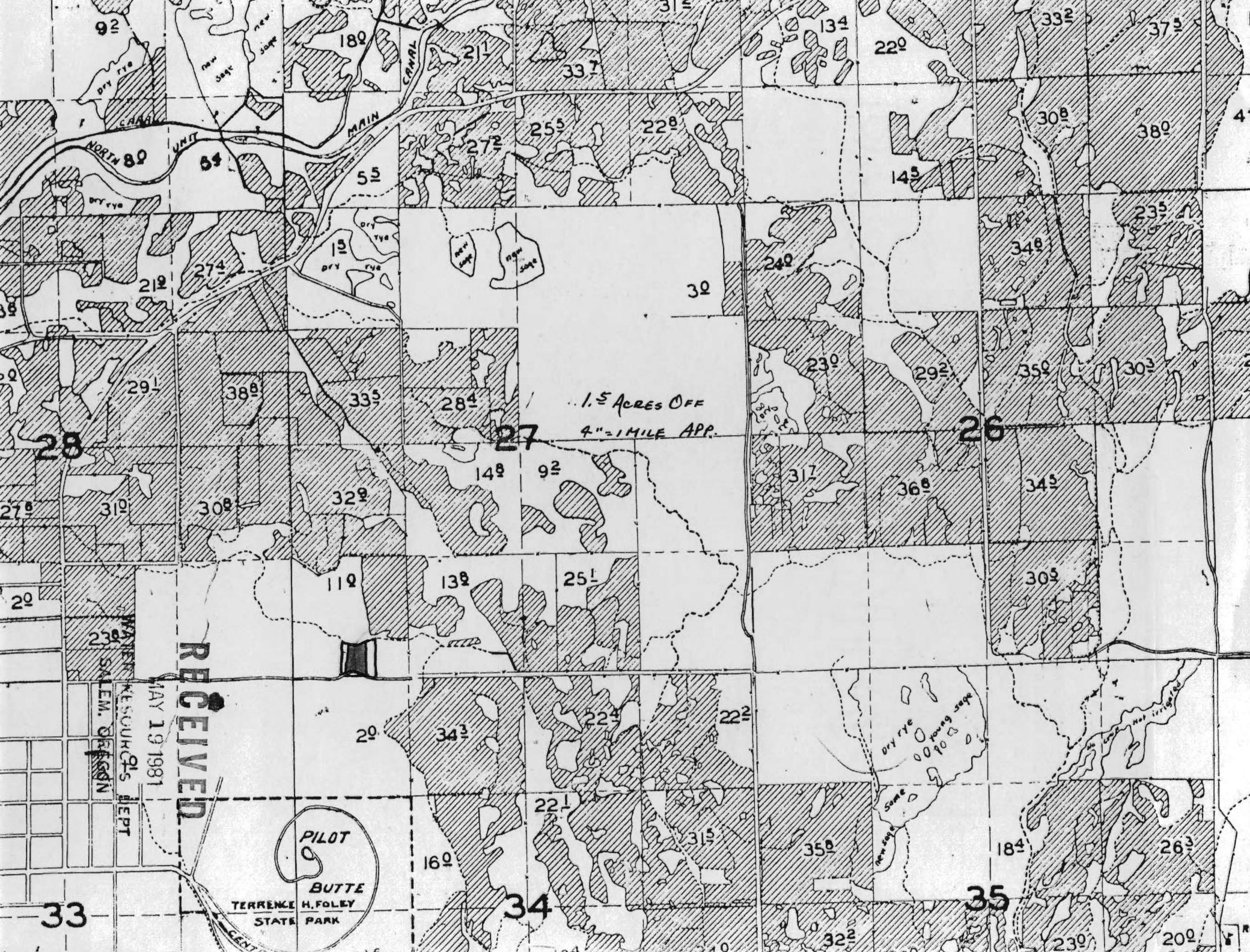


**RECEIVED**  
 MAY 19 1981  
 WATER RESOURCES DEPT  
 SALEM, OREGON

W/R IN DESIGNATED AREA WERE  
 REMOVED BY 6-67

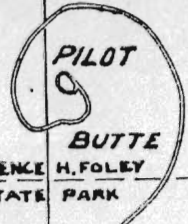


1.5 ACRES OFF  
4" = 1 MILE APP.

RECEIVED

MAY 19 1981

SALEM, OREGON  
MISOURI DEPT



33

34

35

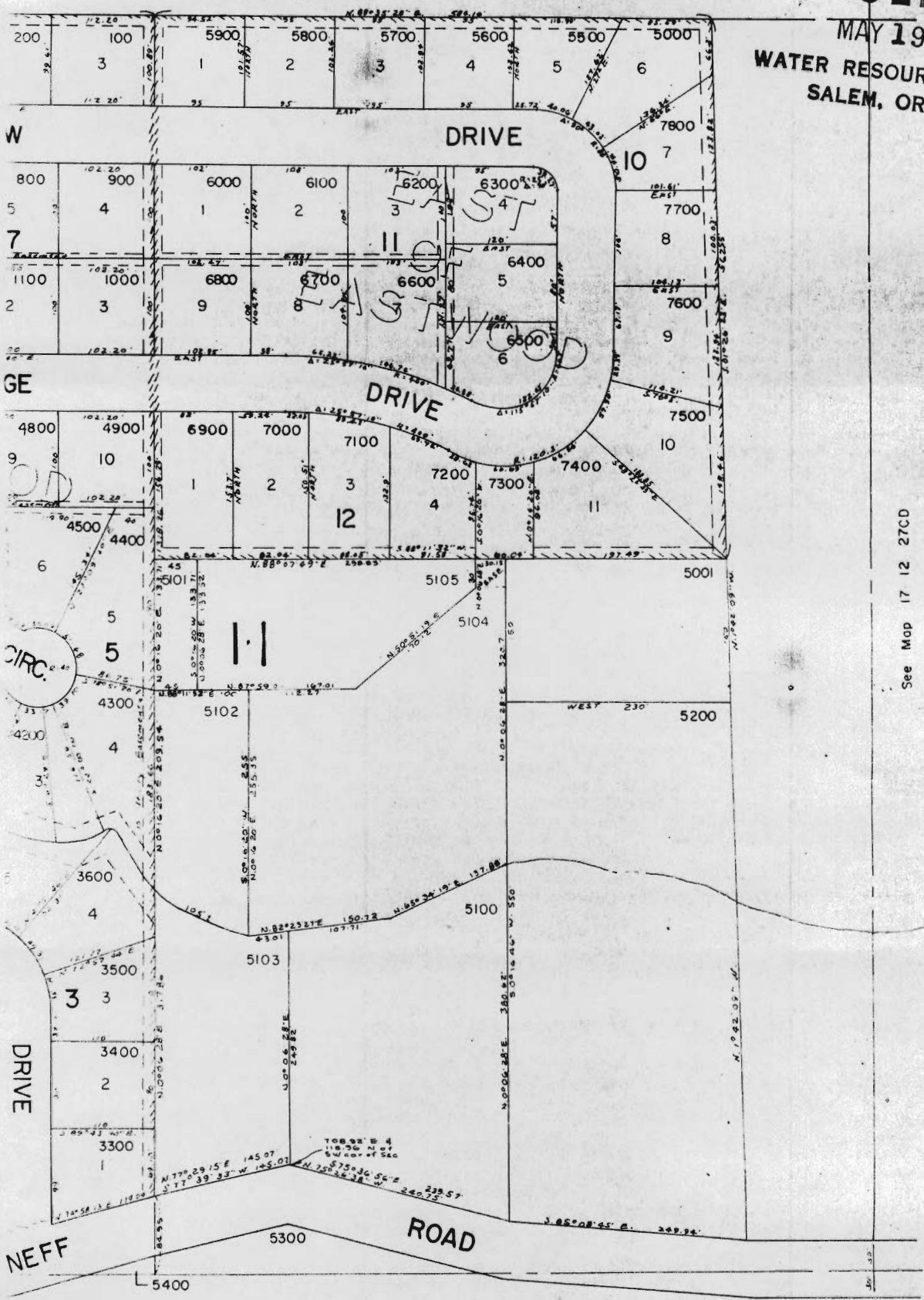
4



RECEIVED

MAY 19 1981

WATER RESOURCES DEPT  
SALEM, OREGON



See Map 17 12 27CD

RECEIVED

MAY 19 1981

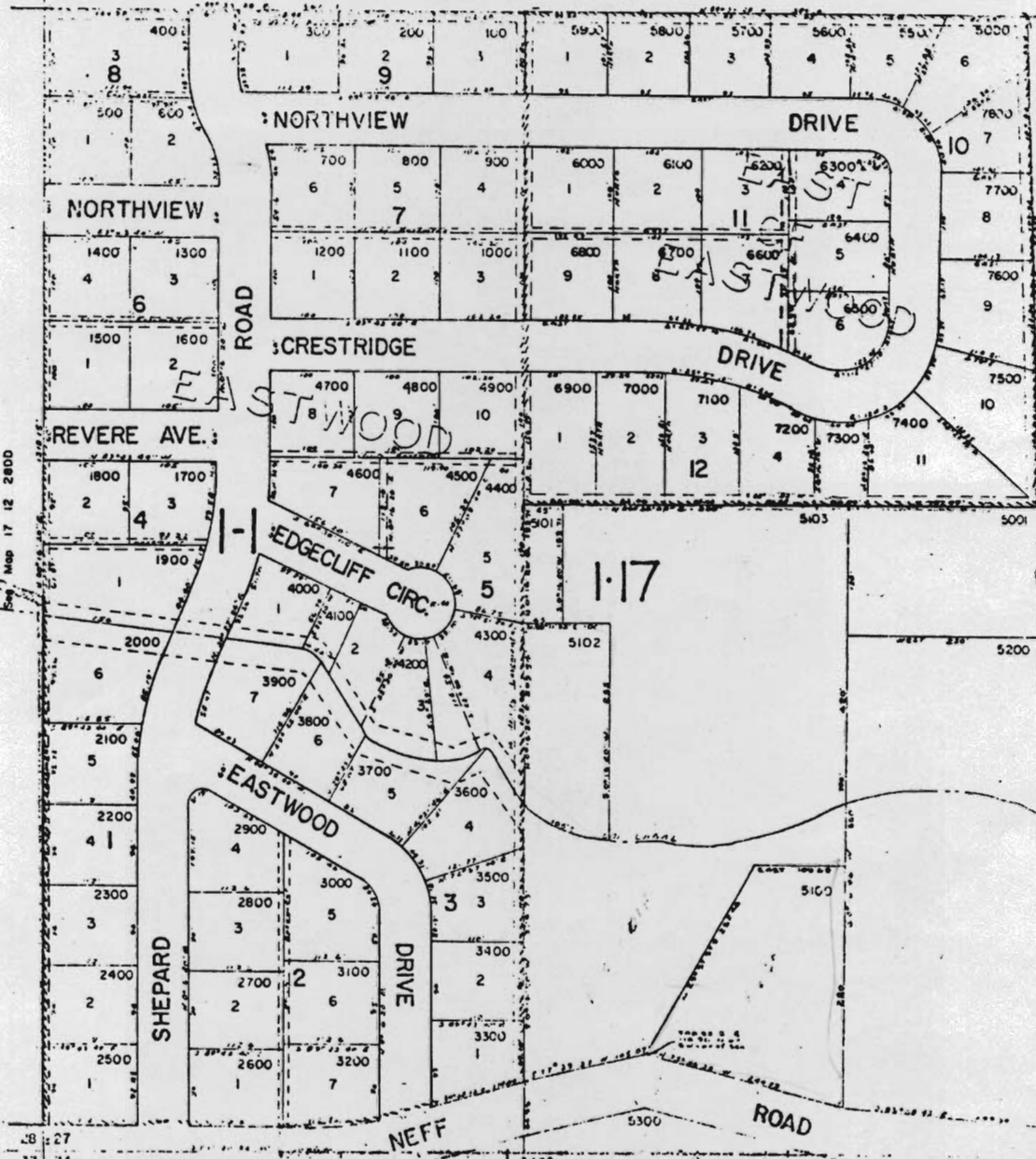
WATER RESOURCES DEPT  
SALEM, OREGON

17 12 2700

SW1/4 SW1/4 SEC 27 T17S. R12E.W1M.  
DESCHUTES COUNTY

1"=100'

See Map 17 12 27CB



See Map 17 12 2800

See Map 17 12 27CD

28 27  
33 34

See Map 17 12 24