

RECEIVED

TP 375, R. 2 E

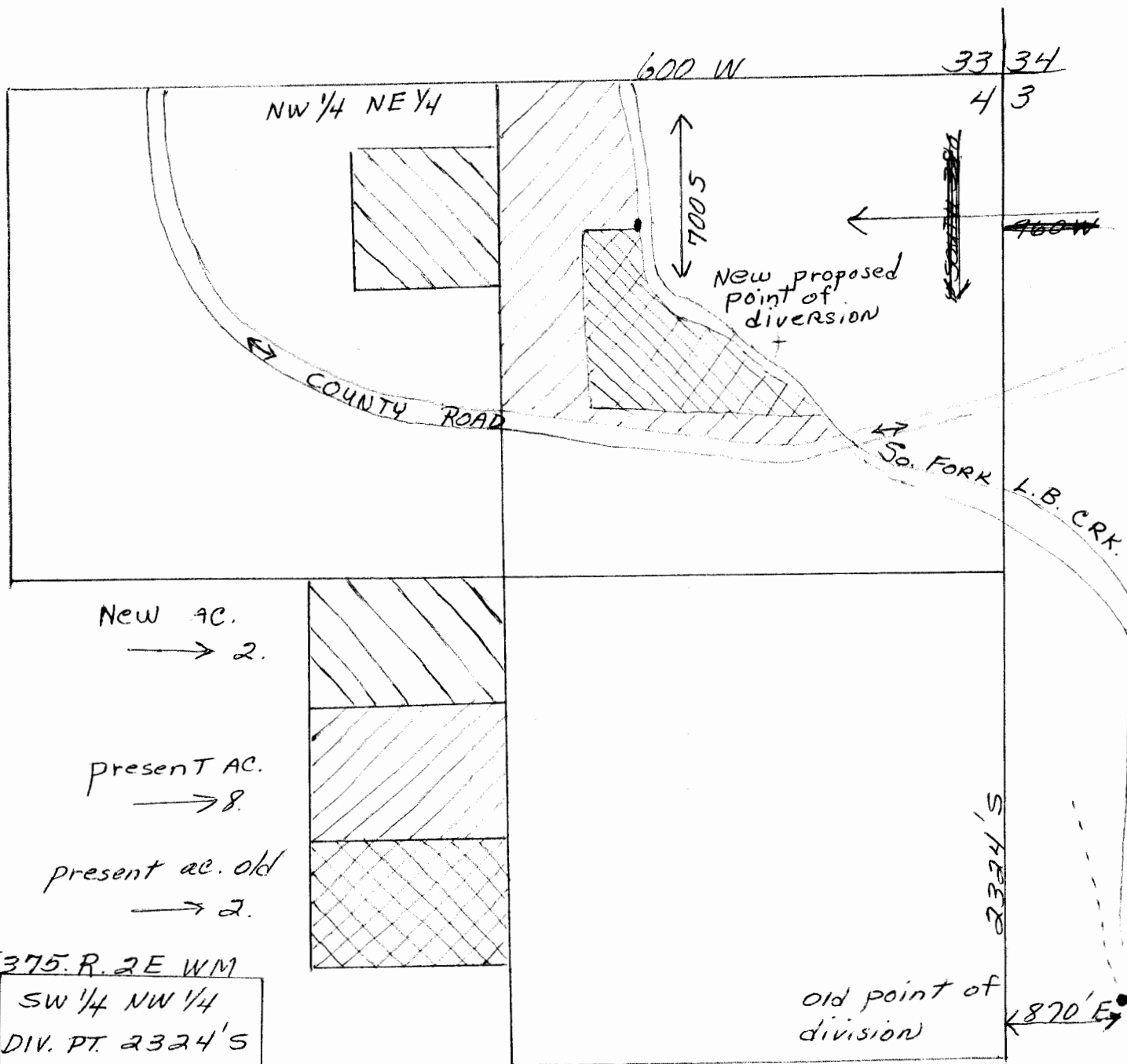
JUN 30 1981

WATER RESOURCES DEPT
SALEM, OREGON

RECEIVED

JUL 16 1981

WATER RESOURCES DEPT
SALEM, OREGON



New AC.
→ 2.

present AC.
→ 8.

present ac. old
→ 2.

T. 375, R. 2 E WM

SW 1/4 NW 1/4
DIV. PT. 2324'S
AND 870'E from
The NW COR of
Sec. 3

0% DIV. PT.