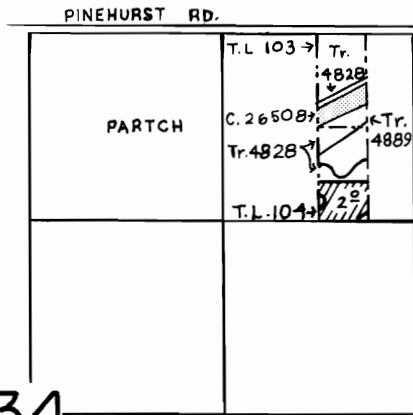
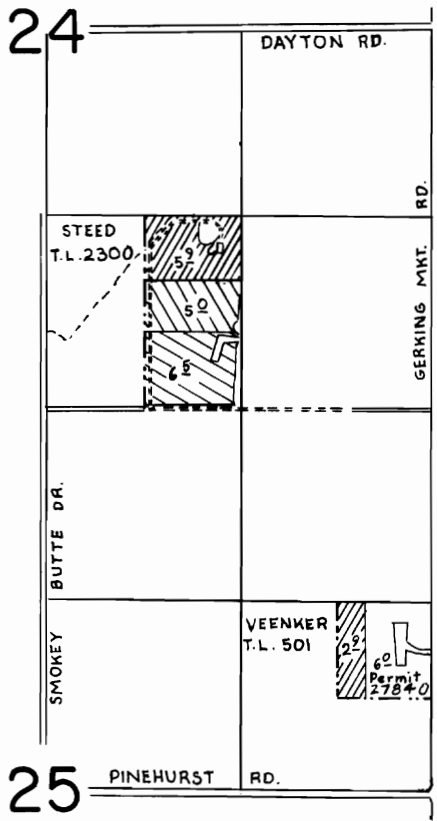
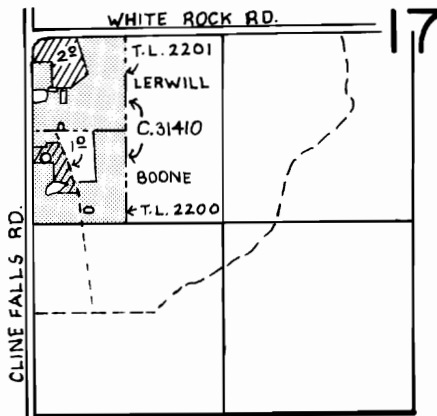


T.16S.,R.11E.,W.M.

T.16S.,R.11E.,W.M.



T.16S.,R.12E.,W.M.



SCALE: 1"=1320'

### FINAL PROOF SURVEY

UNDER

TRANSFER NO. 4830

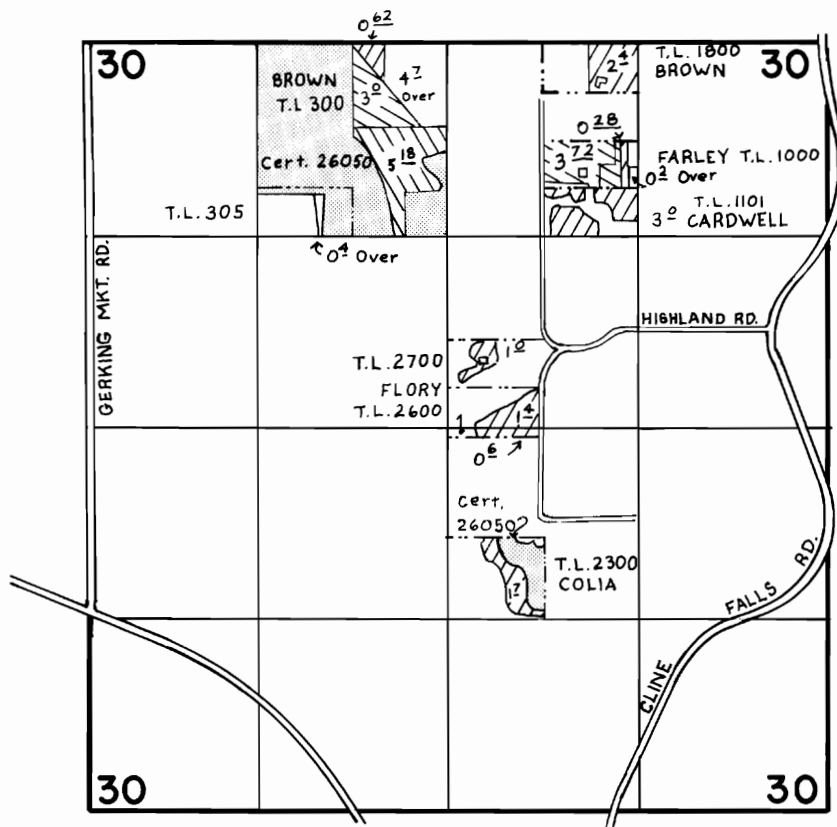
AND PARTS OF 4237 , AND 4964   
(4/6) (1/2)

IN NAME OF

**BOONE et. al.**

Surveyed APRIL 17, 1986, by LESLIE OLSON.....



# T.16S.,R.12E.,W.M.




SCALE : 1" = 1320'

## FINAL PROOF SURVEY

UNDER

TRANSFERS 4143 , 4857 

AND PART OF 4964  (2/2)

IN NAME OF

**CARDWELL et. al.**

Surveyed APRIL 17, 1986., by LESLIE OLSON.....

T.I.D.  
v. 35/p. 579  
v. 31/p. 670  
v. 35/p. 232