

RECEIVED

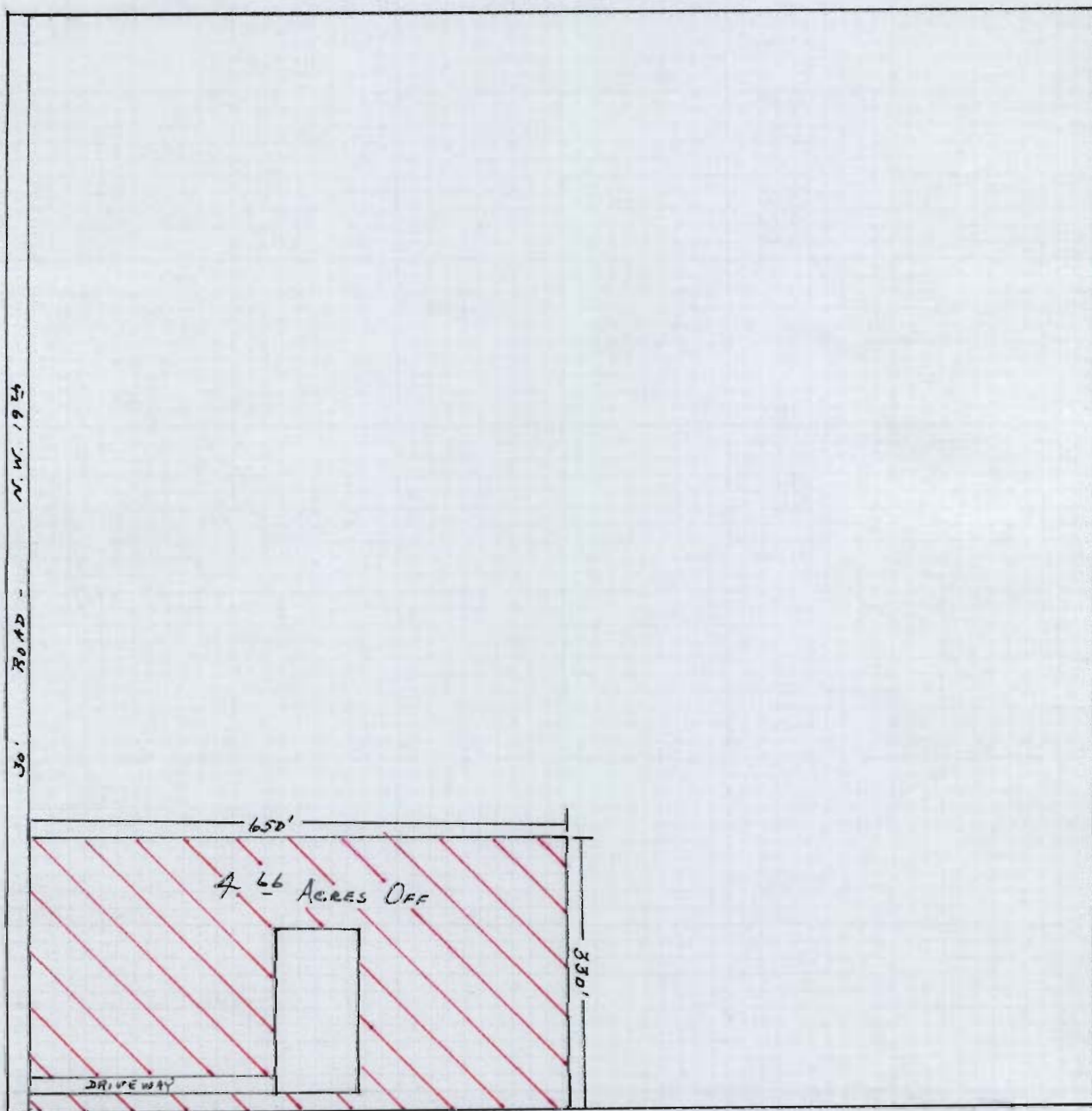
AUG 6 1981

WATER RESOURCES DEPT
SALEM, OREGON

T-4847

NW 1/4 SW 1/4 SEC. 9 T. 15S R. 13 E WM

SCALE: 1" = 200'



RECEIVED

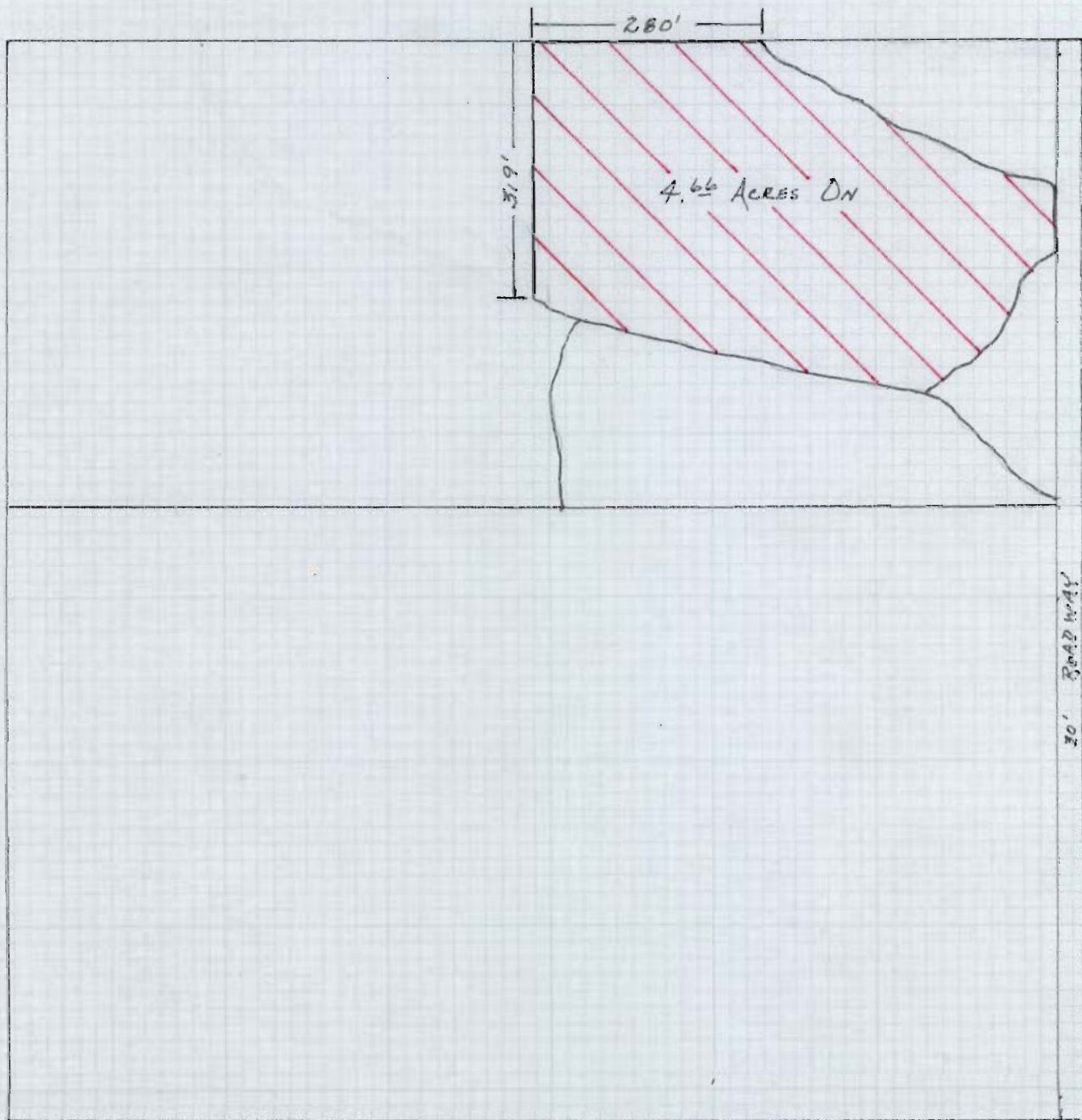
T-4847

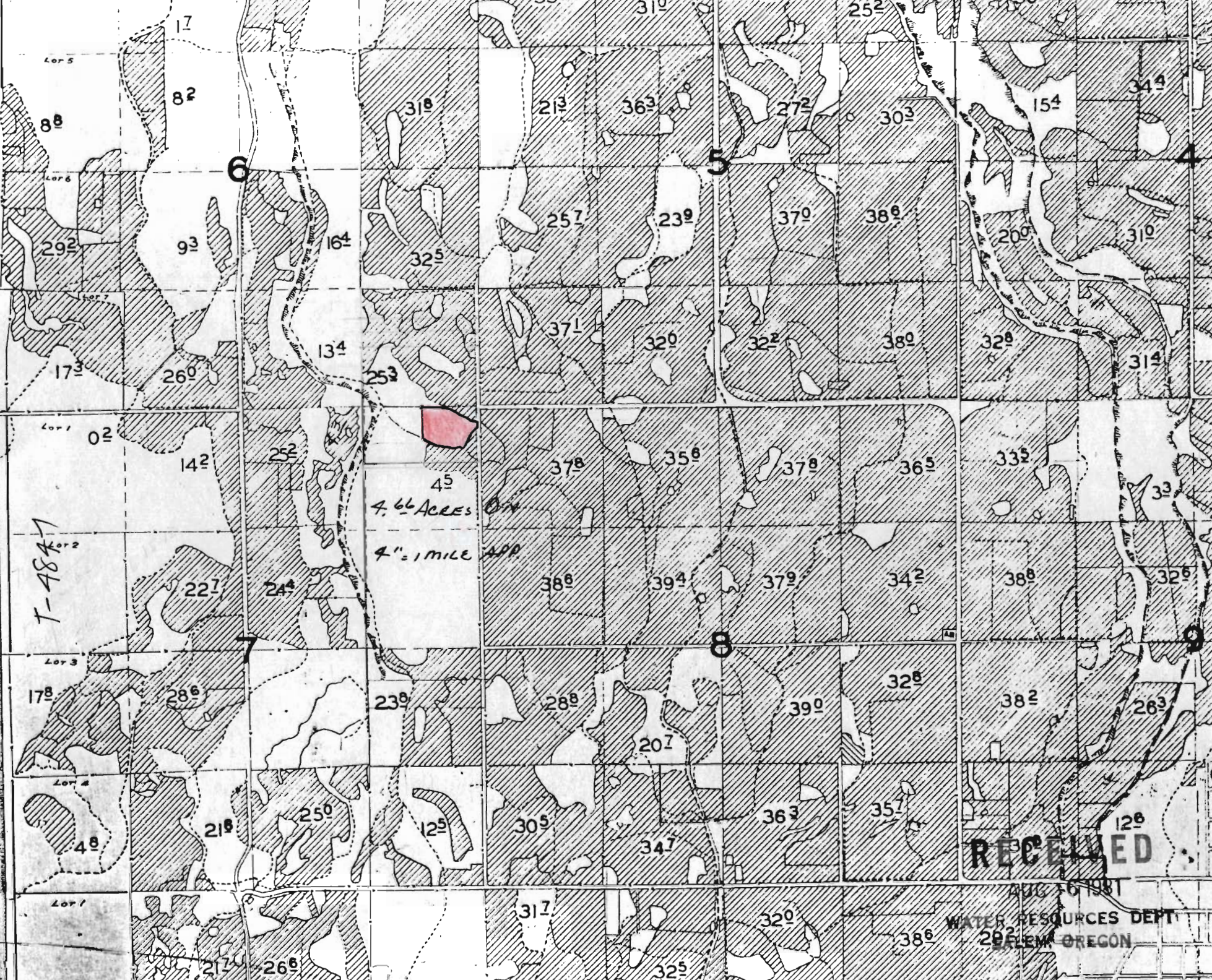
AUG 6 1981

WATER RESOURCES DEPT
SALEM, OREGON

NE¹/₄ NE¹/₄ SEC. 7 T. 15 S. R. 13 E W.M.

Scale: 1" = 200'





T-4847

45
4.66 Acres
4" = 1 MILE APP

RECEIVED
AUG 16 1981
WATER RESOURCES DEPT
29 ELEM OREGON



F-4847

4.65 Acres BFA
4.1 MILE APPROX

RECEIVED
AUG 6 1981
WATER RESOURCES DEPT
SALEM, OREGON