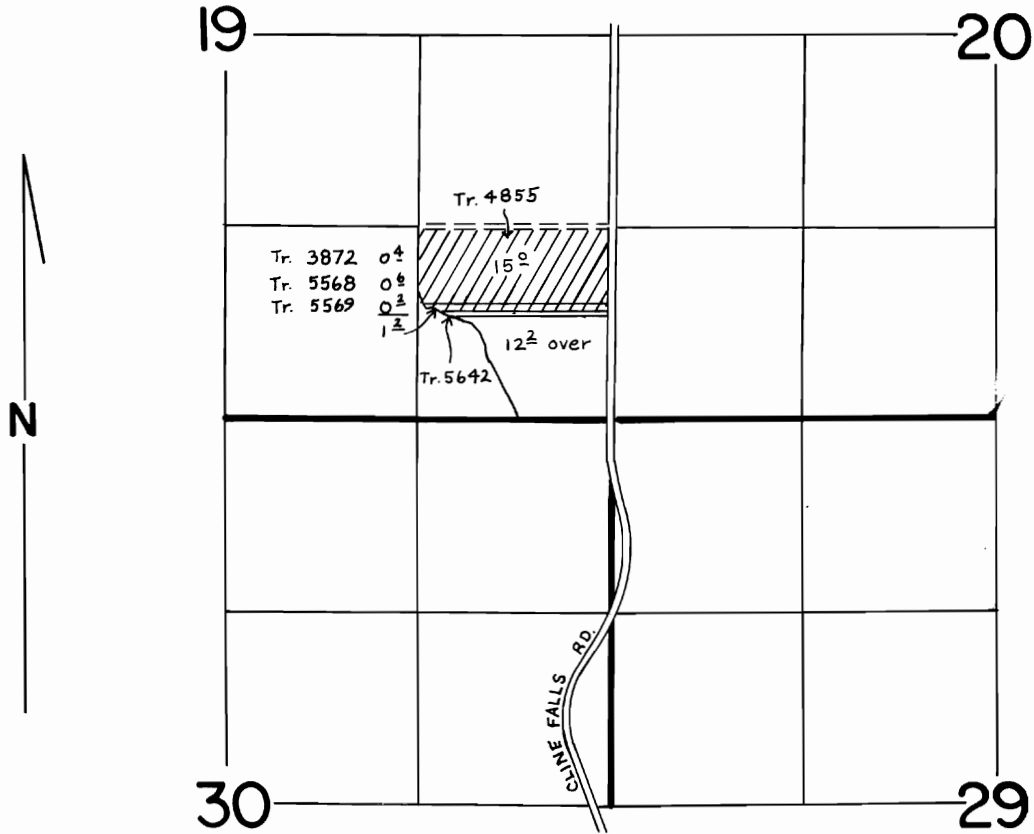


# T.16S.,R.12E.,W.M.



SCALE: 1" = 1320'

## FINAL PROOF SURVEY

UNDER

TRANSFERS 4855 & 5568

AND PARTS OF 3872 & 5569

IN NAME OF

**C.D. ROSE**

Surveyed MAY 14 1986., by M.J. MATTICK.....

REVISED  
5-11-87 LHM