

FROM

McKenzie Canyon

Deschutes River

OUT
14⁰ ac

Bull
CR Graham
FROM

Div. Pt.

FROM

Deep Canyon

OFF MAP

Bob Beesley 40.0 ac.

NW 1 SW 1 Sec. 9
T14S R12E W.M.

1 F 4865

16

RECEIVED

AUG 12 1981

WATER RESOURCES DEPT
SALEM, OREGON

Lower Bridge

Well 9

Shed

House

Pump

Nail

Well 5

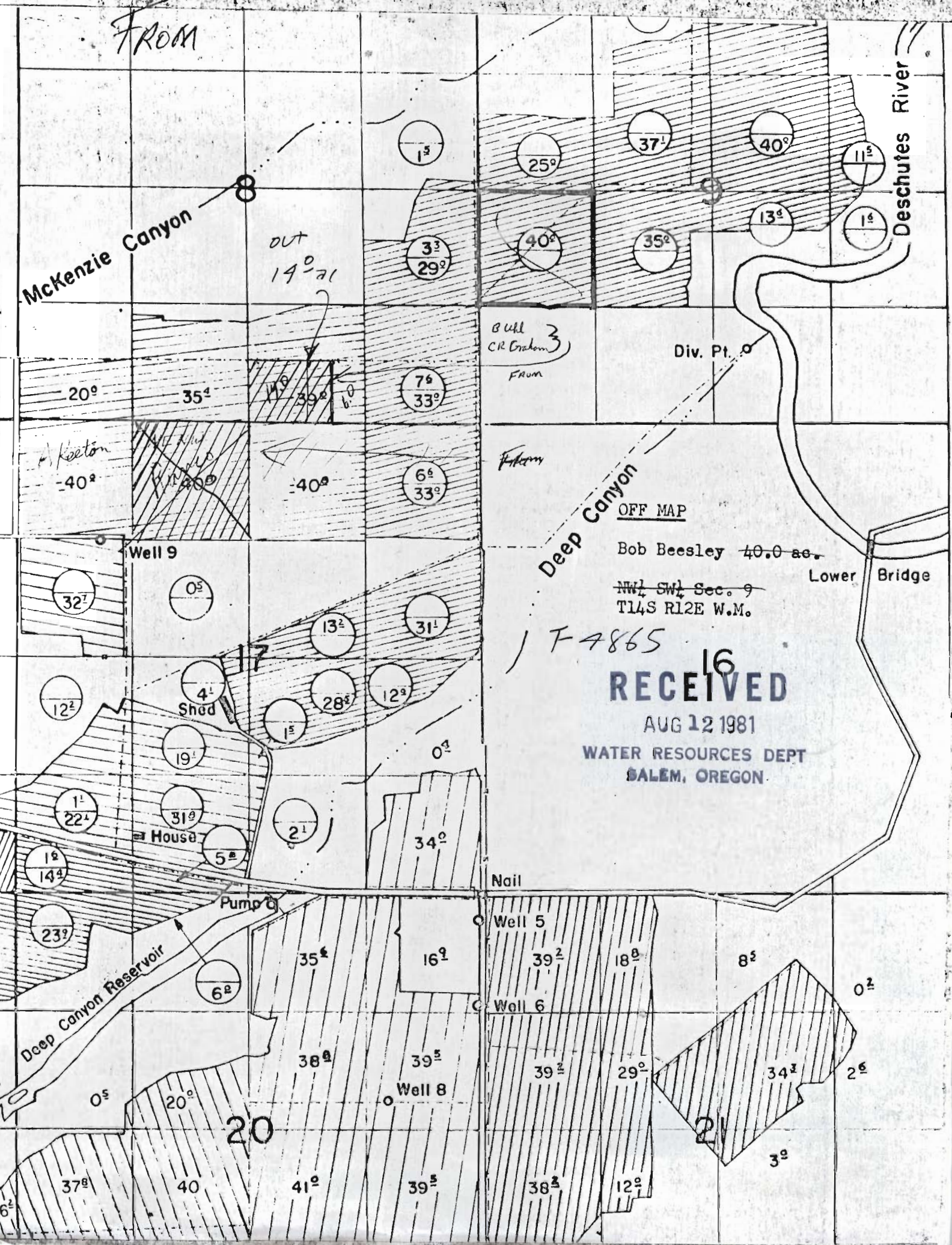
Well 6

Well 8

Deep Canyon Reservoir

20

21



DESCHUTES COUNTY

1"=400'

Wilson Fee

T-4865

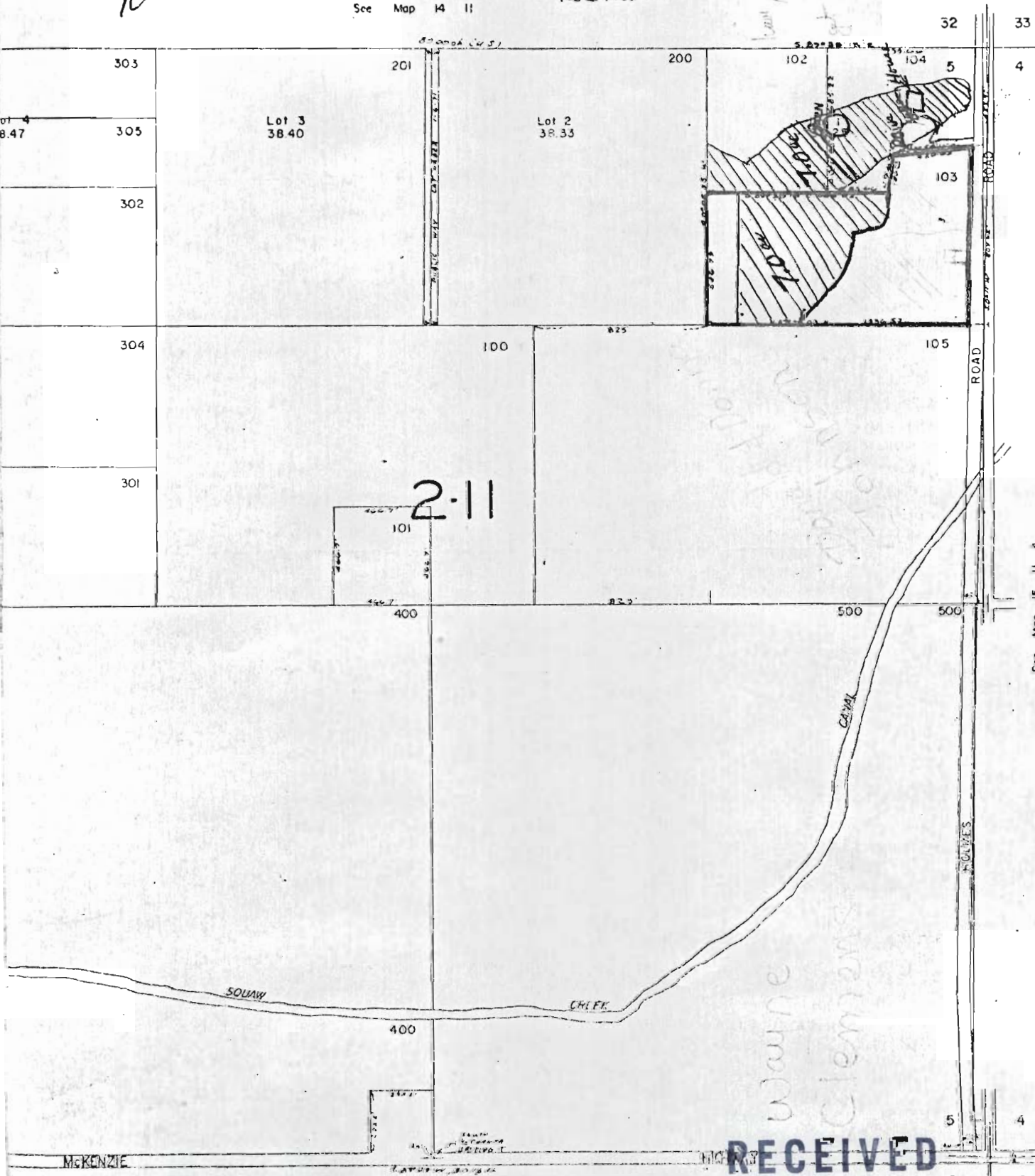
Bill R & Debra J
UHL
Star Rt Holmes Rd
Redmond

C R Graham + Bonnie
Holmes Rd

(548-7454)

To MAP.

See Map 14 11



See Map 15 11 4

RECEIVED

AUG 12 1981

WATER RESOURCES DEPT
SALEM, OREGON