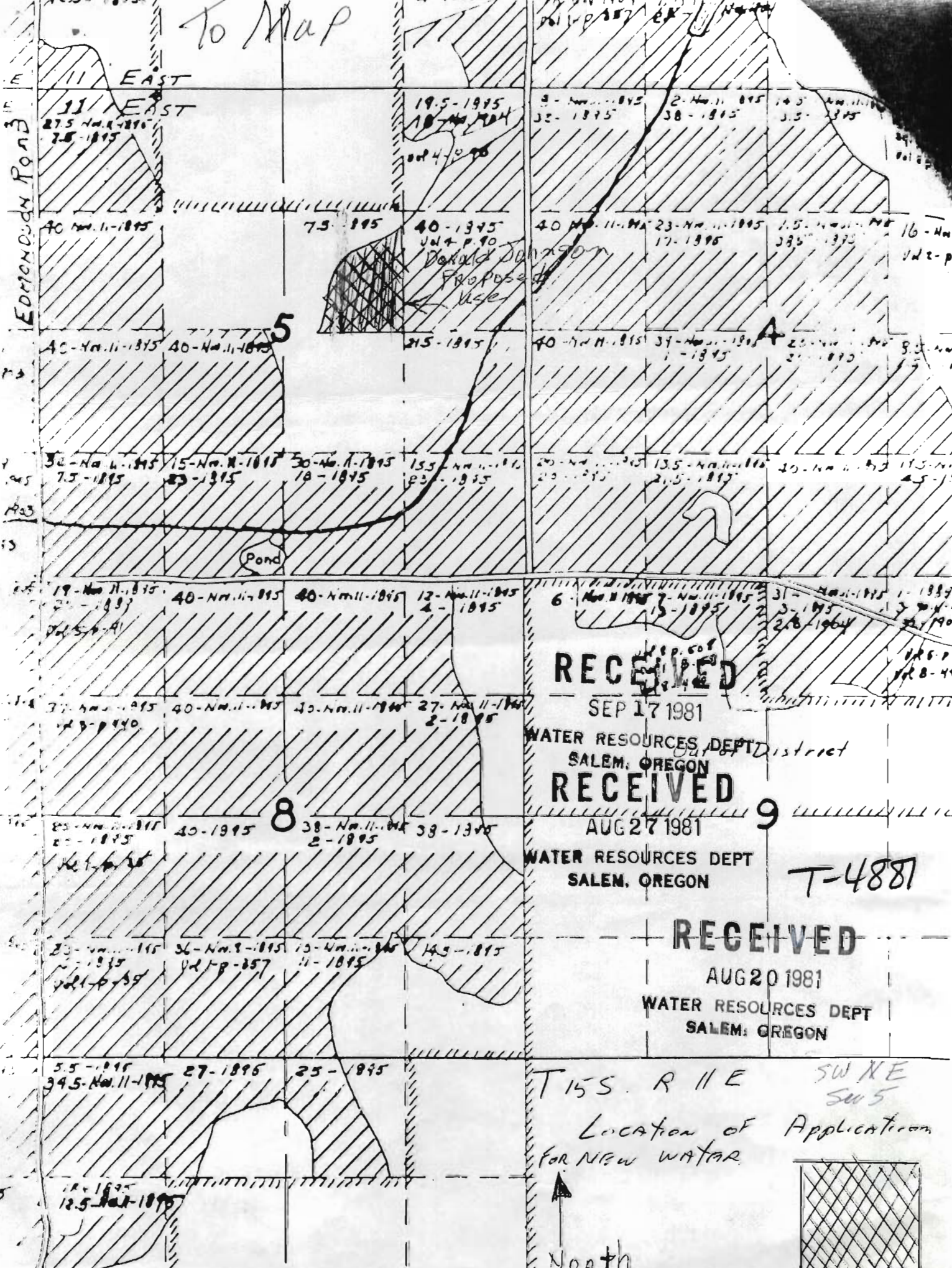


To Map



RECEIVED

SEP 17 1981

WATER RESOURCES DEPT
SALEM, OREGON

RECEIVED

AUG 27 1981

WATER RESOURCES DEPT
SALEM, OREGON

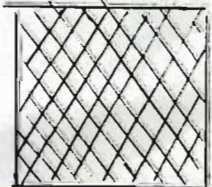
T-4881

RECEIVED

AUG 20 1981

WATER RESOURCES DEPT
SALEM, OREGON

T 15 S. R 11 E SW NE
SW 5
Location of Application
for NEW WATER



Mckenzie Canyon

Deschutes

Div. Pt. 0

From Map
Deep Canyon

14^s R12E Sec 17
16.0 acres in NW^{1/4} NE^{1/4}
From Robert K Beesley
to Donald Johnson

T-4887

RECEIVED

AUG 27 1981

WATER RESOURCES DEPT
SALEM, OREGON

RECEIVED

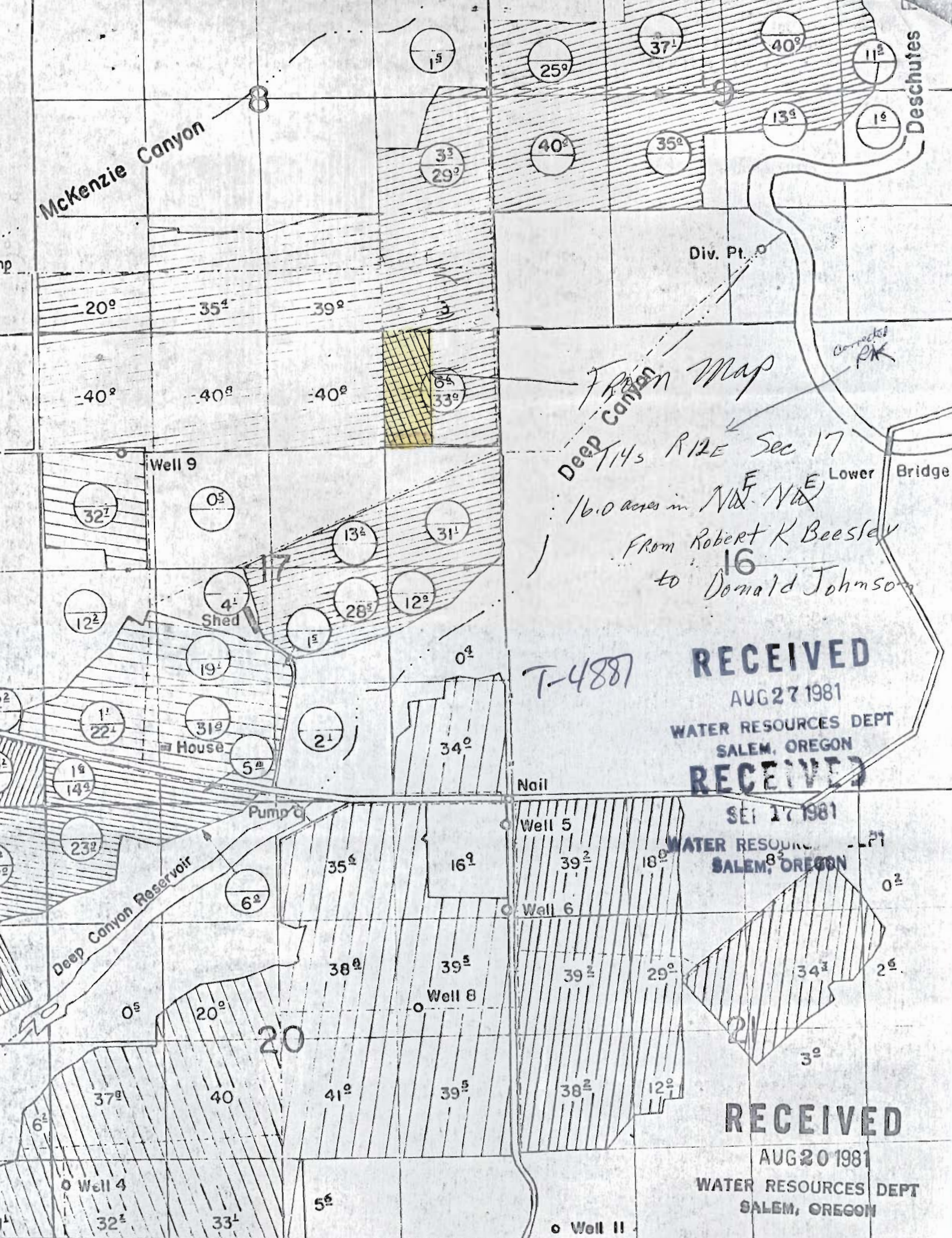
SEP 17 1981

WATER RESOURCES DEPT
SALEM, OREGON

RECEIVED

AUG 20 1981

WATER RESOURCES DEPT
SALEM, OREGON



Well 9

Shed

House

Pump

Nail

Well 5

Well 6

Well 8

Well 4

Well 11

Lower Bridge

connected PK