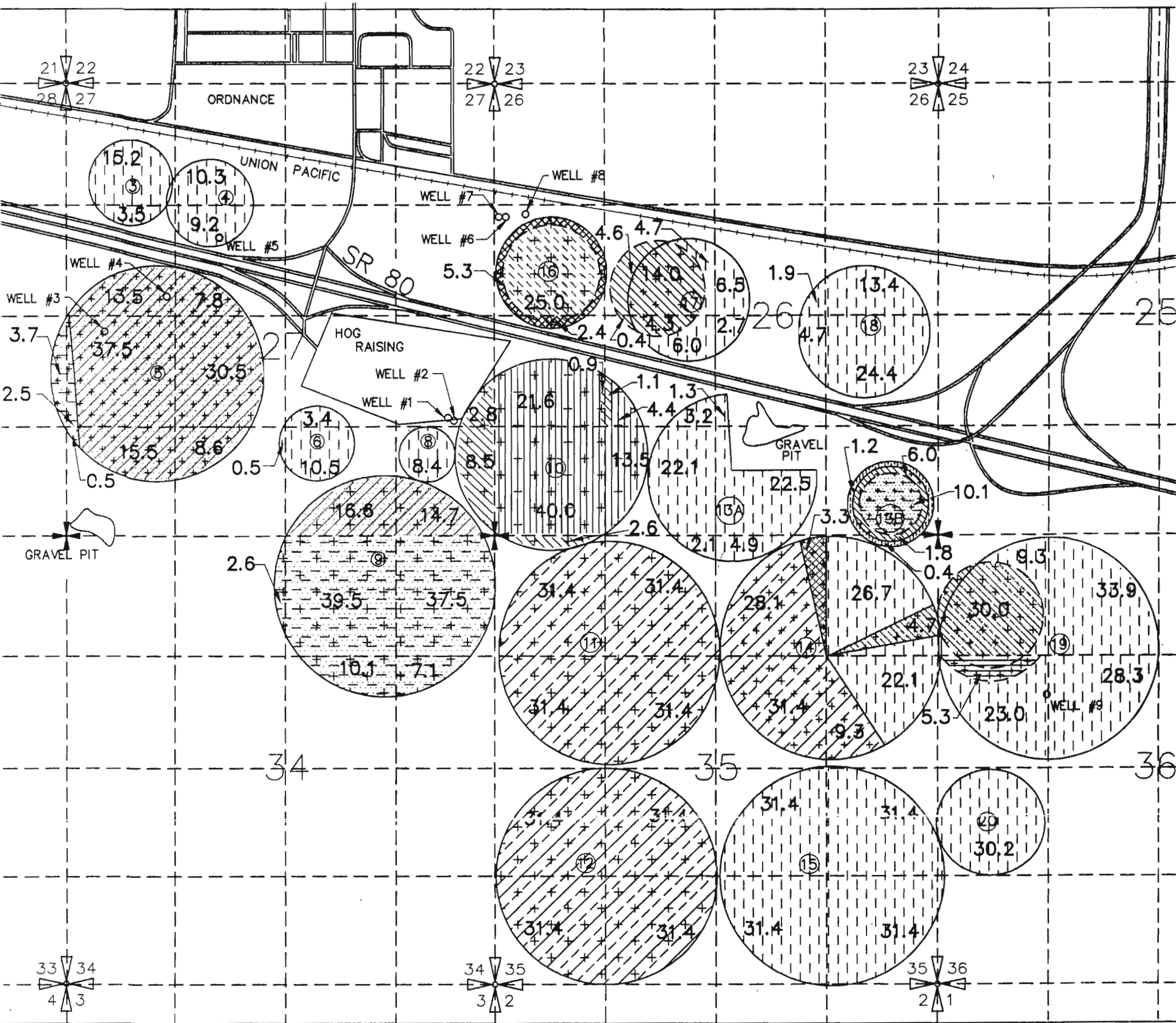


T. 4N., R.27E., W.M.  
HANSELL BROTHERS INC. FINAL PROOF



WELL 1 LOCATED 1420'N & 490'W FROM SE COR. SEC.27 BEING WITHIN NE<sup>1</sup>/<sub>4</sub>SE<sup>1</sup>/<sub>4</sub>  
 WELL 2 LOCATED 1390'N & 430'W FROM SE COR. SEC.27 BEING WITHIN NE<sup>1</sup>/<sub>4</sub>SE<sup>1</sup>/<sub>4</sub>  
 WELL 3 LOCATED 2450'N & 460'E FROM SW COR. SEC.27 BEING WITHIN NW<sup>1</sup>/<sub>4</sub>SW<sup>1</sup>/<sub>4</sub>  
 WELL 4 LOCATED 230'N & 1210'E FROM W<sup>1</sup>/<sub>4</sub> COR. SEC.27 BEING WITHIN SW<sup>1</sup>/<sub>4</sub>NW<sup>1</sup>/<sub>4</sub>

WELL 5 LOCATED 960'N & 1850'E FROM W<sup>1</sup>/<sub>4</sub> COR SEC.27 BEING WITHIN SE<sup>1</sup>/<sub>4</sub>NW<sup>1</sup>/<sub>4</sub>  
 WELL 6,7 LOCATED 1130'N & 60'E FROM W<sup>1</sup>/<sub>4</sub> COR. SEC.26 BEING WITHIN SW<sup>1</sup>/<sub>4</sub>NW<sup>1</sup>/<sub>4</sub>  
 WELL 8 LOCATED 1160'N & 370'E FROM W<sup>1</sup>/<sub>4</sub> COR. SEC.26 BEING WITHIN SW<sup>1</sup>/<sub>4</sub>NW<sup>1</sup>/<sub>4</sub>  
 WELL 9 LOCATED 1884'S & 1315'E FROM NW COR. SEC.36 BEING WITHIN SW<sup>1</sup>/<sub>4</sub>NW<sup>1</sup>/<sub>4</sub>

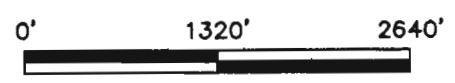
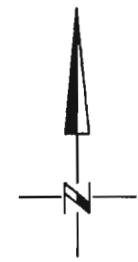
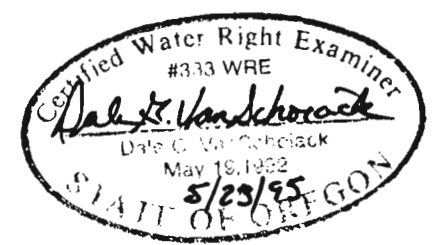
- |  |                                 |  |                   |
|--|---------------------------------|--|-------------------|
|  | T-4152                          |  | PERMIT NO. G-2694 |
|  | PERMIT NO. U-649                |  | T-4928            |
|  | PERMIT NO. G-3822 SUPPLEMENTAL  |  | PERMIT NO. G-2335 |
|  | G-3822 PRIMARY                  |  | T-4926            |
|  | PERMIT NO. G-2672               |  | HOG RAISING       |
|  | PERMIT NO. G-10505 SUPPLEMENTAL |  | PERMIT NO. G-1671 |
|  | PERMIT NO. G-10505 PRIMARY      |  | T-4927            |

① CIRCLE NUMBER  
 31.4 IRRIGATED ACREAGE

RECEIVED

MAY 30 1995

WATER RESOURCES DEPT  
 SALEM, OREGON



NOTE: THE PURPOSE OF THIS MAP IS TO IDENTIFY THE APPROXIMATE LOCATION OF THE WATER RIGHT. IT IS NOT INTENDED TO PROVIDE INFORMATION RELATIVE TO THE LOCATION OF PROPERTY OWNERSHIP BOUNDARY LINES.