

T-4949

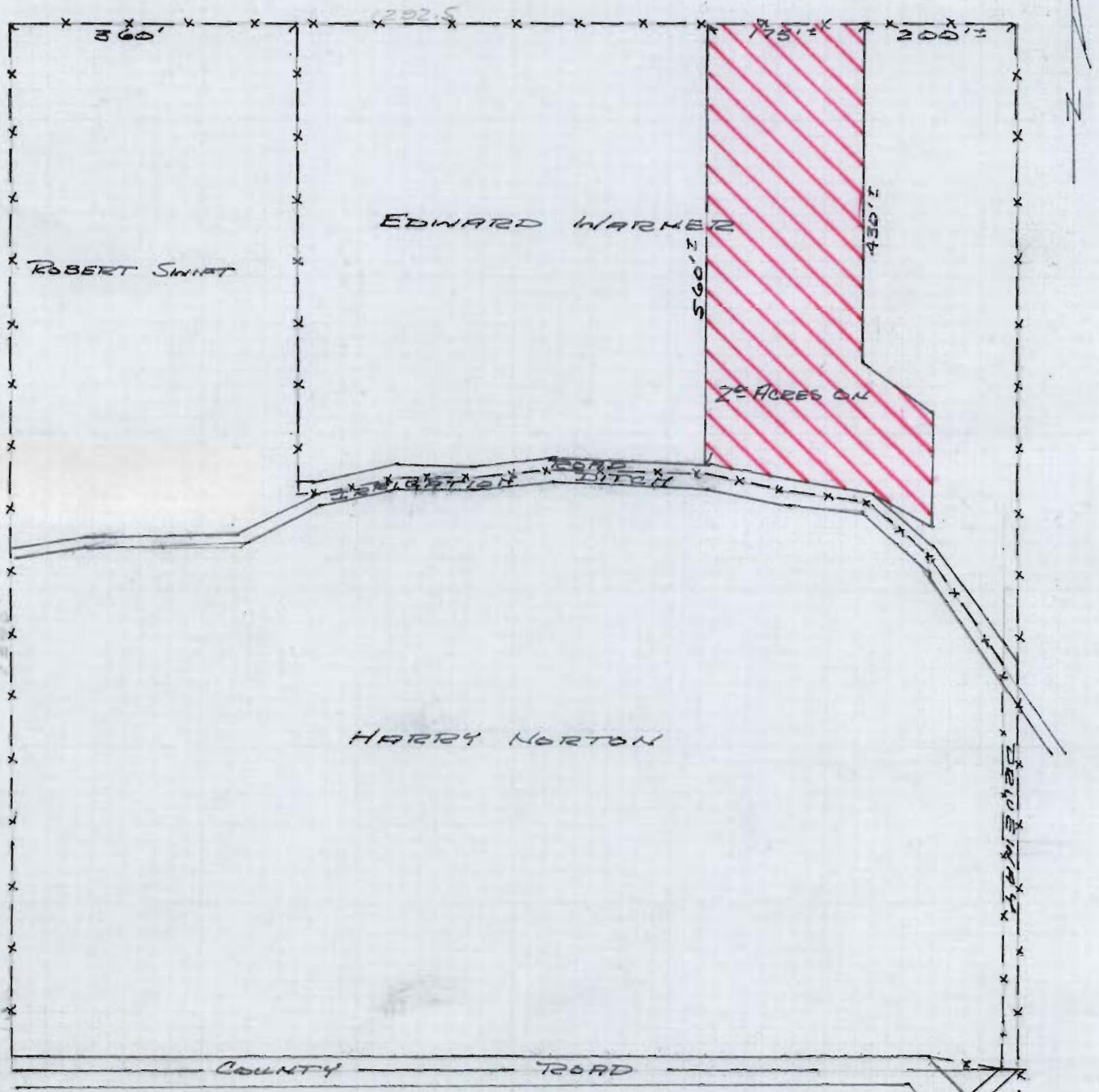
SECTION 18, T. 14. S., R. 14. E. 11. M.

SW 1/4 - SW 1/4

Z. O. FENCES ON

EDWARD J. WARNER

SCALE 1" = 200'



RECEIVED

DEC. 9 1981

WATER RESOURCES DEPT
SALEM, OREGON

SECTION 14, T.14S., R.13E.W.M.

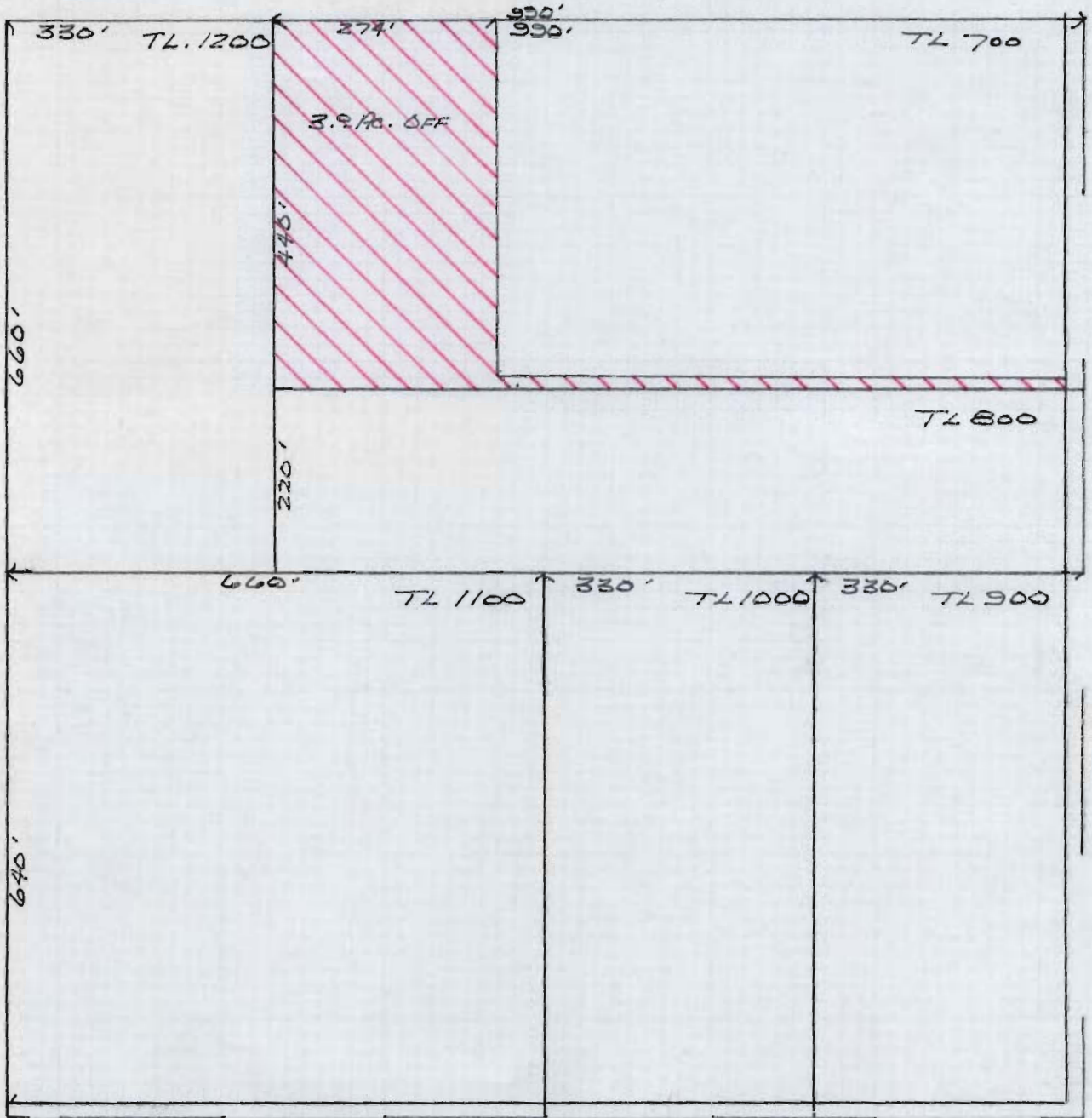
SE 1/4 - NW 1/4

T-4949

3.9 ACRES OFF

SCALE 1"=200'

EDWARD J. WARNER



RECEIVED

DEC 9 1981

WATER RESOURCES DEPT
SALEM, OREGON