

From Map

T-4984

RECEIVED

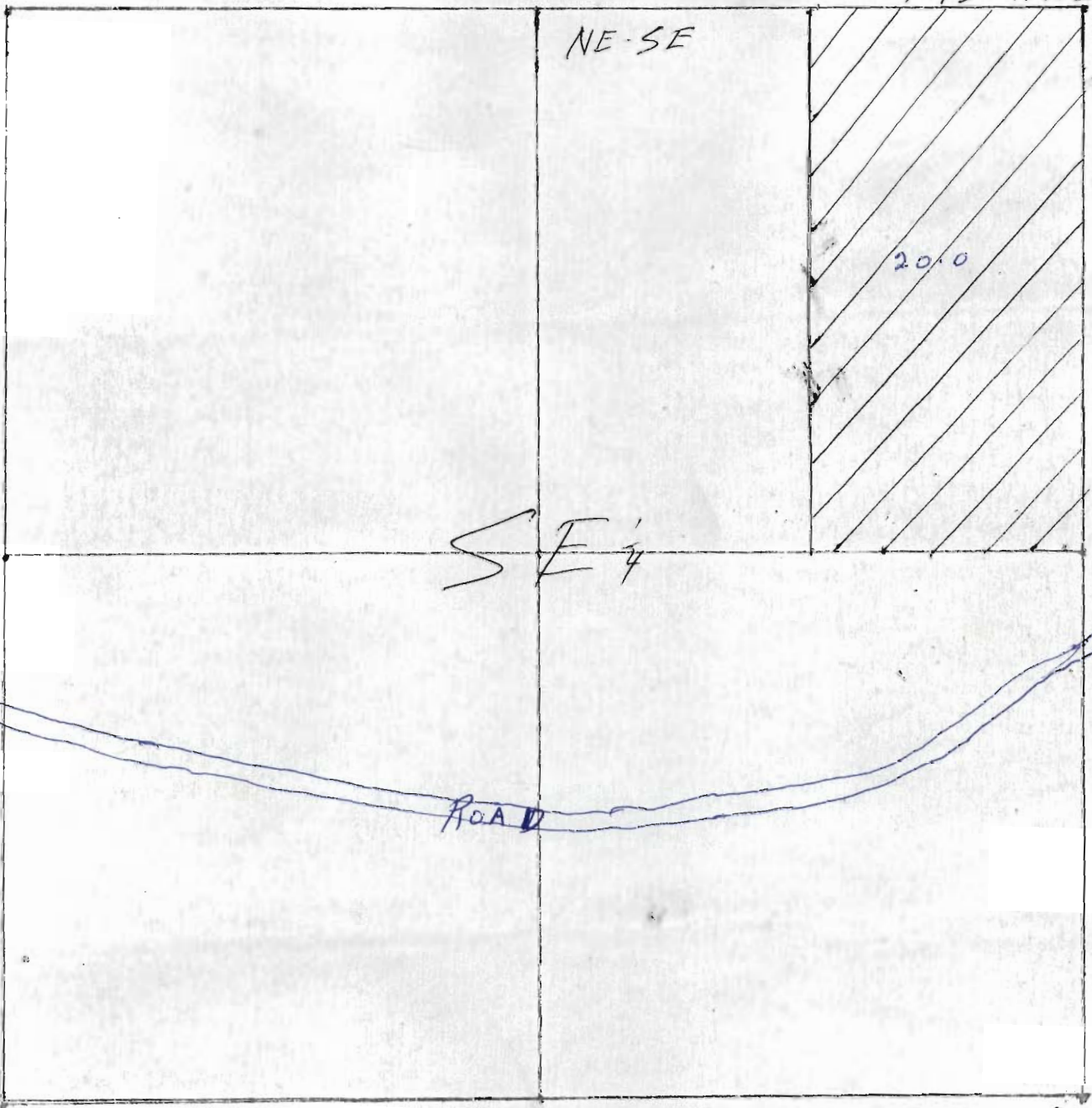
FEB 10 1982

WATER RESOURCES DEPT

SALEM, OREGON

20.0 acres NE  $\frac{1}{4}$  & SE  $\frac{1}{4}$  Sec 13

T14S R11E WM



1" = 400 ft.

From B Watson  
to P Holmes

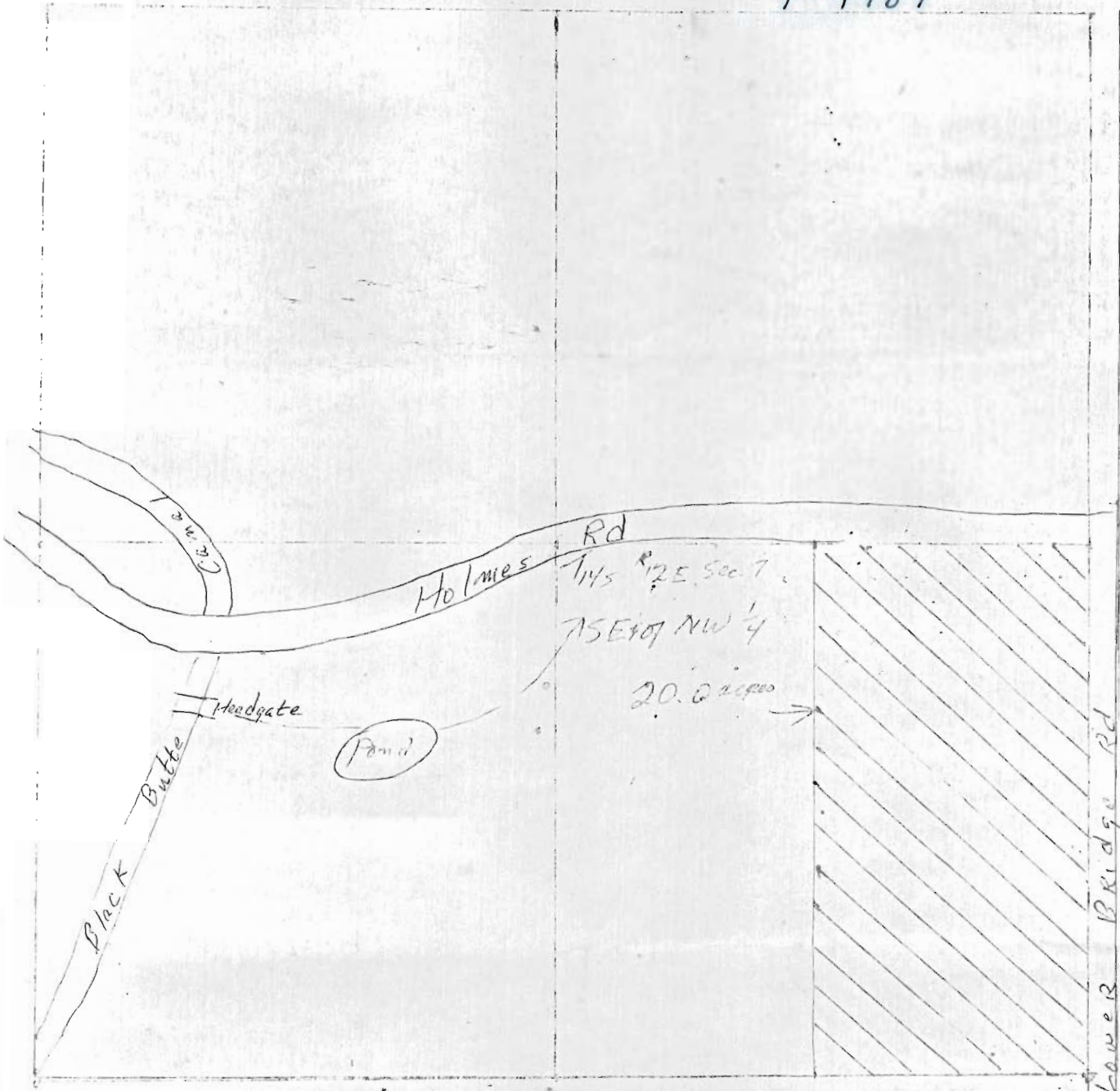
To Map

RECEIVED

FEB 10 1982

WATER RESOURCES DEPT  
SALEM, OREGON

T-4984



1" = 400 ft.

To Priddy Holmes  
From Gerald Watson