

SECTION 13 T.17 S. R. 11 E. W.M.

1.0 ON (c. 26508) (1907)

.5 ON (c. 26508) (1907)

4.5 OFF (c. 31410) (1907)

1.5 OFF (c. 26508) (1907)

.5 OFF (c. 31410) (1907)

1.0 OFF (c. 26508) (1907)

1" = 400'

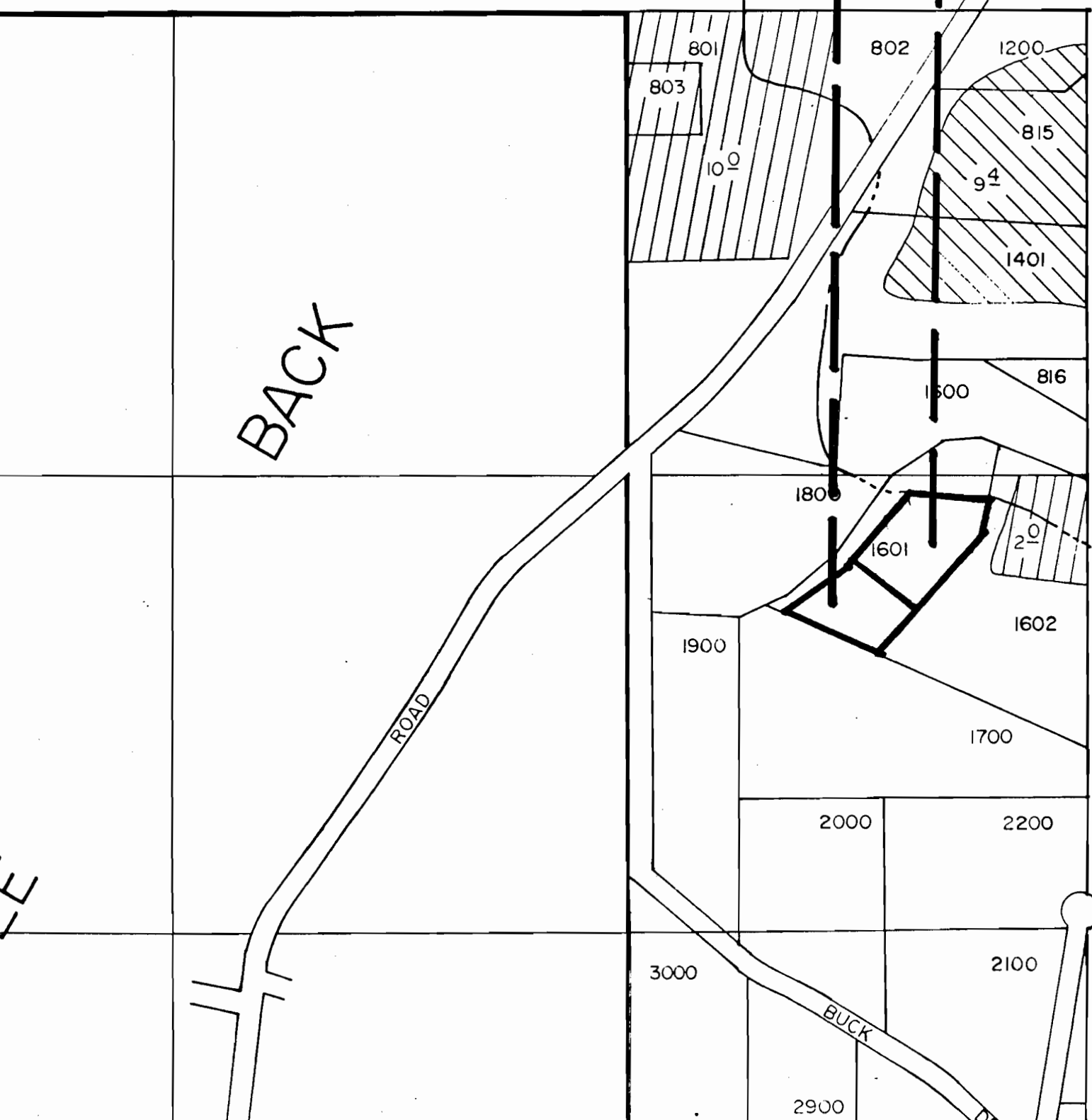


14 T.17S. R.11E. W.M.

2.0 ON (c. 31410) (1907)

1.0 ON (c. 26508) (1907)

1" = 400



1" = 400'

3.0 ON (C. 31410) (1907)

