

SECTION 34 T.16S. R.11E. W.M.

1" = 400'

3.0 OFF (9/1900)

1.0 ON (9/1900)

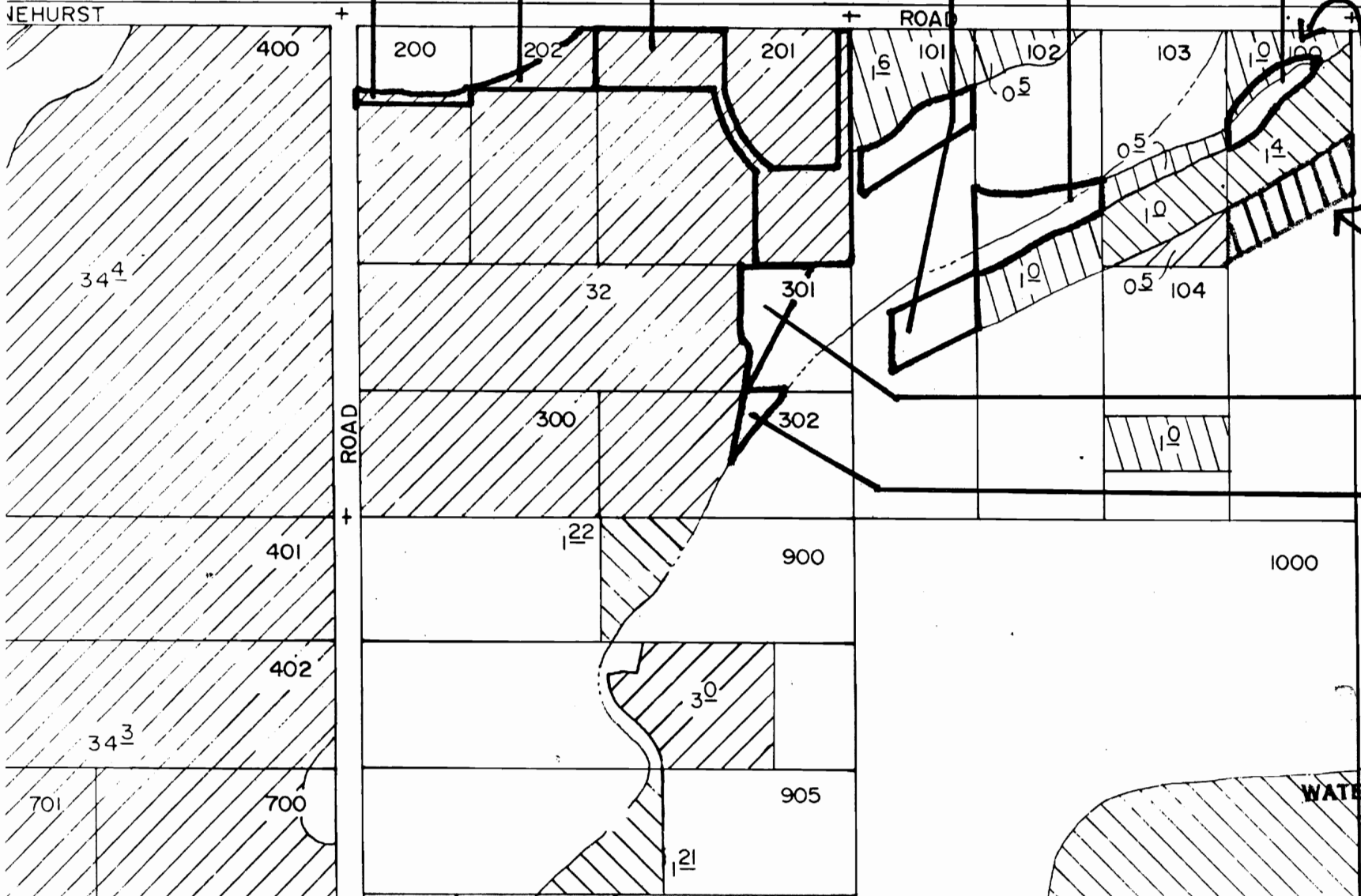
T-5051

.9 OFF (9/1900)

.3 OFF (9/1900)

1.4 ON (9/1900)

.6 ON (9/1900)



NOTE; the correct location of the 1.0 (1913) IS NOT

.8 ON (9/1900)

.4 ON (9/1900)

MAY 16 1992

WATER RESOURCES DEPT SALEM, OREGON