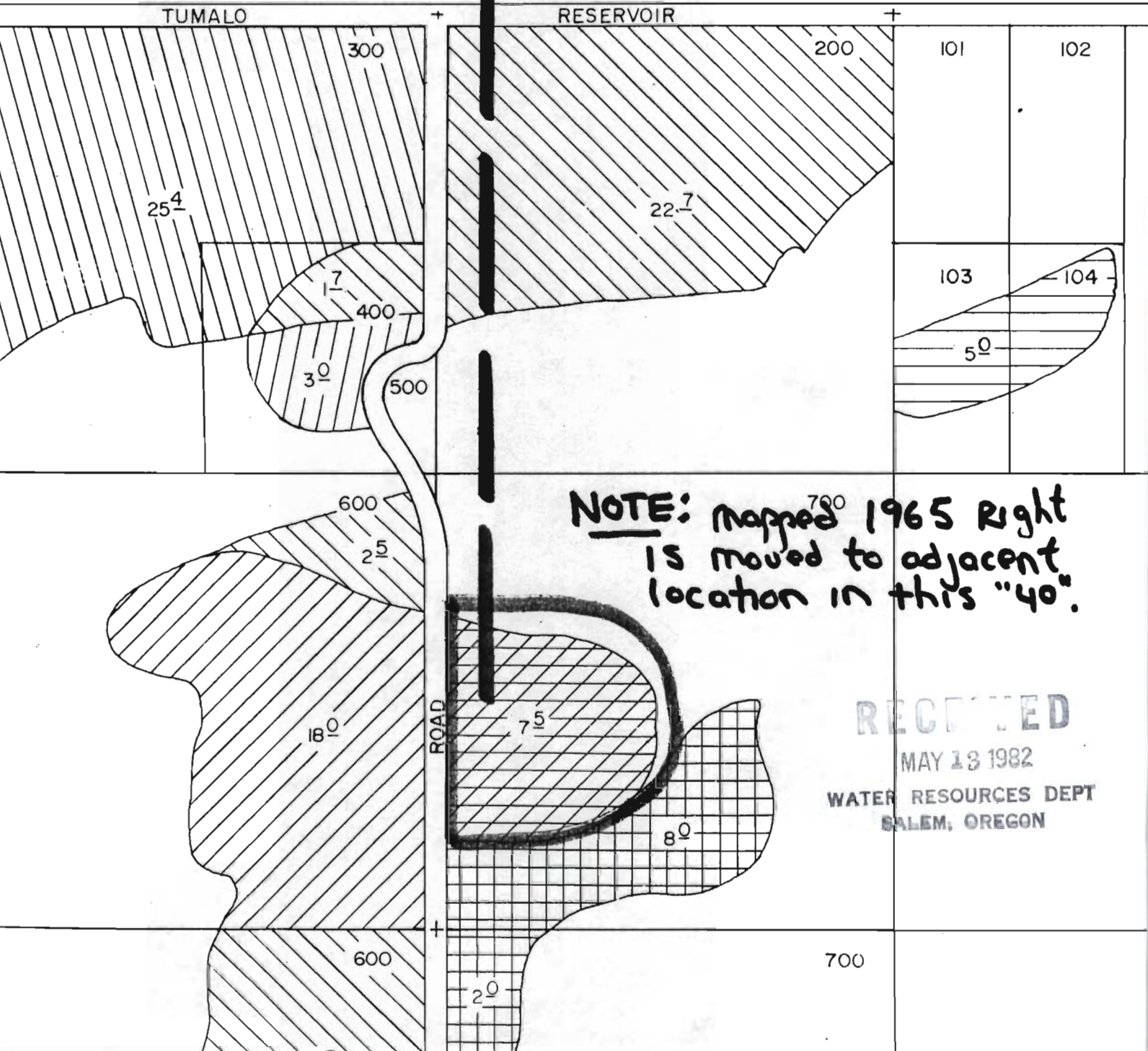


SECTION 2 T.17 S. R.11 E. W.M

1" = 400'

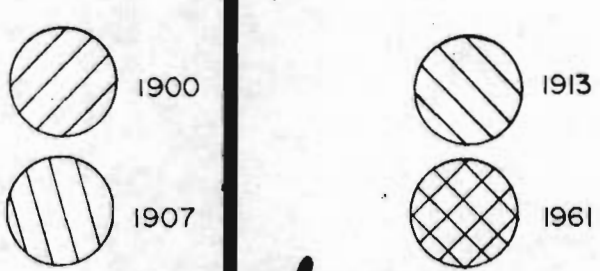
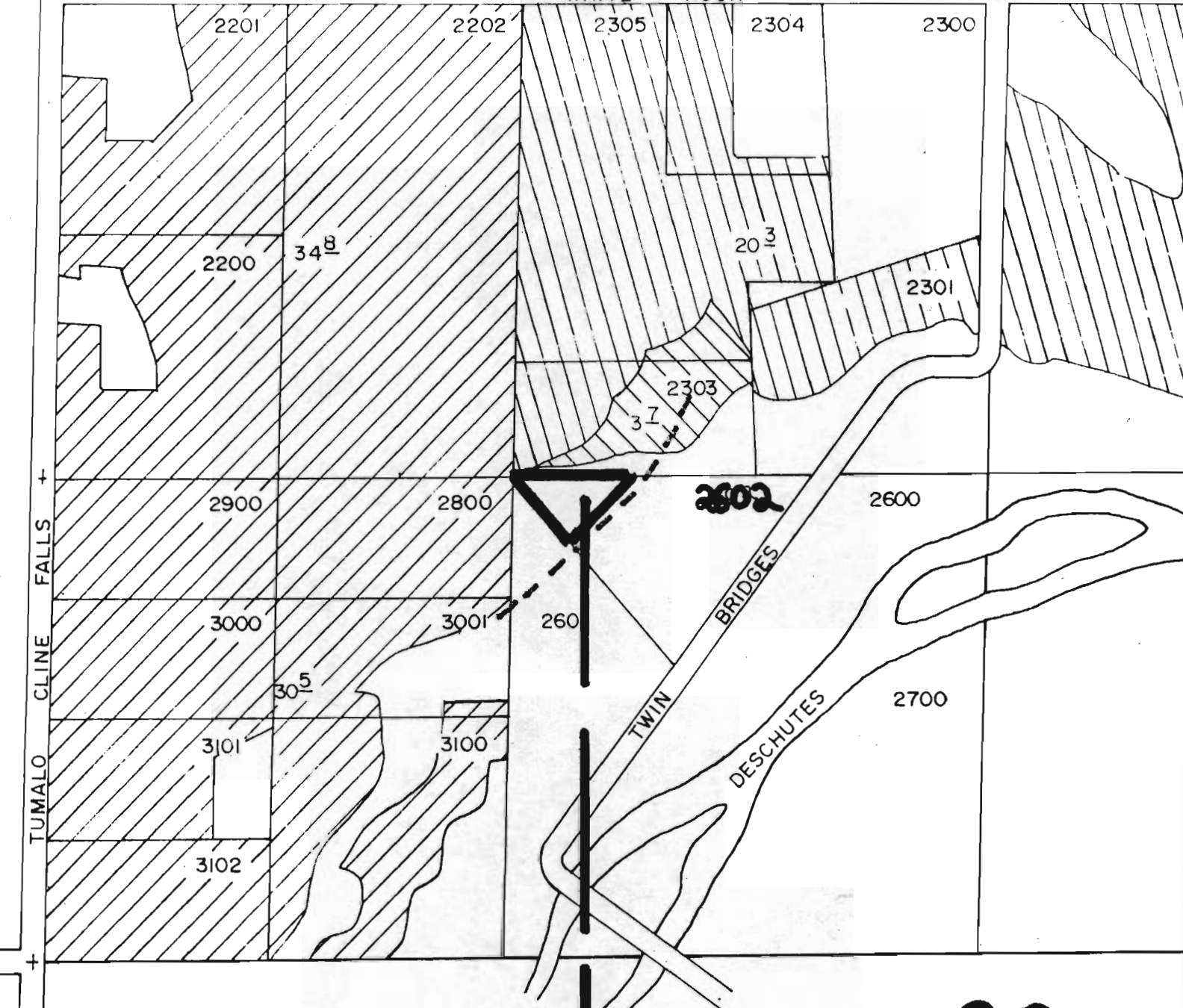
**8.0 ON** (c.26508, 9/1900)

T-5052



**NOTE:** mapped 1965 Right is moved to adjacent location in this "40".

RECEIVED  
MAY 13 1982  
WATER RESOURCES DEPT  
SALEM, OREGON



T-5052

20

1.0 ON (c. 26508, 9/1900)

16-12-17

RECEIVED  
MAY 18 1982  
WATER RESOURCES DEPT  
SALEM, OREGON