

SW1/4 NE 1/4 SEC 17 T36S R5W W.M.

RECEIVED

AUG 31 1982

WATER RESOURCES DEPT.
SALEM, OREGON

JOSEPHINE COUNTY

1"=100'

SEE MAP 36 5 17AB

RECEIVED

SEP 30 1982

WATER RESOURCES DEPT.
SALEM, OREGON

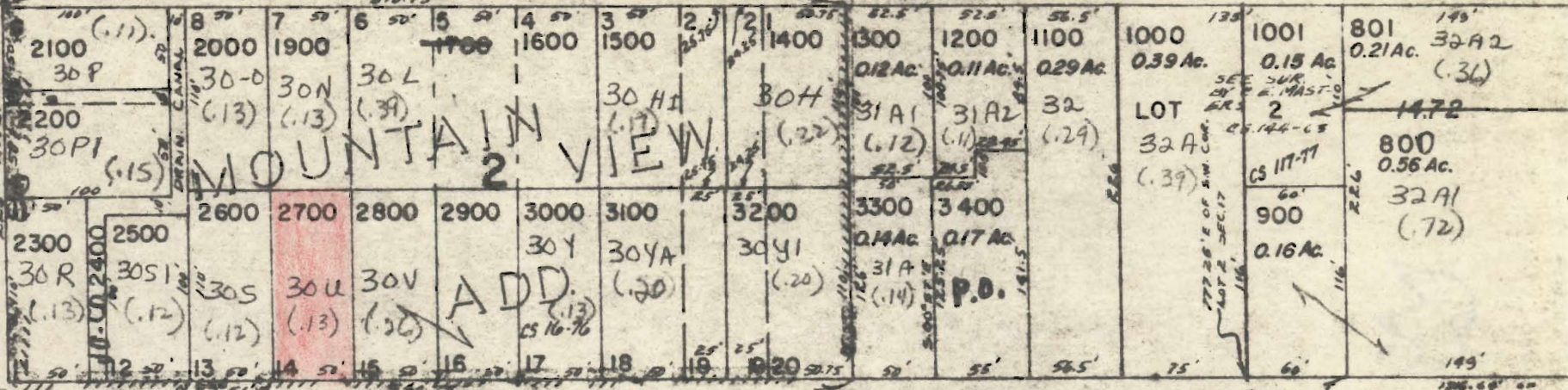
WHARTON (MOUNTAIN VIEW DRIVE)

STREET NAME IN PARENTHESIS IS NAME AS
RECORDED IN ORIGINAL PLAT.

SEE SURVEY BY J.R. WHITE - 4-25-53 C.S. 67-53

ST.

N. 9TH ST. SEE SUR. BY CS 6-57
W.M. BAKER 2-5-51



"A"

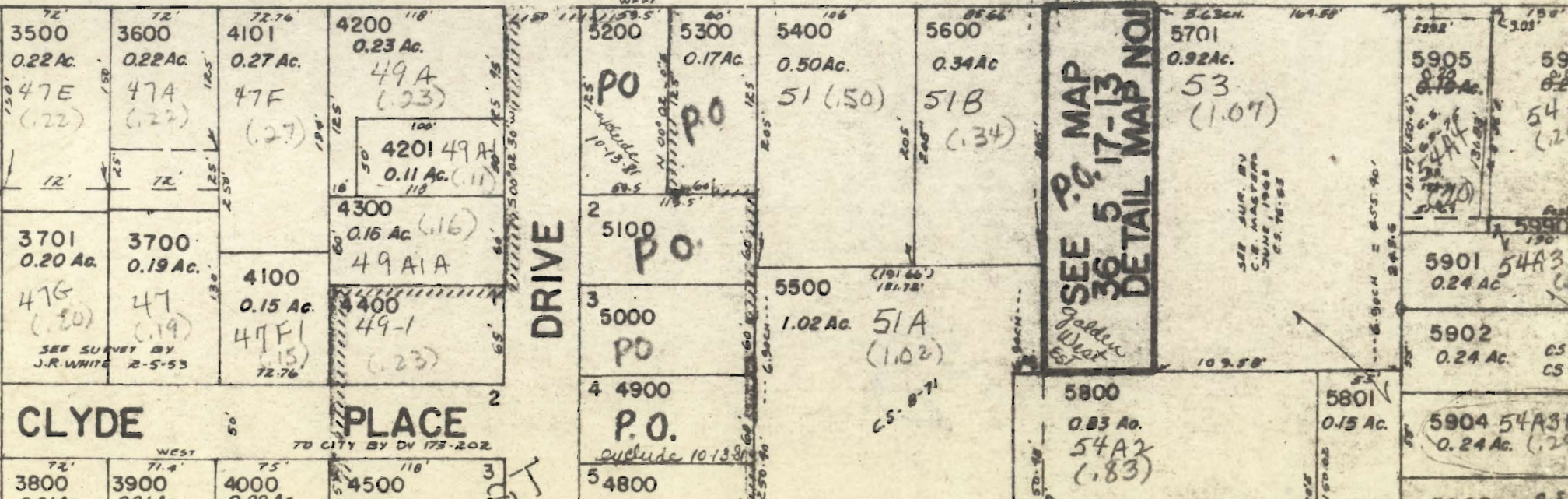
N. LINE OF J.K. JONES D.L.C. 38

22.506 CH. E. OF
N.W. COR. D.L.C. 38
N.W. COR. PROP
DESE. IN DV 76-50
WEST

2.906 CH

857.25' E OF
S.W. COR. LOT 2
OF SEC. 17

126.69' E OF
S.W. COR. E. OF
N.W. COR. D.L.C.



SEE P.O. MAP
36 5 17-13
DETAIL MAP NO. 1

DRIVE

CLYDE PLACE

PLACE

P.O.

include 10.138

5904 54A3E
0.24 Ac. (.24)