

46 corner East  
Lot 1 -  
Sec 17

4 NE 1/4 SEC 17 T36S R5E W.M.  
JOSEPHINE COUNTY

36 5 17-14  
GRANTS PASS

1"=100'

RECEIVED

AUG 1 1982

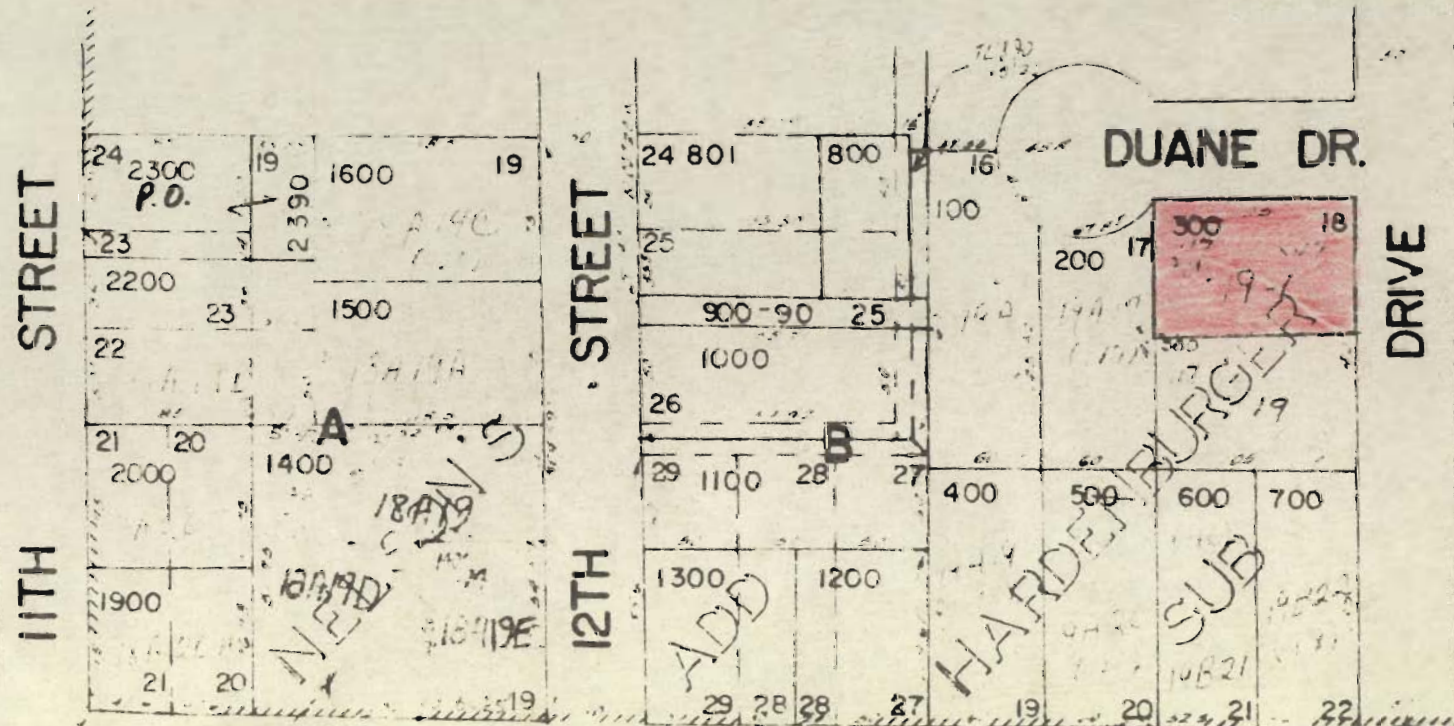
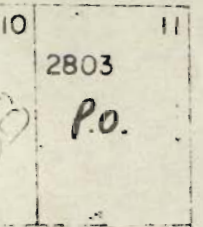
WATER RESOURCES DEPT.  
SALEM, OREGON

SEE MAP 36 5 17AA

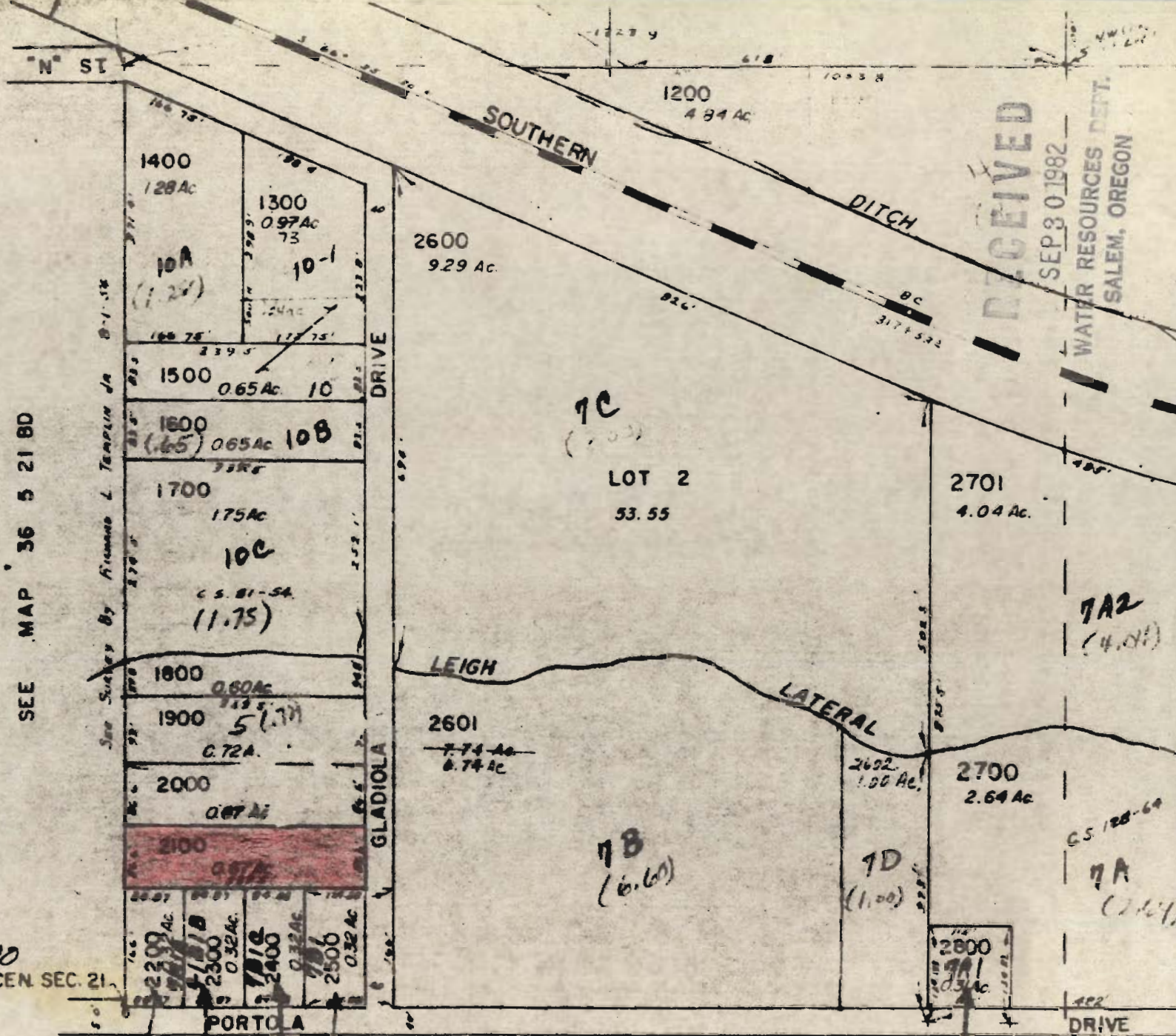
RECEIVED  
SEP 30 1982  
WATER RESOURCES DEPT.  
SALEM, OREGON

T-5112

DRIVE



- CANCELLED
- TL1700
- " 1800
- " 2100
- " 4700
- 8101
- 6301
- 6500
- 6800
- 8190



RECEIVED  
 SEP 30 1982  
 WATER RESOURCES DEPT.  
 SALEM, OREGON

SEE MAP 36 5 21 8D

See Survey By Fremont L Temple Jr B-1-58

SEE SURVEY BY J.R. WHITE  
 (.32) (.32) (.32) (.32)

36-5-21A

TL 2000 + 2100

CEN. SEC. 21

1" = 200'

T-5112