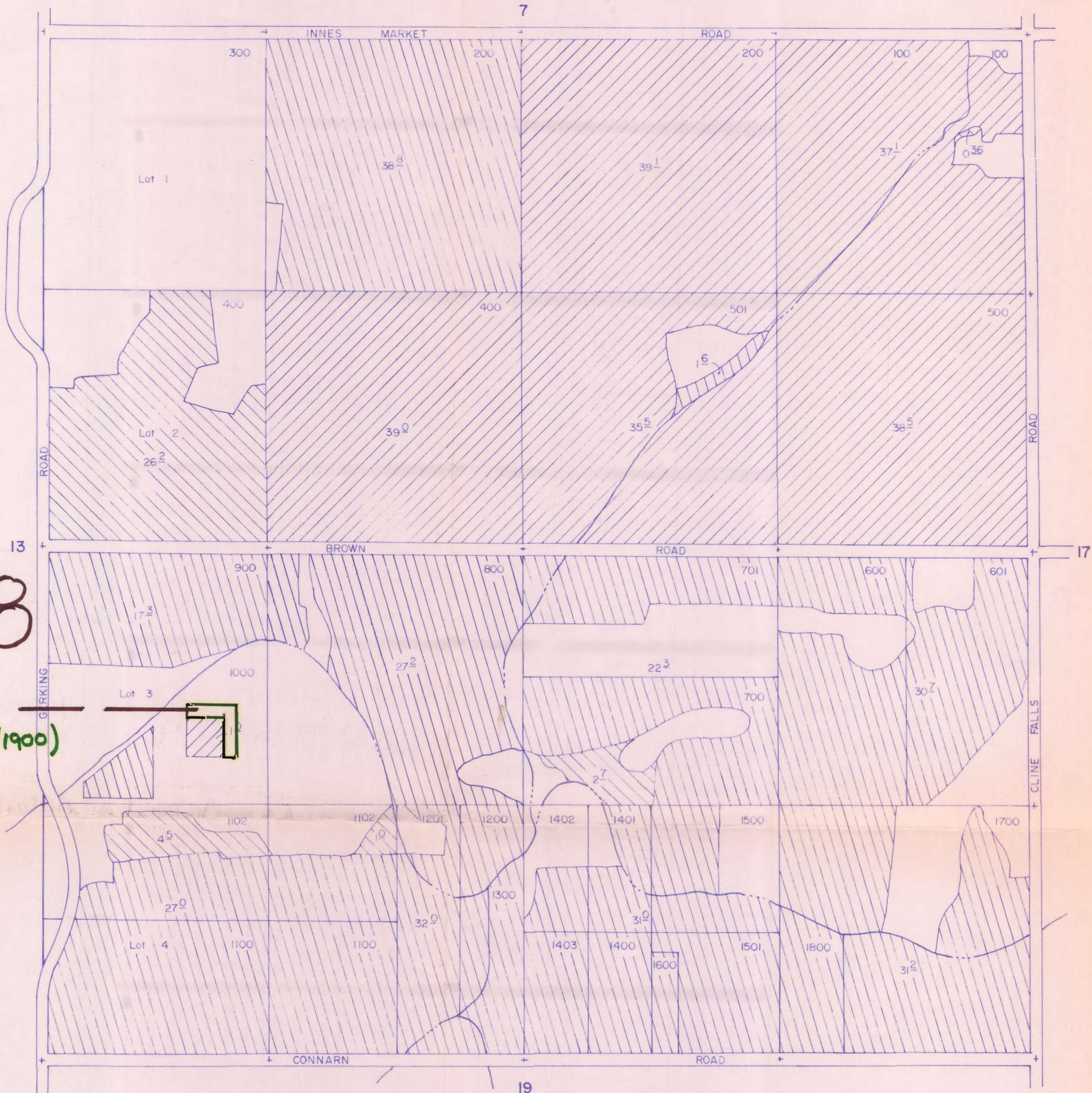


SECTION 18 T.16S. R.12E. W.M.

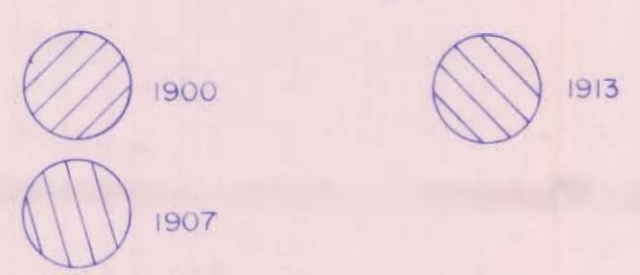
1" = 400'

T-5119



6-12-18

.7 ON
(c.26508, 9/1900)



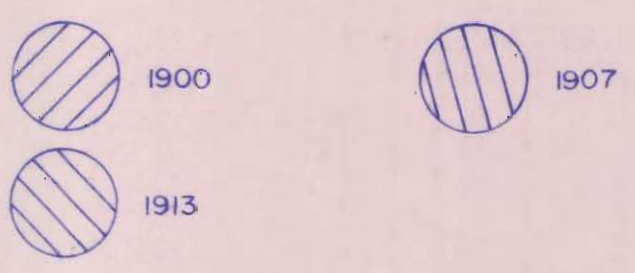
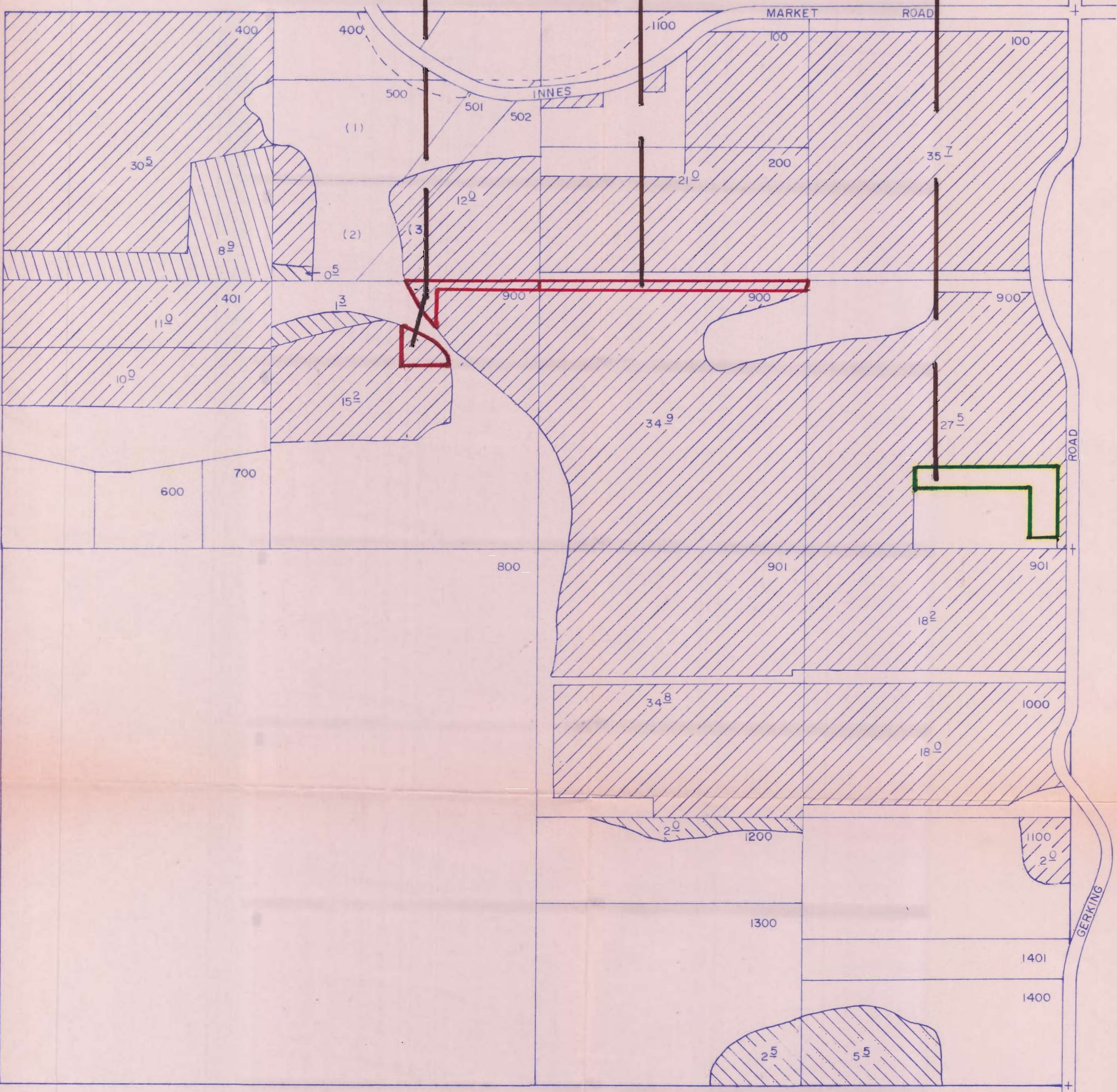
REC...
SEP 21 1962
WATER RESOURCES DEPT.
SALEM, OREGON

1.5 OFF (c. 26508)

16-11-13

1.2 OFF (c. 26508)

2.0 ON (c. 26508, 9/1900)



RECEIVED
 SEP 2 1982
 WATER RESOURCES DEPT.
 SALEM, OREGON

Revised from T-4935